

EAGLE ROCK COMMUNITY - WAKE CO., NC

EXTRACT FROM: WAKE TREASURES Vol 20 No 2 SUMMER/FALL
2010 - BY RPU 4 APR 2011 - BRANSON'S N.C. BUSINESS
DIRECTORY - 1884 - WAKE CO., NC SECTION

FARMERS:

△ APEX - J. R. U [JOHN RICE U, I]

△ W. B. U

△ BANKS - →

GREEN LEVEL -

△ G. A. U

△ HAYES STORE -

△ D. L. U

△ O. J. U

MORRISVILLE -

△ J. R. U [JOHN RICE U, I]

△ W. B. U

△ GILBERT U

△ JACK U [JOHN RICE U, I]

△ BARTLETT U

RALEIGH

△ B. P. WILLIAMSON

△ G. T. COOKE

△ W. G. U

△ B. J. U BRYANT SMITH

△ ROGERS STORE

△ BUCKNER RAY

FARMERS - Banks

△ BANKS, T. L.

△ BUNTING, J. N.

△ MYATT, W.

△ STEPHENSON, H. A.

△ PENNEY, J. J.

△ YOUNG, J. J.

△ STEPHENSON, L. D.

△ STEPHENSON, Matthew

△ GOWER, James

△ BANKS, Geo.

△ TURNER, Wm.

△ CROWDER, Thos. A.

△ CROWDER, W. D.

△ RAND, Wm. H.

△ RAND, John

△ JEWELL, Manless

△ PARTIN, Geo.

△ PARTIN, Marion

△ RHODES, James A.

△ UTLEY, Samuel

△ HARRIS, Aaron

△ JONES, W. J.

△ JONES, Miss Penny

△ RAND, Oscar

△ EAGLE ROCK

△ T. H. AVERA

△ W. P. CHURCH SMITH

○ Zebulon Record THUR 20 APR 1995 Zebulon, NC

Future auto sales lot has a history

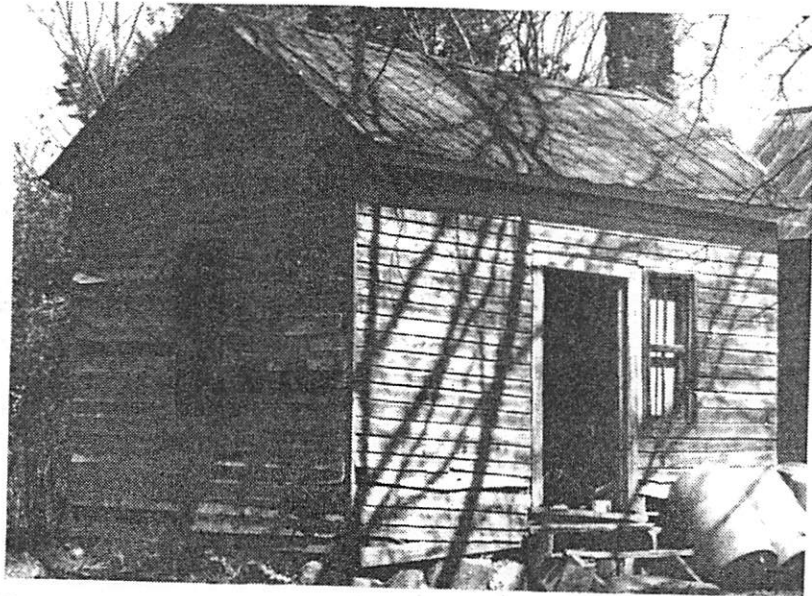
By ANDREW SAUR

Gold Leaf Farmer Staff Writer

The George Scarborough farmhouse, once the site of the now-defunct Eagle Rock post office, had been home to four generations of the Wendell family, but the house that stood for 150 years and was still owned by the family has given way to progress.

At the southeast intersection of U.S. 64 and U.S. 64 Business, three miles west of Wendell, the Scarborough house was recently torn down to make way for the Gill Buick dealership that's moving there from Zebulon.

One of George Scarborough's descendants, Knightdale's Mary Pair, lives a short distance from the home.



Farm additions

Contributed photos

Over a century, a kitchen, a smokehouse (above) and a dairy were among the additions to the Scarboro farm.

I. George Scarborough

A. Eli Scarborough

1. Mary Candace Scarborough & 1961

Md () - - -

a. - - - ♀ Md () - - Pair

b. - - - ♀

c. - - - ♂

1) A granddaughters = Candace - - Md () - - Tongue

Eagle Rock, Wake Co, NC 41
Wendell, Wake Co, NC

"It was my home. I have many memories of it," Mrs. Pair said. "It was a gathering place for the family."

The house was probably built in the 1840s or 1850s, according to a survey done by Kelly Lally, a Wake County planner.

The farm included "a two-story farmhouse, an outstanding ensemble of 19th-century domestic buildings and numerous barns," Ms. Lally wrote in "The Historic Architecture of Wake County," a book detailing her survey of about 2,000 Wake County buildings.

George Scarborough, a shoemaker, bought 290 acres between Marks Creek and Buffalo Creek in 1837 and later built the Greek Revival-style house on the land.

"The Scarboroughs were devout Missionary Baptists and members of the local Hephzibah Church. Scarborough was active in the Eagle Rock Masonic Lodge from the 1840s to his death in



The way it used to look

These old barns have given way to an approaching auto dealership.

1892," the survey states. He ran the post office from his home from 1874 to 1878 and was a justice of the peace, the survey said.

Eli Scarborough inherited the farm when his father died. He ran the post office from 1886 to 1914. He farmed tobacco, preached and taught Sunday School at Hephzibah and was the director of the Bank of Wendell, according to the survey.

Eli Scarborough was also a prominent politician, representing Wake County in the state House of Representatives from 1909 to 1911 then joining the county commissioners from 1911 to 1923. One of his grandchildren, Candace Tongue, followed his political lead and was the mayor of Wendell from 1979-1988.

When Eli Scarborough died, he passed the home to his only daughter, Mary Candace Scarborough, who left it to her three children when she died in 1961.

Mrs. Pair, one of the owners, moved from the house in 1956 when she got married, and for the last 25 years she and her sister in Raleigh and brother in Kansas City have rented the home.

Despite the years of wear, the house was still in good decent condition. "It was not bad. It was not in the best of shape, but it was

still home," Mrs. Pair said last week.

The home was significant to the family, Mrs. Pair said, but it was no longer practical to keep it.

"The three of us owned it, but not any of us were going to go back there to live," she added. And although George Scarborough's great-grandchildren would have liked to see the home preserved, Mrs. Pair admits the price she received from the Leith automobile dealership would have been tough to match.

Because of its historical and architectural significance, the property was on the National Register's study list, said Ms. Lally, who oversees the Wake Coun-

ty Historic Preservation Commission.

"It was definitely a worthy place," she said. Beginning with the three-year survey, Wake County has been working to preserve some of its significant properties for about six years.

Despite the loss of the Scarborough farm, Ms. Lally said the county has done well catching up with other areas that have been working on preservation for a longer time. The historic preservation commission began in 1992 and is the county's official body to identify, preserve and protect historical areas.

"The commission has done terrific things since they started,"

Ms. Lally said. The group of 11 county residents, including George Pleasants who represents eastern Wake, has successfully recommended six properties outside the Raleigh city limits designated as historic landmarks. Another seven sites within Raleigh have been successfully recommended.

County officials including Ms. Lally are also giving educational presentations to Wake County towns about the historic commission. The group has visited Knightdale and Wendell, and will visit Zebulon in May. For more information on the Wake County Historic Preservation Commission, call Ms. Lally at 856-6322.