

MAPS - WC, NC - KNIGHTDALE AREA

○ EASTERN WAKE CO, NC - 1870 FENDOL BEAVERS MAP
 A HELP IN LOCATING LAND HELD BY JOHN W. SMITH AT
 HIS DEATH SEP 1860. SOME TO NEPHEW U PCHURCH SMITH
 LISTEN BELOW ARE SITES ON THIS MAP THAT MATCH CITATIONS
 IN THE ESTATE PAPERS FOR JOHN W. SMITH - TO WC, NC - MAPS
 KNIGHTDALE AREA



- △ 1 IS ONE TARBOROUGH RD I BELIEVE 2 IS THE TARBOROUGH RD IN THE ESTATE -
 - △ 3 MARKS CREEK
 - △ 4 POPLAR CREEK (BRANCH)
 - △ 5 ROGERS X RDS (WAKE X RDS)
 - △ 6 K. UPCHURCH [KEARNEY U.]
 - △ 7 A.T. MEAL [ALONZO THOMAS MEAL]
 - △ 8 R.B. DUNN [RUFUS G DUNN]
 - △ 9 DR. J.B. DUNN [DR. JAMES B DUNN]
 - △ 10 T.R. DEBNAM [THOMAS RICHARD DEBNAM]
 - △ 11 a & b BURWELL TEMPLE; 12 S. BROWN [SOLOMON BROWN]
 - △ 13 N. PRICE = NEEDHAM PRICE; 14 S. PALE [SOLOMON PACE]
 - △ 15 HINTON RD (SEVERAL HINTONS IN ESTATE) [HIS DAU MO A SON OF KEARNEY U]
 - △ 16 BEAVER DAM CREEK; 17 H.A. HODGE / HENDERSON HODGE;
 - △ 18 G.W.S. [POSSIBLY GEO. W. SCARBOROUGH]; 18 SEWELL HOUSE [DR. HENRY S.]
 - △ 19 J. SMITH MILL [JOHN W. SMITH - NO MILL IN ESTATE] 20 G.A.U. = GILLIUM A.U.
- X. THE BEAVER DAM PROPERTY OF JOHN W. SMITH (MAP I)
 Y. THE LONG BRANCH PROPERTY OF JOHN W. SMITH (MAP II)
 Z. THE TOWER OF THE WIDOW OF JOHN W. SMITH (SEE NOTE ON MAP II)

WAKE CO, NC - MAPS - KNIGHTDALE AREA - LAND OF JOHN W SMITH

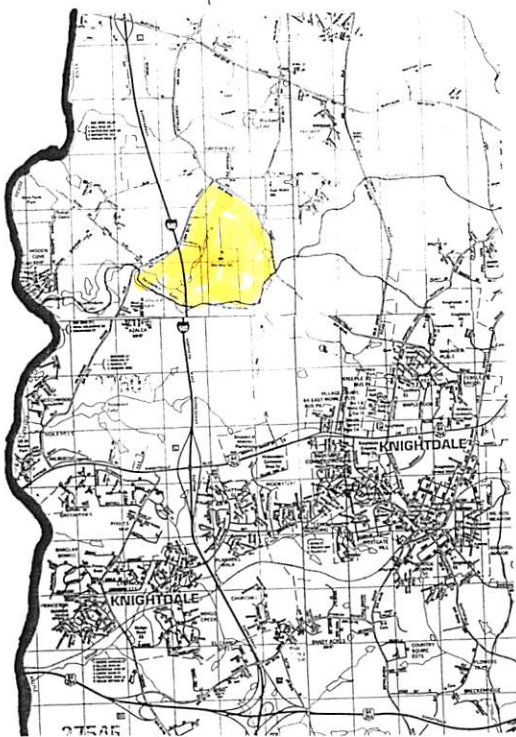
Location of the land of John W. Smith at the time of his death SEP 1860 - Wake Co, NC

X = WAKE CROSS ROADS

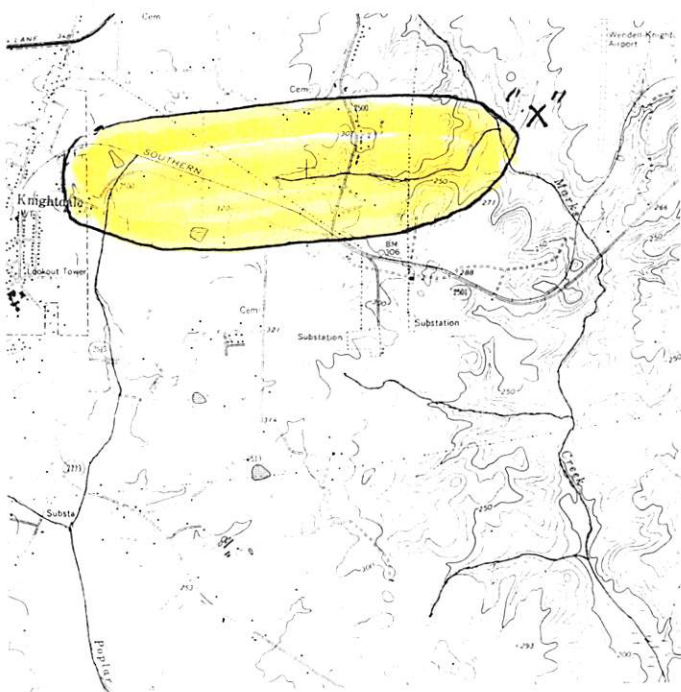
NOTE THAT THE WIDOWS DOWER (756 ACRES) LIES TO N, S, & E OF THE MOUTH OF LONG CREEK "X"

NOTE: FOR LARGER MAPS ANNOTATED SEE FILE: WAKE CO, NC - MAPS KNIGHTDALE AREA

LOCATION OF MAP I PROPERTY



MAP II PROPERTY - LIES ON LONG CREEK WHICH FLOWS EAST INTO MARKS CRK & EXTENDS WEST TO POPLAR CRK (OR LONG CRK COULD BE NEXT ONE SOUTH)



MAP I OF ALLOCATION OF LAND OF JOHN W. SMITH d SEP 1860 (WAKE CO, NC) BY COMMISSIONERS 11 FEB 1863 - SEE PG 77 B/D/F/J/L OF JOHN W. SMITH 7 MAY 2009.

TWO TRACTS:

- #1 ALFRED TRACT - 596 3/4 A
- #2 BEAVERDAM TR 335 A

TO UPCHURCH SMITH

- ALFRED TRACT TO HEIR OF DEC'D SON ELAM SMITH:
- D. 75.00 A SARAH (SMITH) STEPHENS
- E. 130.25 A FRANKLIN SMITH
- F. 129.50 A MARY (SMITH) WOOD
- G. 130.00 A ELEM SMITH (ELAM)
- H. 135.25 A JOHN STEPHENS

598.00 A VS 596 3/4 A?

TOTAL MAP I DISPOSITION:

- 596 3/4
- 335
- 598

1524.75 A

HENDERSON WOOD HUSB OF MARY (POLY)

CHARLES STEPHENS HUSB OF SARAH "JANE"

COMMISSIONERS:

- N. Price, seal
- Thos. R. Debraum, seal
- Geo. W. Scarborough, seal
- David Hinton, seal

SWAYCOR: F. DEAVERS & S. CHAS. BEAVERS

- J. S. LASTER
- JOSIAH HORTON

TOTAL ESTATE LAND DISPOSITIONS:

MAP I 1524.75 A

MAP II 1920.25 A

WIDOW RIVER TRACT 756.00 A

55.00 A

4,261.00 A

TO MARY (SMITH) (NOT PLATTED) WOOD

ON NEUSE RIVER

NEARBY UPCHURCH

55 ACRES MAP I?

ON NEUSE RIVER

H.A. HOPKINS LINE

ALFRED TRACT

BEAVERDAM TRACT

MAP II OF ALLOCATION OF LAND OF JOHN W. SMITH d SEP 1860 (WAKE CO, NC) BY COMMISSIONERS 11 FEB 1863 - SEE PG 77 B/D/F/J/L OF JWS 7 MAY 2009.

DISPOSITIONS:

#1 UPCHURCH SMITH 21 1/4 A

#2 SEARLY TO: 605 3/4 A

JOHN WOODARD

JAMES WOODARD

#4

A. 188 1/4 A ERVIN GREEN

B. 120 A DETST (GREEN) HOLLEMAN

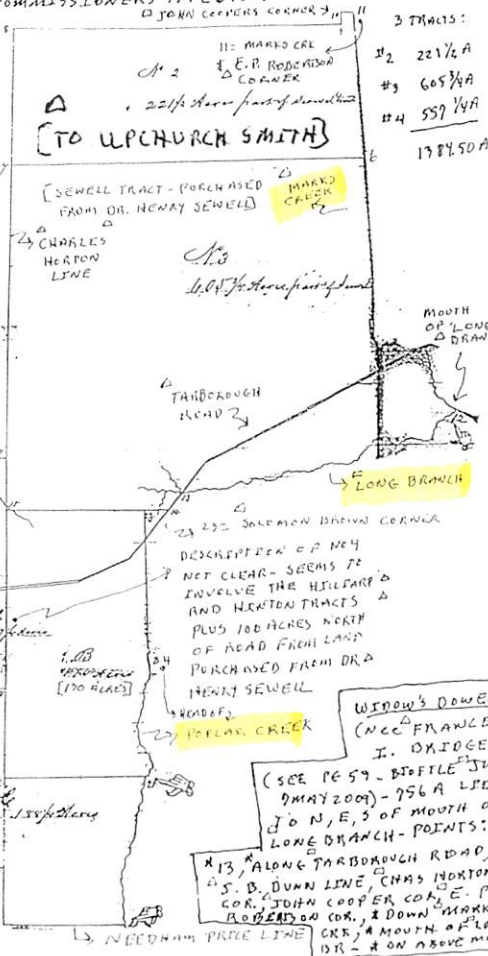
C. 188 1/4 A JOHN GREEN

546.50

VS 597.25 A?

TOTAL MAP II DISPOSITION:

21 1/4 + 605 3/4 + 546.50 = 1920.25 A

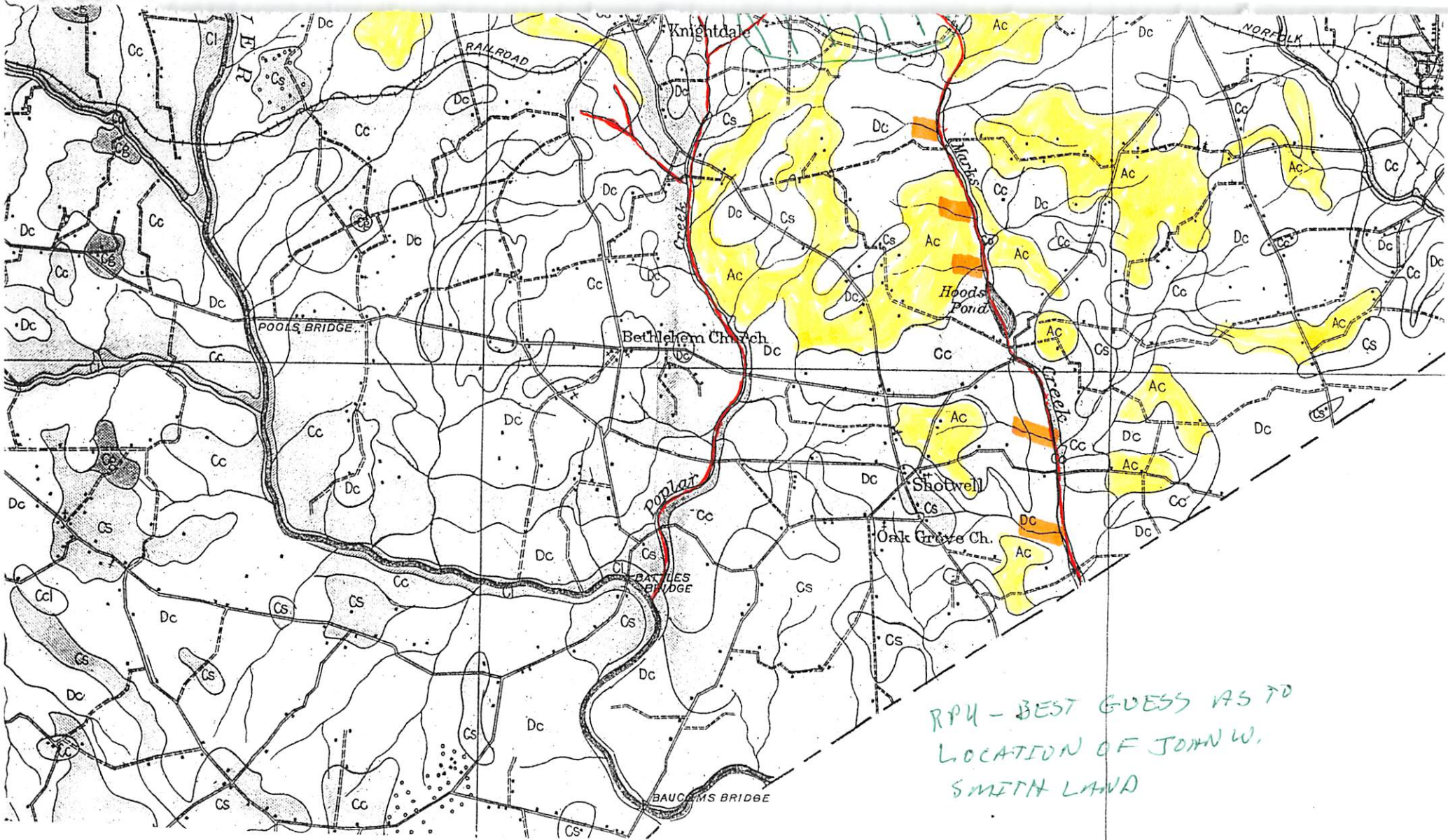


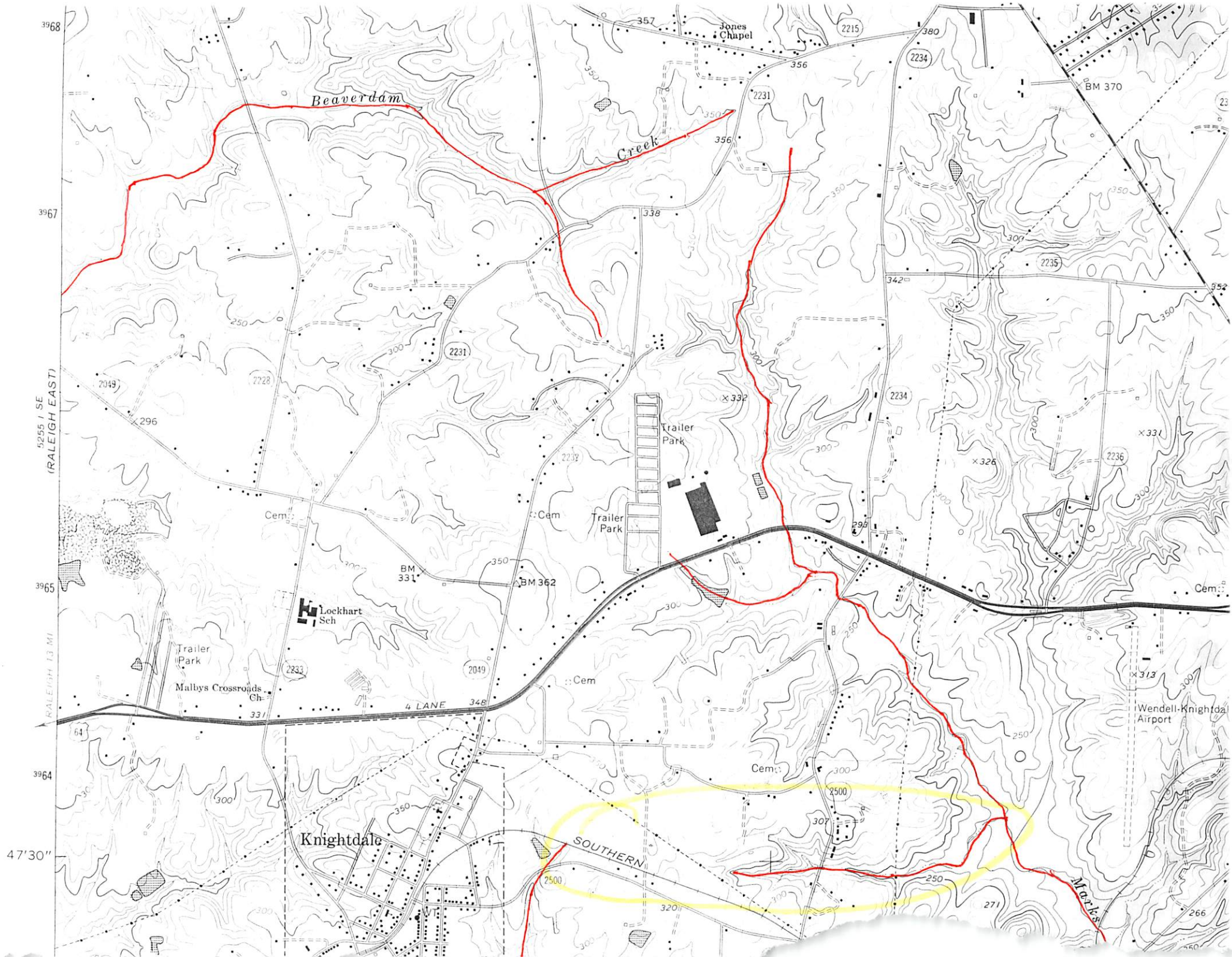
WIDOW'S DOWER (MCC FRANCES I. OXIGEE) (SEE PG 59 - B/D/F/J/L 7 MAY 2009) - 756 A LIES TO N, E, S OF MOUTH OF LONG BRANCH - POINTS:

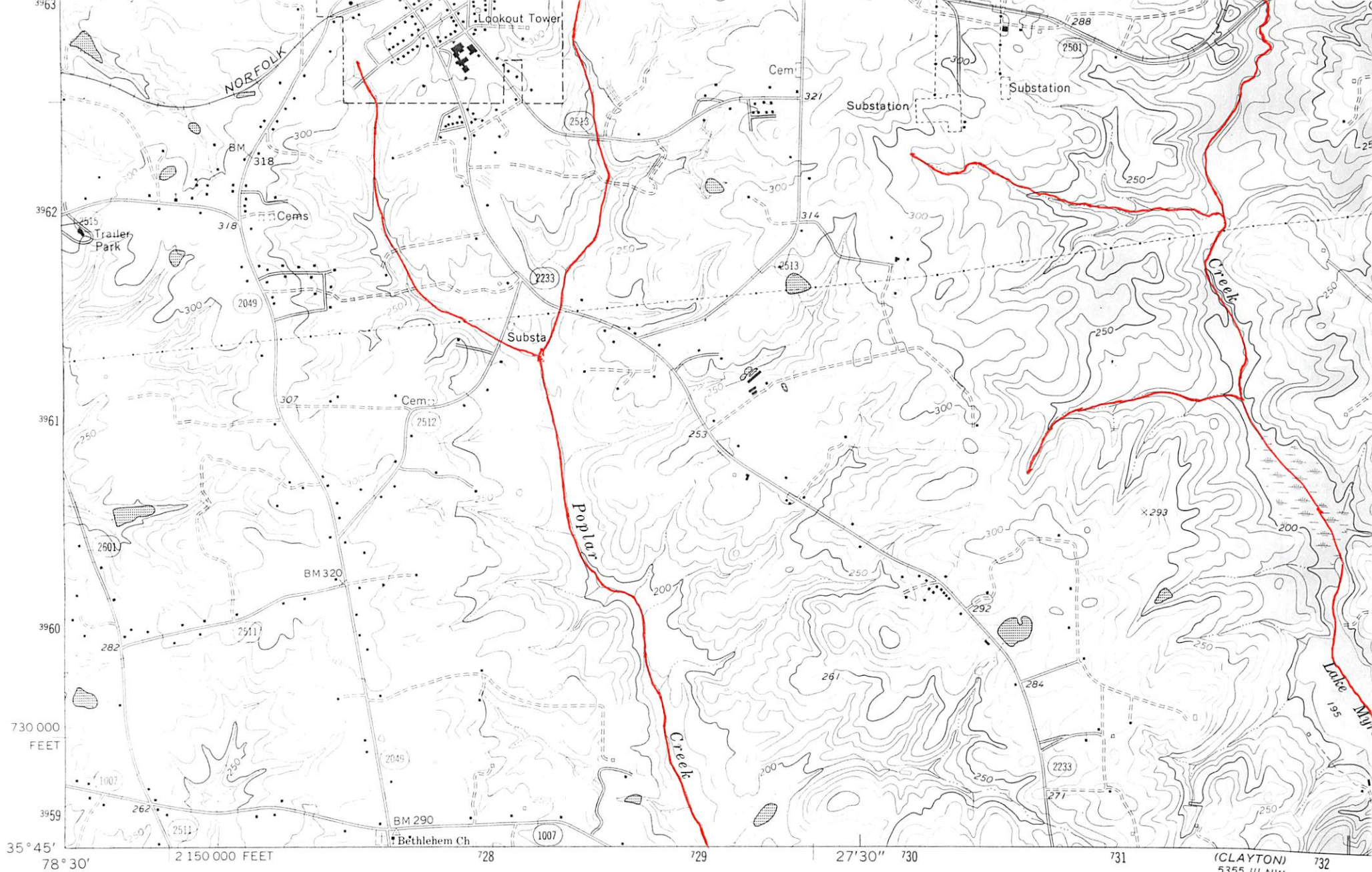
- #13 ALONG TARBOROUGH ROAD,
- #5 B. DUAN LINE (CHAS HORTON COR, JOHN COOPER COR, E. P. BOWEN COR, I DOWN MARKS CRK, A MOUTH OF LONG CR - A ON ABOVE MAP

○ EASTERN WAKE CO, NC CIRCA 1914 SOILS MAP - A HELP IN LOCATING
LAND HELD BY JOHN W. SMITH AT HIS DEATH SEP 1860 - SOME TO HIS
NEPHEW UPCHURCH SMITH







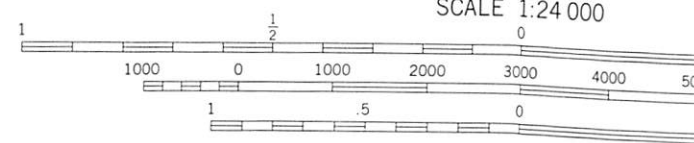
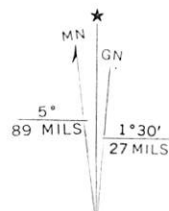


Mapped, edited, and published by the Geological Survey

Control by USGS, USC&GS, and North Carolina Geodetic Survey

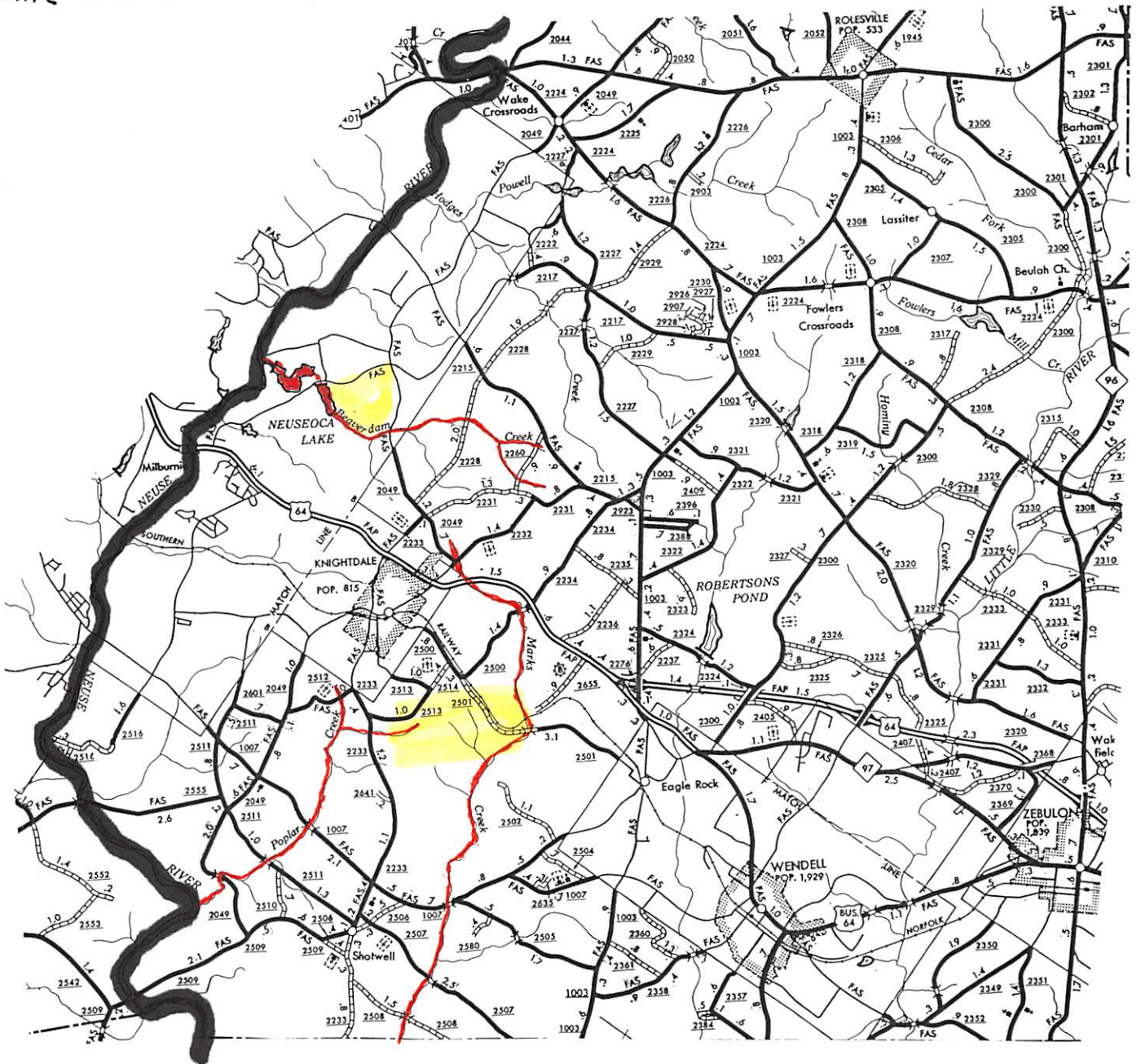
Topography by photogrammetric methods from aerial photographs taken 1964. Field checked 1967

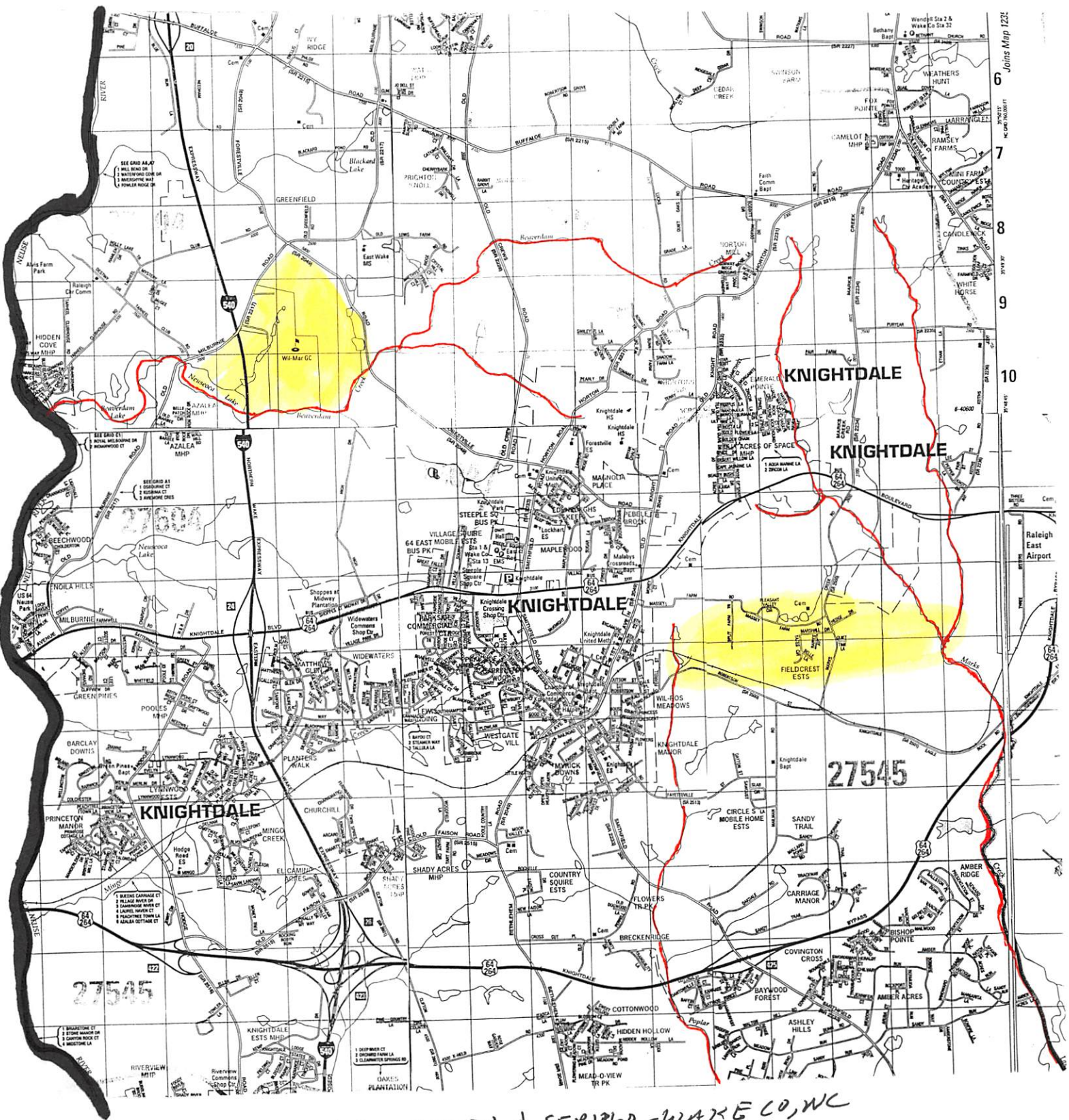
Polyconic projection. 1927 North American datum
 10,000-foot grid based on North Carolina coordinate system
 1000-metre Universal Transverse Mercator grid ticks, zone 17, shown in blue



CONTOUR INTERVAL 10 FEET
 NATIONAL GEODETIC VERTICAL DATUM OF

○ EASTERN WAKE CO, NC - A HELP IN LOCATING LAND HELD BY JOHN W. SMITH AT HIS DEATH SEP 1860 - SOME WENT TO HIS NEPHEW UPENBORCH SMITH





RE LAND OF JOHN W. SMITH d SEP 1860 - WAKE CO, NC