



SILVER LAKE  
SCTWP, WC, NC

Fun's on tap at Silver Lake where, if the water doesn't do it for Kaylee Rudkin, 8½, doll 'Mimi,' age 30+ (a yard sale find) w  
 REC'D FROM PATRICIA SILVERS 19 DEC 2017 - RM4 [NEE PATRICIA ANDERSON] (w/o MAX BENTON SILVERS)  
 STAFF PHOTOS BY MEL NATHANSON

# Solid gold memories grow at Silver Lake

BY CAROL FREY  
STAFF WRITER

**RALEIGH** — Without glitzy billboards, teenagers have been finding Silver Lake for half a century.

The little lake on 26 acres of Wake County countryside hasn't changed much during that time, but the teenagers have.

As they remember it — now that they're on Social Security — the kids of the 1940s would come to swim, to play Tarzan swinging

## A SUMMER WANDER



## SILVER LAKE

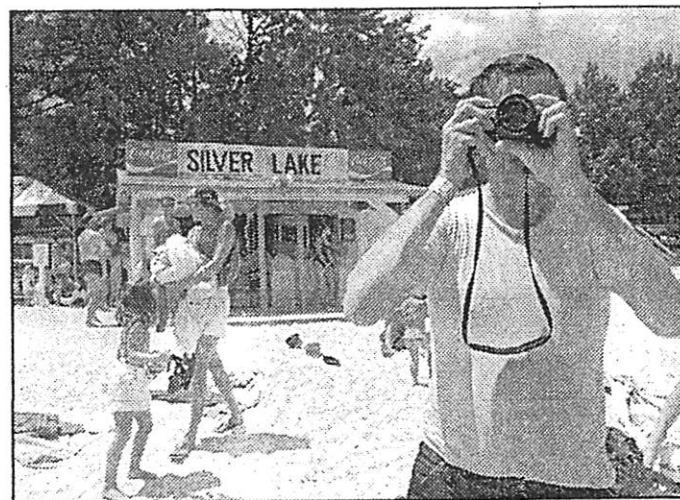
from a rope into the water or to drop a fishing line.

"It didn't take much to entertain kids back then," said Faye Silvers Hensley, 69, daughter of the man who built Silver Lake. "We just enjoyed being."

Today's teenagers come to tame The Beast.

A summer of riding The Beast, a five-story water slide, shows on lithe and tanned Heather Clarke, 16.

"Everyone says I should get a season pass," said Heather, fresh from a reverie alone on her beach towel. "I come out every day between 12 and 1. I go swimming when I feel like it and I slide when I feel like it."



Summers are framed by the time Pat Minerva's family spent at the Raleigh swimming hole; he captures his children or

SEE SILVER LAKE, PAGE 7B

# SILVER LAKE

CONTINUED FROM PAGE 1 B

Staying until 7 or 7:30 most days, she has perfected a technique for the fastest possible ride down the slide: Fold the foam mat and hold the front up slightly as you set it in the stream of water and make the descent on your belly.

It was the slide that brought 21-year-old Daniel Bowden back to Silver Lake three weeks ago after six years' hiatus.

"I came back purely for the memories," Bowden said, describing the four summers he spent at the lake before he turned 15 and his family moved to Knightdale.

"Riding the slide," he said. "It

had no rails then, so you could run down it, chasing each other. We'd come home with skinned knees, busted lips."

Since becoming a Silver Lake regular again, Bowden has discovered the park's new log roll attraction and mastered its springboard, one of the few diving boards still around that can dip low toward the water and sling-shot a diver into the air.

Not only can you do gainers and back flips on it, Bowden said, you can do a one-and-a-half flying squirrel — a bone-wrenching trick that involves gripping the legs before straightening out and splashing down.

"Most places have done away with the diving board because of liability," said John Gensinger, president of Recreation Management Corp., the current owner.

And because of economics.

To make a pool springboard safe, there has to be enough water so that divers won't hit the side or bottom, Gensinger said, and to pay for such a "monster pool" would require attracting big crowds — crowds too big to make diving safe.

Silver Lake accommodates 500 to 1,000 swimmers on weekdays, 1,000 to 2,000 on weekends, according to Gensinger, without crowding the diving area.

The cool spring water has been a magnet for youngsters almost from the day in 1940 that Thomas Lundy Silvers and his son Max built the dam. The idea was to create a better view from Silvers' front porch than the swamp originally there, and though the red Carolina mud made it the color of tomato soup at first, according to

grandson Ben Silvers, 58, the spring water content eventually won out.

"The neighborhood children would come, and Daddy put that platform in so they could dive in," said Faye Hensley, who was 14 when the dam was built.

Teenagers weren't looking for thrills. They got hot and wanted to get in the water to cool off for a couple of hours.

They amused themselves "running, playing tag, throwing water at each other, all kinds of dumb things," said Max Silvers, 81.

Lundy Silvers, who made a living for years dealing junk, realized he had a money-maker in Silver Lake.

"After a few years, he started charging 35 cents. . . . Practically everybody came to Silvers Lake," Hensley said.

Children of Ben Silvers' gener-

ation "played Tarzan, dove for imaginary crocodiles, fished, caught snakes." All three of his children learned to swim at Silver Lake — then run by Hensley, who took over after her father died.

"It was a wonderful place to grow up," said Kim Webster, 34. "We floated, played on the wooden slides, tossed a coin and tried to find it — a real challenge in a lake — played Marco Polo."

Two years before Webster's senior year in high school, Silver Lake was sold to Gensinger's corporation.

"When Aunt Faye got rid of the lake, I never went back," Webster said.

Not even The Beast tempts her, though she says wistfully, "I wish they'd had that when I was growing up."

SWIFT CREEK TWP - WAKE CO., NC

FROM BOOK: WAKE CAPITAL COUNTY OF N.C. - VOL II - RECONSTRUCTION  
 TO 1920 - K. TODD JOHNSON & ELIZABETH REID MURRAY - RPU 4 SEP 2011  
 2008 - PG 659

CROSSFILED

MAP FILES FOR COUNTIES

- △ OF WAKE, DURHAM,
- △ DURHAM, GRANVILLE,
- △ FRANKLIN, HARNETT,
- △ JOHNSTON

△ WAKE CO., NC - POST OFFICES

WAKE CO., NC TOWNSHIPS:

- △ WHITE OAK.
- △ SWIFT CREEK
- △ BARTONS CREEK

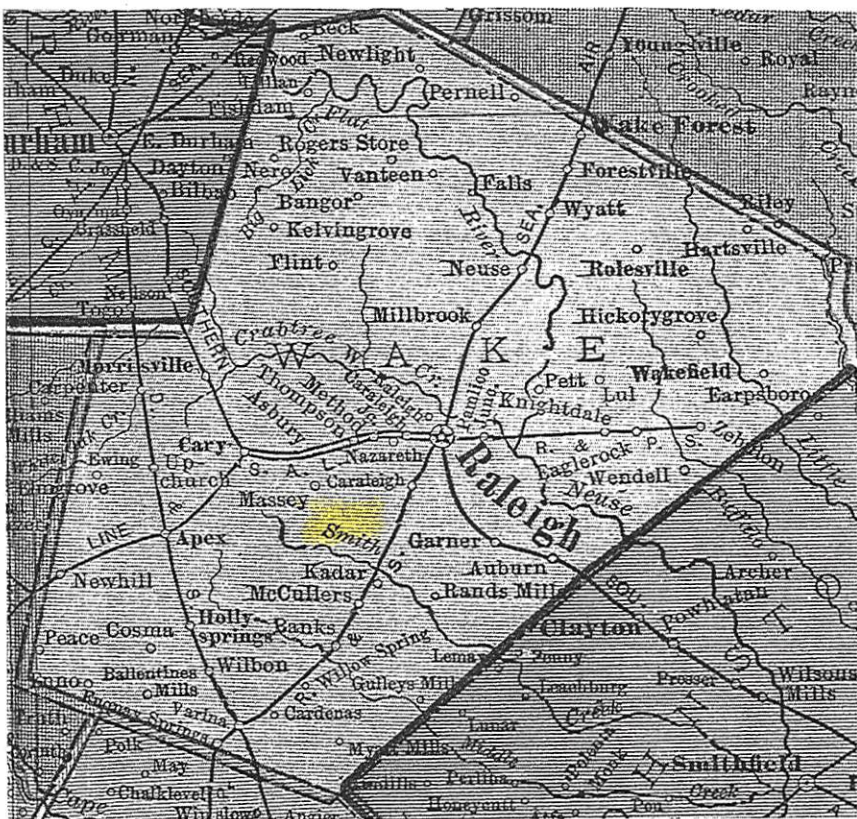
△ RAILROADS (NOTE - THE  
 LINES ARE FOR  
 RAILROADS, NOT ROADS)  
 - WAKE CO. NC

- D & S RAILROAD
- R & S RAILROAD
- S. A. L.

SOUTHERN  
 R & P. S.

LESSER KNOWN WAKE  
 CO., NC SITES: (N+S)

- △ BECK LILLIAN
- △ PERNELL ROGERS STORE
- △ VANTEEN BANGOR WYATT
- △ KELVINGROVE FLINT HARTSVILLE
- △ HICKORY GROVE PETT LUL
- △ EARPSBORD (J) EAGLE ROCK PARNELL JUNCTION
- △ THOMPSON LEWING UPCHURCH
- △ MASSEY CARALEIGH RANDE MILL
- △ KADAR MCCULLENS DANIKS
- △ PEACE COSMA GULLEYS MILL
- △ WILSON END BALLENTINE MILLS
- △ CARDENAS GULLEYS MILL



1907 Wake County post offices shown on North Carolina map, published by Rand, McNally & Co., issued by N.C. State Board of Agriculture. Map from Elizabeth Reid Murray Collection.

NOTE THAT SWIFT CREEK IS MISLABELED  
 SMITH CREEK - RPU

NOTE THAT CARALEIGH IS LISTEN  
 TWICE - THE ONE WEST OF RALEIGH  
 SEEMS TO BE CARALEIGH JUNCTION  
 - MAYBE NOT A P.O. BUT WHERE  
 R & S RAILROAD INTERSECTED  
 S. A. L. RAILROAD - RPU

CC TO WAKE CO  
 MILL FILES  
 TO STREAM FILES:  
 △ BIG LICK

BANKS, WAKE CO., NC - PO

EXTRACT FROM: WAKE TREASURES Vol 20 No 2 SUMMER/FALL  
2010 - BY RPA 4 APR 2011 - BRANSON'S N.C. BUSINESS  
DIRECTOR) - 1884 - WAKE CO., NC SECTION

△ POST OFFICES

Apex  
Auburn  
Ballentine's  
△ Banks  
Beck  
Cary  
Dayton  
Eagle Rock  
Enno

Forestville  
Garner's Station  
△ Green Level  
Gulley's Mill  
Hartsville  
Hickory Grove  
Hollands  
Holly Springs  
Hutchinson's Store

Kelvin Grove  
Lemay  
Moore's Mills  
Morrisville  
Myatt's Mills  
Neuse  
New Hill  
New Light  
Raleigh (C. H.)

△ Rogers' Store  
Rolesville  
Shotwell  
Varina  
Wakefield  
Wake Forest College

BANKS, WAKE CO., NC

EXTRACT FROM: WAKE TREASURES Vol 20 No 2 SUMMER/FALL  
2010 - BY RPH 4 APR 2011 - BRANSON'S N.C. BUSINESS  
DIRECTORIAL - 1884 - WAKE CO. NC SECTION

BUSINESS VENTURES:

- MANUFACTORIES - RALEIGH
- CARRIAGES AND WAGONS - 119 E. HARGETT ST. ALFRED U.
- MERCHANTS AND TRADESMEN - BY LAST NAME

RALEIGH:

- UPCHURCH, Alfred - Buggies and Coaches
- UPCHURCH, W. W. - 208 Fayetteville street - Broker
- UPCHURCH & BRIE - 143 Hargett st. - Conf.
- UPCHURCH, Addie S. - 214 s. Blounth street - Dressmaker
- UPCHURCH, Mrs. M. E. - 121 n. Wilmington st. - Dressmaker
- UPCHURCH, W. C. - 15 e. Hargett st. - Ret. Gro.
- UPCHURCH, John W. - 14 Exchange Place and 13 e. Martin st. - Agt., Ret. Gro., Oysters, Fish, etc.
- UPCHURCH, John R. - Retail Dealer
- WILLIAMSON & UPCHURCH - 216 Fayetteville st. - Com. Mchts. and Who. Gro.

RPH NOTE 10 APR 2011  
 ASSUME UPCHURCH  
 = WM GEO. U BUT  
 NOT SURE. NO  
 BRIE FAMILY  
 ENTRIES IN RPH  
 BIOFILE SYSTEM

APEX: A. N. BETTS - GENERAL STORE

BANKS: B. STEVENSON - GENERAL STORE

MILLS

EAGLE ROCK: T. H. AVERA - CORN & FLOWER

RALEIGH: W. G. U. - FLOUR & CORN

P. YATES - FLOUR, CORN, & SAW

J. F. CURFMAN - STEAM SAW (SW of RALEIGH)

BANKS COMMUNITY, WAKE CO., NC

EXTRACT FROM: WAKE TREASURES Vol 20 No 2 SUMMER/FALL  
2010 - BY RPA 4 APR 2011 - BRANSON'S N.C. BUSINESS  
DIRECTORRY - 1884 - WAKE CO., NC SECTION

FARMERS;

△ APEX - J. R. U [JOHN RICE U, I] △  
△ W. B. U

△ BANKS - →

GREEN LEVEL -

△ G. A. U

△ HAYES STORE -

△ D. L. U

△ O. J. U

MORRISVILLE -

△ J. R. U [JOHN RICE U, I]

△ W. B. U

△ GILBERT U

△ JACK U [JOHN RICE U, I]

△ BARTLETT U

RALEIGH

△ B. P. WILLIAMSON

△ G. T. COOKE

△ W. G. U

△ B. J. U BRYANT SMITH

△ ROGERS STORE

△ BUCKNER RAY

FARMERS - Banks  
BANKS, T. L.  
BUNTING, J. N.  
MYATT, W.  
STEPHENSON, H. A.  
PENNEY, J. J.  
YOUNG, J. J.  
STEPHENSON, L. D.  
STEPHENSON, Matthew  
GOWER, James  
BANKS, Geo.  
TURNER, Wm.  
CROWDER, Thos. A.  
CROWDER, W. D.  
RAND, Wm. H.  
RAND, John  
JEWELL, Manless  
PARTIN, Geo.  
PARTIN, Marion  
RHODES, James A.  
UTLEY, Samuel  
HARRIS, Aaron  
JONES, W. J.  
JONES, Miss Penny  
RAND, Oscar

△ EAGLE ROCK

△ T. H. AVENA

△ WPCURCH SMITH

SWIFT CREEK TWP - W.C., NC

EXTRACT FROM: WAKE TREASURES Vol 20 No 2 SUMMER/FALL  
2010 - BY RPA 4 APR 2011 - BRANSON'S N.C. BUSINESS  
DIRECTOR) - 1884 - WAKE CO, NC SECTION

TOWNSHIPS AND MAGISTRATES

△ **Barton's Creek -**  
M. H. ELLEN  
R. D. HONEYCUTT  
R. M. JONES  
J. D. ALLEN  
Dudley PEED  
Constable - J. R. NIPPER

△ **Buckhorn -**  
L. B. SEAGRAVES  
G. B. ALFORD  
W. H. BURT  
D. B. HOLLAND  
J. C. BALLENTINE  
B. B. FREEMAN

△ **Cary -**  
J. P. H. ADAMS  
C. H. CLARK  
P. A. SORRELL  
A. G. JONES  
H. B. JORDAN  
J. Q. WILLIAMS  
Constable - Kinion JONES

△ **Cedar Fork -**  
W. M. ARNOLD  
J. M. PUGH  
J. R. GIBSON  
A. S. POLLARD  
W. R. SMITH  
A. D. POLLARD  
A. M. ADAMS  
Constable - W. H. BEASLEY

△ **House's Creek -**  
J. D. HAYES  
Robert M. HORTON  
J. W. WIGGINS  
W. H. WHITAKER  
J. N. HUBBARD  
Constable - Daniel JACKSON

△ **Little River -**  
P. P. PACE  
E. T. JONES  
I. M. PROCTOR  
B. F. STRICKLAND  
Constable - M. W. PERRY

△ **Wake Forest -**  
W. C. BREWER  
E. E. GILL  
H. T. JONES  
H. WATKINS  
W. W. DICKSON  
S. W. TERRELL  
G. S. PATTERSON  
A. C. DUNN  
J. M. FLEMING  
Constable - Geo. TERRELL

△ **Mark's Creek -**  
H. A. RHODES  
Joseph BLAKE  
John W. SMITH  
W. H. HOOD  
J. A. RICHARDSON  
Constable - W. H. NOWELL

△ **Middle Creek -**  
D. C. ADAMS  
J. M. JONES  
J. D. BALLENTINE  
J. L. JOHNSON  
J. A. ADAMS  
Constable - M. G. UTLEY

△ **Neuse River -**  
John J. DUNN  
L. M. GREEN  
R. W. JEFFREYS  
J. T. HUNTER  
F. J. HOLLOWAY  
Constable - S. R. JEFFREYS

△ **New Light -**  
H. C. RAY  
J. P. BECK  
B. F. LAWRENCE  
W. H. LASSITER  
A. L. LYMAN  
Constable - David A. RAY

△ **Oak Grove -**  
W. H. GULLEY  
Jno. W. FERRELL  
J. M. LYON  
Geo. W. PERRY  
J. H. PENNY  
Constable - S. B. FERRELL

△ **Panther Branch -**  
J. ADAMS  
S. D. WILLIAMS  
J. W. JONES  
J. W. MYATT  
G. P. PARTIN  
Constable - John B. GODWIN

△ **White Oak -**  
A. C. COUNCIL  
M. A. JONES  
J. J. ROGERS  
A. B. FREEMAN  
Jno. WILLIAMS  
R. BARBEE  
Constable - William JINKS

△ **Raleigh -**  
Z. T. BROUGHTON  
C. B. ROOT  
M. B. BARBEE  
R. G. DUNN  
W. D. HAYWOOD  
J. C. S. LUMSDEN  
J. D. PULLEN  
J. C. MARCOM  
Len. H. ADAMS  
David A. WICKER  
Wm. H. DODD  
J. A. HAYWOOD  
J. M. HARRIS  
G. ROSENTHAL  
S. M. PARRISH  
A. H. TEMPLE  
D. Reid UPCHURCH  
Wesley WHITAKER  
W. E. ANDERSON  
P. C. FLEMING  
J. F. TAYLOR  
Constable - Thomas MANLY

△ **St. Mary's -**  
C. N. ALLEN  
J. G. ANDREWS  
J. T. BROUGHTON  
W. R. POOLE  
T. J. JOHNS

△ **St. Matthew's -**  
N. W. POOLE  
J. D. TEMPLE  
A. R. HODGE  
R. J. BUFFALO  
Cicero WILLIAMS  
Chas. L. HINTON  
Constable - J. W. UPCHURCH

△ **Swift Creek -**  
L. D. STEPHENSON  
J. P. MASSEY  
J. Z. BENNETT  
E. M. BLEDSOE  
M. T. JONES  
A. BETTS  
Constable - Rufus L. POWELL

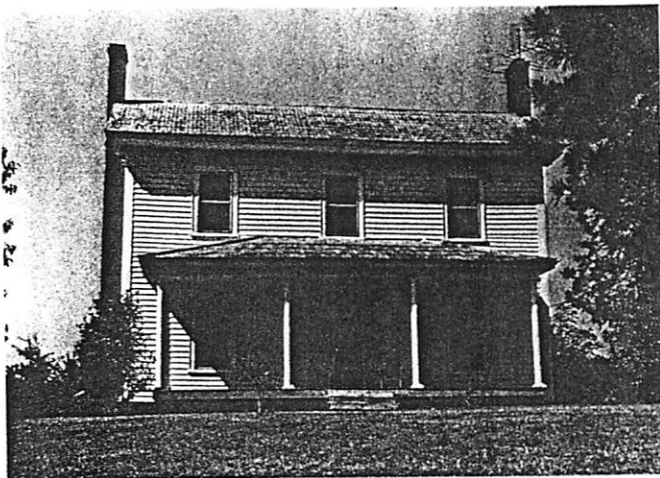




The dwelling was apparently built for David and Sarah McCullers Stephenson to replace an earlier home. The 1850 census shows their son, twenty-four-year-old Matthew Stephenson, in charge of the plantation of over 2,000 acres, producing fairly large quantities of corn, cotton, sweet potatoes, wheat, and oats on some 200 acres of cleared land. He also had large numbers of swine, sheep, cattle, horses, and mules. There were twenty-six slaves living in three slave dwellings on the Stephenson plantation in 1860. Matthew Stephenson never married, so the property passed to his brother, Leonidas, whose descendants owned it into the twentieth century. (SL)

### John B. Strain House

[WA 1236] S.R. 1375, *McCullers Crossroads vicinity*



*John B. Strain House*

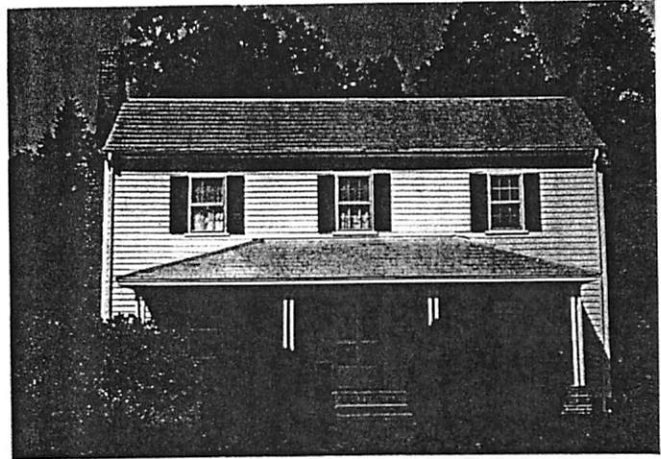
An excellent and well-preserved example of the unpretentious two-story farmhouses of the mid-nineteenth century, the John Strain House features late Greek Revival details, such as a low-pitched side-gable roof, six-over-six sash windows, two-panel doors, gable returns, and plain wide cornerboards. The exterior end brick chimneys are laid in common bond. A rear ell contains the dwelling's kitchen and dining area. The hip-roofed porches on the main block and rear ell are supported with thin Doric columns. Outbuildings associated with the property include a smokehouse, an early well, and two tobacco barns. The house faces the road at an odd angle, reflecting the former route of the old Atkins Road, as shown on the 1871 Bevers Map of Wake County.

John B. Strain and wife Nancy ("Nannie") Jones had two daughters, Dora and Martha, born around 1862 and 1865. From 1865 to 1868 Strain was postmaster of the short-lived Middle Creek post office. The 1880 census shows that their farm consisted of some 200 acres, 60 of which were tilled, which yielded cotton and corn, plus small amounts of oats, wheat, sweet pota-

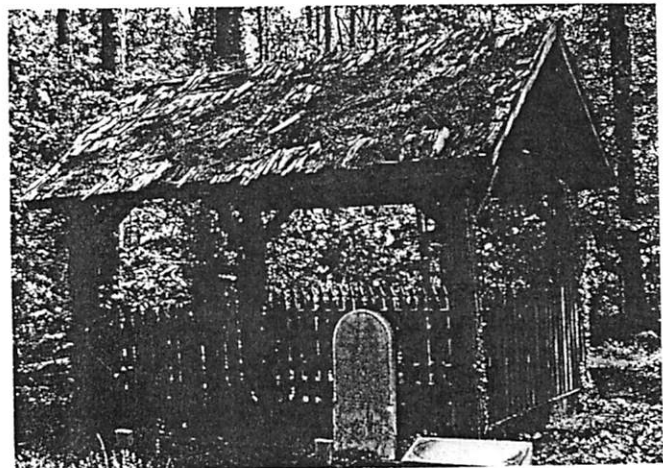
toes, apples, and peaches. The property has remained in the family. (SL)

### Barnabus Jones House

[WA 679] S.R. 1397, *Apex vicinity*



*Barnabus Jones House (Courtesy of the N.C. Division of Archives and History)*



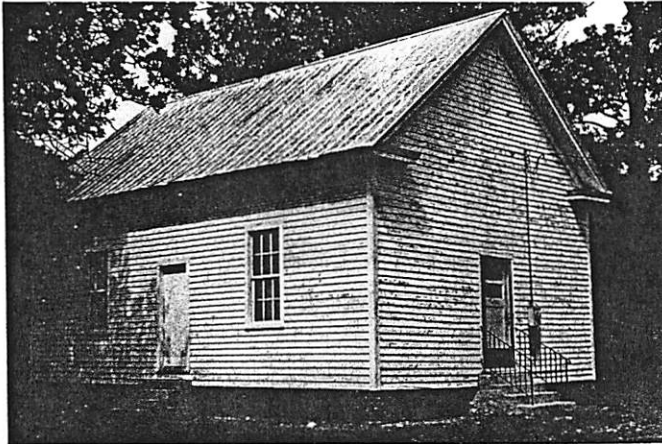
*Grave Shelter, Barnabus Jones Cemetery*

Around 1840 Barnabus Jones erected a two-story Greek Revival dwelling on his farm, which is said to have been part of the large eighteenth-century land grant to Captain Etheldred Jones. Although the exterior of the house has been covered with artificial siding and the front porch has been enclosed, the house still retains its original overall form, plus two handsome brick chimneys with tumbled shoulders and six-over-six and nine-over-six sash windows. Inside, the house shows typical Greek Revival woodwork, with two-panel doors, simple mantels, and a hand-carved newel post. The original detached kitchen remains near the rear of the house, still retaining its wide stone hearth and batten door. To the south of the house, the Jones

family cemetery features a very rare nineteenth-century grave shelter, which is covered by a wood shingle roof and surrounded by a decorative picket balustrade.

### Oak Grove Primitive Baptist Church

[WA 677] S.R. 1379, *Apex vicinity*



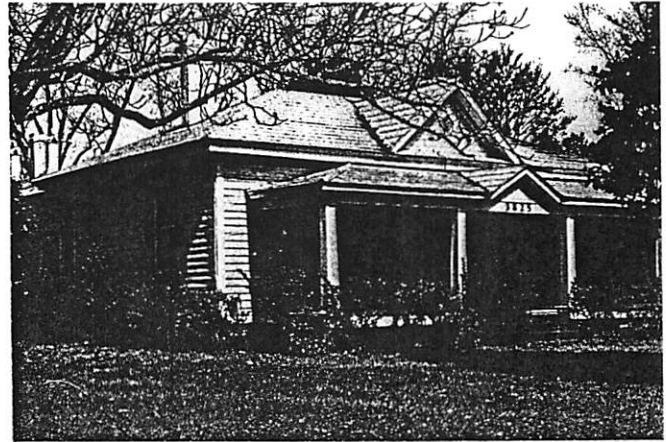
Oak Grove Primitive Baptist Church

The simple frame church was erected in the mid-to-late nineteenth century for the congregation of Oak Grove Primitive Baptist Church on land donated by prominent local resident Barnabus Jones. The small edifice displays the gable-front orientation preferred by most nineteenth-century congregations but is unusual for its three entrances, one each on the front and side walls — a pattern continued from the earlier meetinghouse-plan tradition. Each side entrance is flanked by six-over-six sash windows. Two frame outhouses are located behind the church. There is no cemetery here; church members are buried in the cemeteries of the Primitive Baptist churches in Kennebec or Willow Springs in southern Wake County. (SL)

### Jones-Powell House

[WA 671] S.R. 1010, *Apex vicinity*

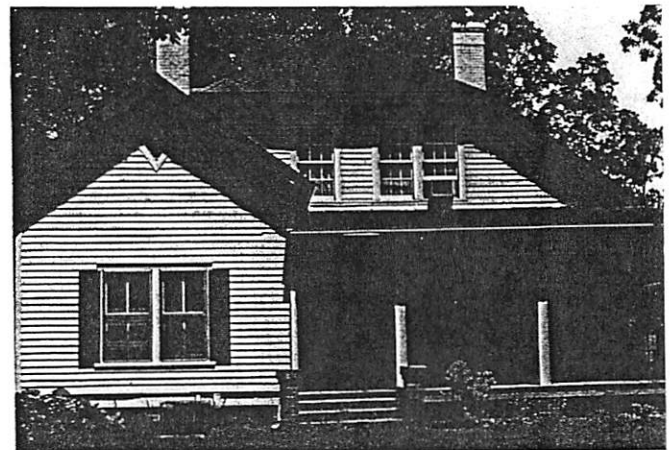
Beverly Jones built this one-story double-pile house around 1840 and finished it with such typical Greek Revival features as a low hip roof, two-panel doors, and six-over-six sash windows. The front roof gable and wraparound porch are later additions. Beverly Jones was the brother of Barnabus Jones, who built another Greek Revival house on his farm nearby [WA 679]. Archibald Powell purchased the Jones property some time after the Civil War. His son William married Rebecca Jones, a descendant of Beverly Jones, and thus the property continued in the family of its original owner. The farm, with its many frame barns and outbuildings, remains in the Powell family. (SL)



Jones-Powell House

### Utley-Powell House

[WA 669] S.R. 1010, *Apex vicinity*



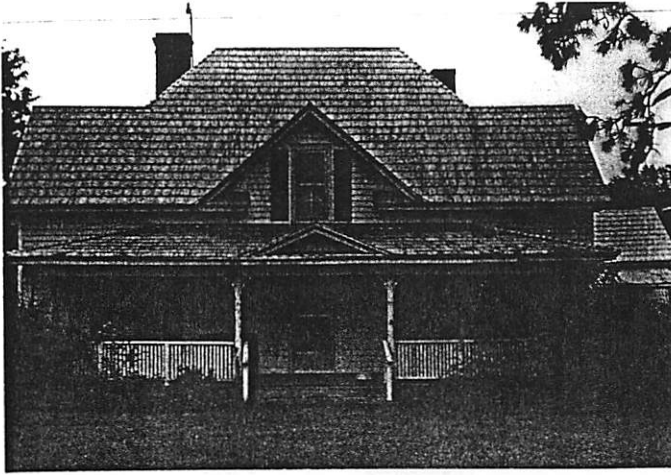
Utley-Powell House

Built around 1918 by Charles Utley and sold to John Powell soon after, the one-and-a-half-story frame dwelling displays an unusual appearance with its broad clipped gable roof, side dormer windows, and front gable wing. The broad porch wraps around the front and one side of the house. A Queen Anne-style stained glass window with one large pane bordered by smaller panes lights the stairwell.

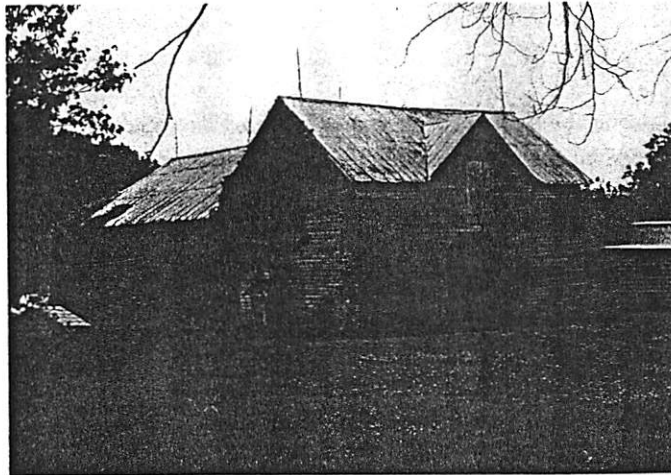
### Kerry Jones House

[WA 665] S.R. 1152, *Apex vicinity*

Known locally as the Kerry Jones House, this early twentieth-century dwelling features a complex hip and cross-gable roof and a simple Victorian porch. The frame barn on the property is capped by a triple-A roof — unusual because the form is almost universally reserved for residential buildings in Wake County.



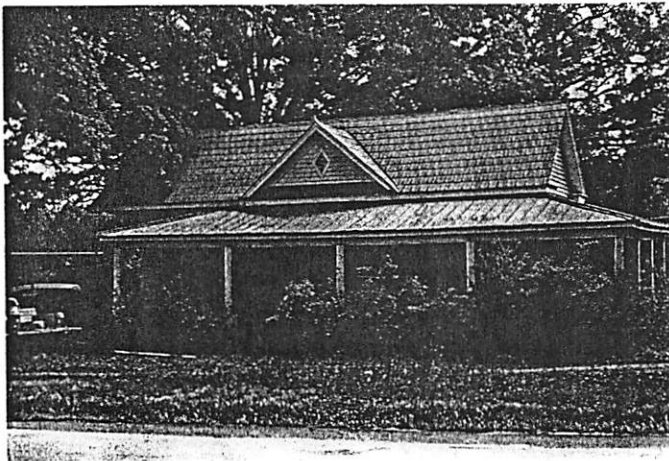
Kerry Jones House



Kerry Jones Barn

### Hermus Powell House

[WA 668] S.R. 1152, *Apex vicinity*

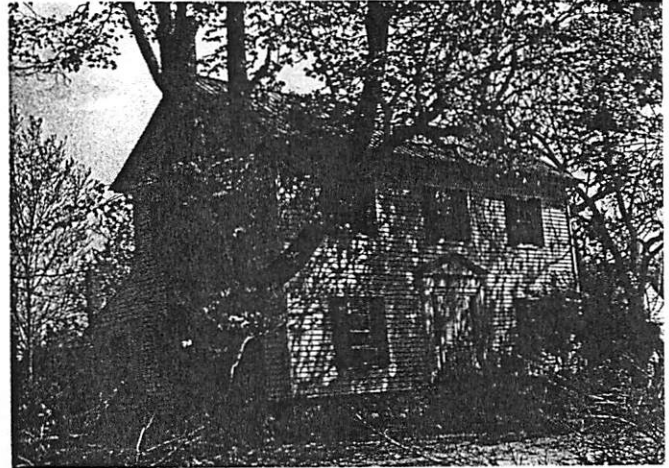


Hermus Powell House

The Hermus Powell House represents countless early twentieth-century farmhouses in Wake County with its triple-A roof, bay window, and diamond-shaped gable vents. The roof is ornamented with decorative finials and patterned metal shingles, and the wraparound porch extends to the rear ell of the dwelling.

### William R. and Mary Catherine Jones Farm

[WA 598] S.R. 1387, *Holly Springs vicinity*



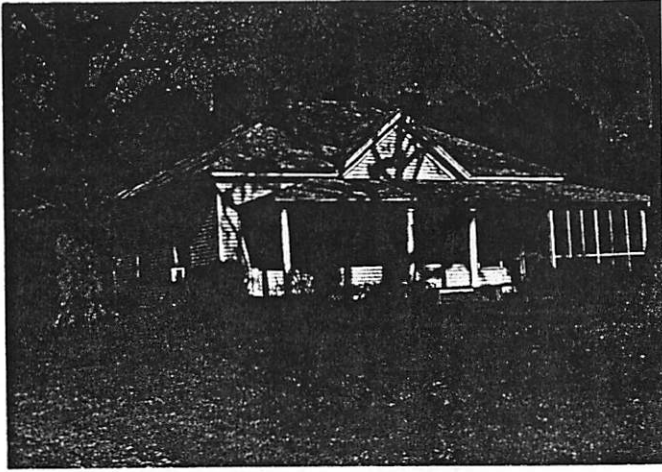
William R. and Mary Catherine Jones House

This unusually large late Greek Revival I-house was built probably in the third quarter of the nineteenth century by William R. Jones and his wife, Mary Catherine. Although the front porch has been removed, the house retains many original features, including a low-pitched gable roof, common bond brick chimneys on each end, six-over-six sash windows, and molded cornerboards. The pedimented Colonial Revival front door surround is a twentieth-century addition. The one-story kitchen and dining ell is divided by a tall corbelled chimney. Several frame outbuildings from the late nineteenth or early twentieth century survive, including a two-room building with an interior chimney near the main house that may have been an earlier detached kitchen or a dwelling.

### Rowland-Jones House

[WA 1251] S.R. 1010, *Apex vicinity*

Wayne Rowland built this one-story pyramidal cottage in the early twentieth century. The frame dwelling has a central front gable and a rear kitchen wing that extends past the east wall of the house, serving as the terminus for the wraparound porch. The porch, which has been partially screened in, is supported by slender Doric columns. Like most pyramidal cottages, the Rowland-Jones House has tall interior brick chimneys on either

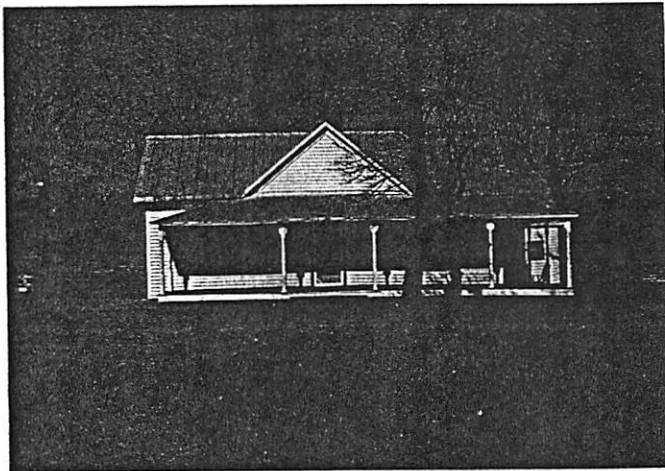


Rowland-Jones House

side of the peak of the roof. James A. and Bessie Jones purchased the Rowland property around 1940, after spending a number of years managing and operating the Oak View Farm [WA 1502] in eastern Wake County for the Wyatt family. On their new farm the Jones family grew vegetables to be sold at the farmer's market in Raleigh.

### Sam Bell House

[WA 1250] S.R. 1010, *Apex vicinity*

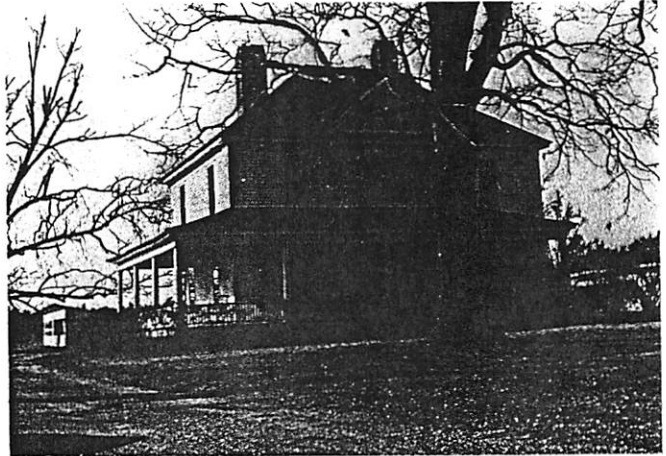


Sam Bell House

A good example of the ubiquitous one-story frame house with triple-A roof, the Sam Bell House was built around the turn of the twentieth century. Like many houses of this form and vintage, one of its most notable features is the porch, which wraps around one side of the dwelling supported by turned posts with sawn spandrels. The front screen door also displays simple sawn- and spindlework.

### Herman Green House

[WA 1277] S.R. 1371, *Raleigh vicinity*

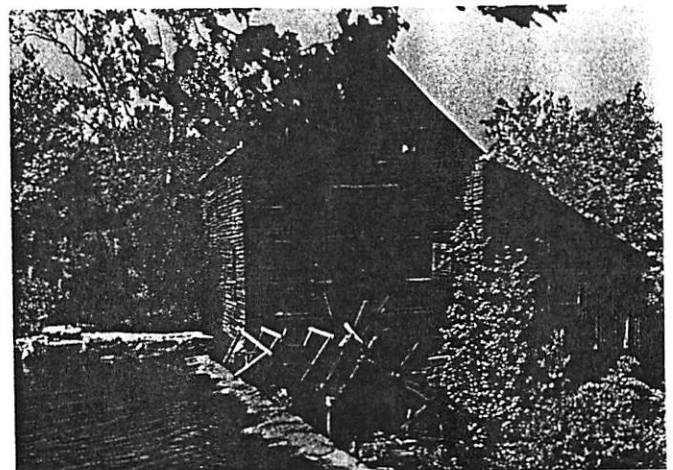


Herman Green House

Built in the early years of the twentieth century, the Herman Green House exemplifies the relatively simple versions of the early Colonial Revival found throughout the county. The two-story double-pile dwelling displays a symmetrical facade, a prominent entrance surrounded by sidelights and a transom, and a Doric-columned wraparound porch. To the rear are a one-story ell and several smaller additions. Behind the house are two chicken houses, a smokehouse, and the chimney of a demolished structure, likely an early kitchen, while the front yard is landscaped with several large oak trees, a magnolia, and other trees and shrubs. (SL)

### Yates Mill

[WA 50] S.R. 1371, *Raleigh vicinity*



Yates Mill

One of only a few examples of the early milling industry surviving in eastern North Carolina, Yates Mill was built and rebuilt in several stages beginning in the late eighteenth century. In 1761 the Earl of Granville granted the mill site on Steep Hill Creek to Samuel Pearson, who ran a milling operation there until his death in 1800. William Boylan, who established Raleigh's first newspaper, the *North Carolina Minerva and Raleigh Advertiser*, acquired the mill in 1820, eventually rebuilding it and modernizing it with new equipment. James Penny and his descendants, including Phares Yates, for whom the mill is named, owned and operated it from 1864 to 1948. Penny's and Yates's mid-nineteenth-century homes still stand nearby [WA 1284 and WA 1279]. The mill was last operated in 1963 and is now owned by North Carolina State University. The Yates Mill Association is currently raising money to restore the building.

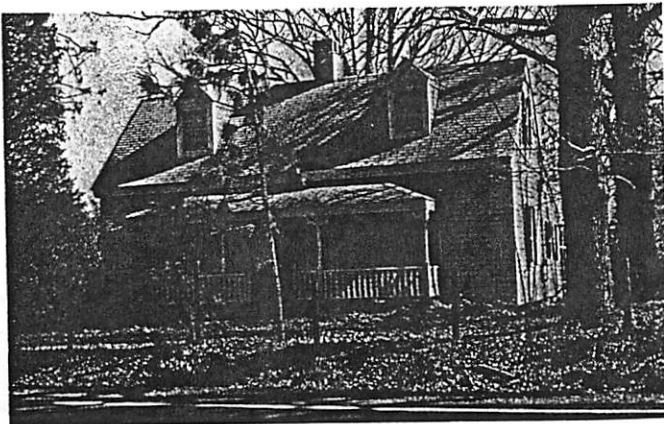
The main block of Yates Mill, which may incorporate some of the original mid-eighteenth-century structure, is a two-and-a-half-story rectangular frame building that typifies gristmills of the eighteenth and nineteenth centuries with its plain, functional appearance. The mill measures approximately 34 by 27 feet and is covered by a slightly overhanging gable roof with exposed rafter ends. A small porch shelters the main entrance on the north side. A one-story shed with a loading dock is attached to the east end.

The interior of the first level is divided into two large areas for milling and storage; a workshop was located in the side shed. The second floor and attic may have been used for storage as well. The wooden millrace and overshot waterwheel are located on the south side of the building. Behind the mill, the large millpond is retained by an extremely well-preserved dam composed of roughly dressed random-coursed stone. (NR)

Edited from John B. Wells III, "Yates Mill," National Register Nomination, 1971.

### Phares Yates House

[WA 1279] S.R. 1371, *Raleigh vicinity*

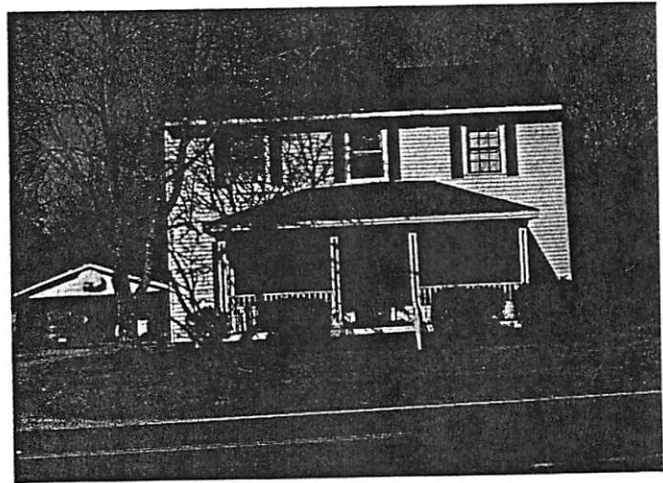


Phares Yates House

This one-and-a-half-story Greek Revival cottage is believed to have been the home of Phares Yates, who owned and operated Yates Mill in the second half of the nineteenth century. Although remodeled in recent years, the house retains a number of its original features, including flush sheathing under the porch, several nine-over-six sash windows, and portions of a flat-paneled wainscot inside. The Victorian front porch is a replacement.

### James Penny House

[WA 1284] S.R. 1381, *Raleigh vicinity*



James Penny House

James Penny, who owned nearby Yates Mill for several years during the mid-nineteenth century, is said to have built this two-story Greek Revival dwelling. The frame house features typical vernacular Greek Revival details, such as a low-pitched side-gable roof, flush eaves, and a boxed cornice; an entrance surrounded by sidelights and transom; and six-over-six sash windows with cornerblock surrounds, but it has been updated in recent years with a new porch and vinyl siding. The interior rear chimneys have been rebuilt.

### Jesse W. and Lillian F. Penny House

[WA 1283] S.R. 1378, *Raleigh vicinity*

Built in 1898 by Jesse W. and Lillian Penny, the two-story farmhouse epitomizes rural prosperity and respectability in the late nineteenth century. The house, which was built onto a slightly earlier one-story dwelling (now the ell), displays the triple-A roof so popular at the time and features a prominent wrap-around verandah embellished with turned and sawn ornament. Other notable features include diamond-shaped gable vents, gable returns, and molded cornerboards with capitals. An origi-



Jesse W. and Lillian F. Penny House

nal picket fence encloses and subdivides the yard around the house, paralleling the run of the porch on two sides. To the rear stand several barns, a smokehouse, and a well. (SL)

### Swift Creek Elementary School

[WA 1290] S.R. 1009, *Macedonia*



Swift Creek Elementary School

Swift Creek Elementary School was constructed in 1932 as a consolidated school to serve the children who had previously attended smaller community schools in the Swift Creek area. The school originally had seven rooms, a basement, and an auditorium. Like many schools built during this period, the H-shaped brick building featured simple Colonial Revival details, such as lunette gable windows, contrasting quoins, and multipaned transoms over the doors. A gymnasium was added to the campus in 1956, and in 1972 an additional classroom building was constructed. The old main building was razed in 1991 to make way for a new school.

### Inwood Baptist Church

[WA 1297] S.R. 1370, *Raleigh vicinity*

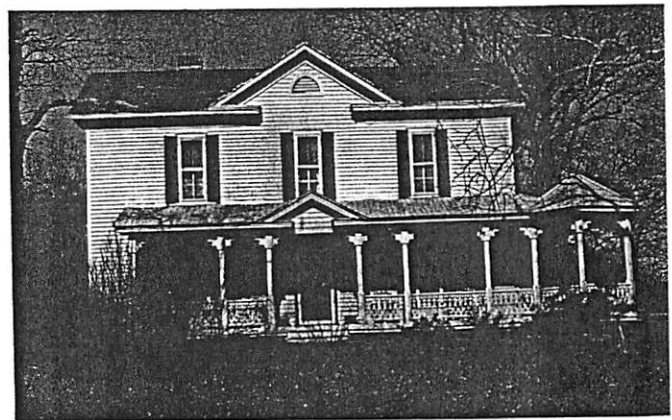


Inwood Baptist Church

Built ca. 1935, the simple, brick-veneered Gothic Revival church serves the congregation of Inwood Baptist Church, organized in 1877 in the formerly rural community of Rhamkatte. The gable-front church building features pointed-arch windows and gable vents, exposed rafter ends, and a rear cross-wing. An educational building has been constructed behind the church. The cemetery contains graves dating from the late nineteenth century to the present marked mostly with manufactured stones.

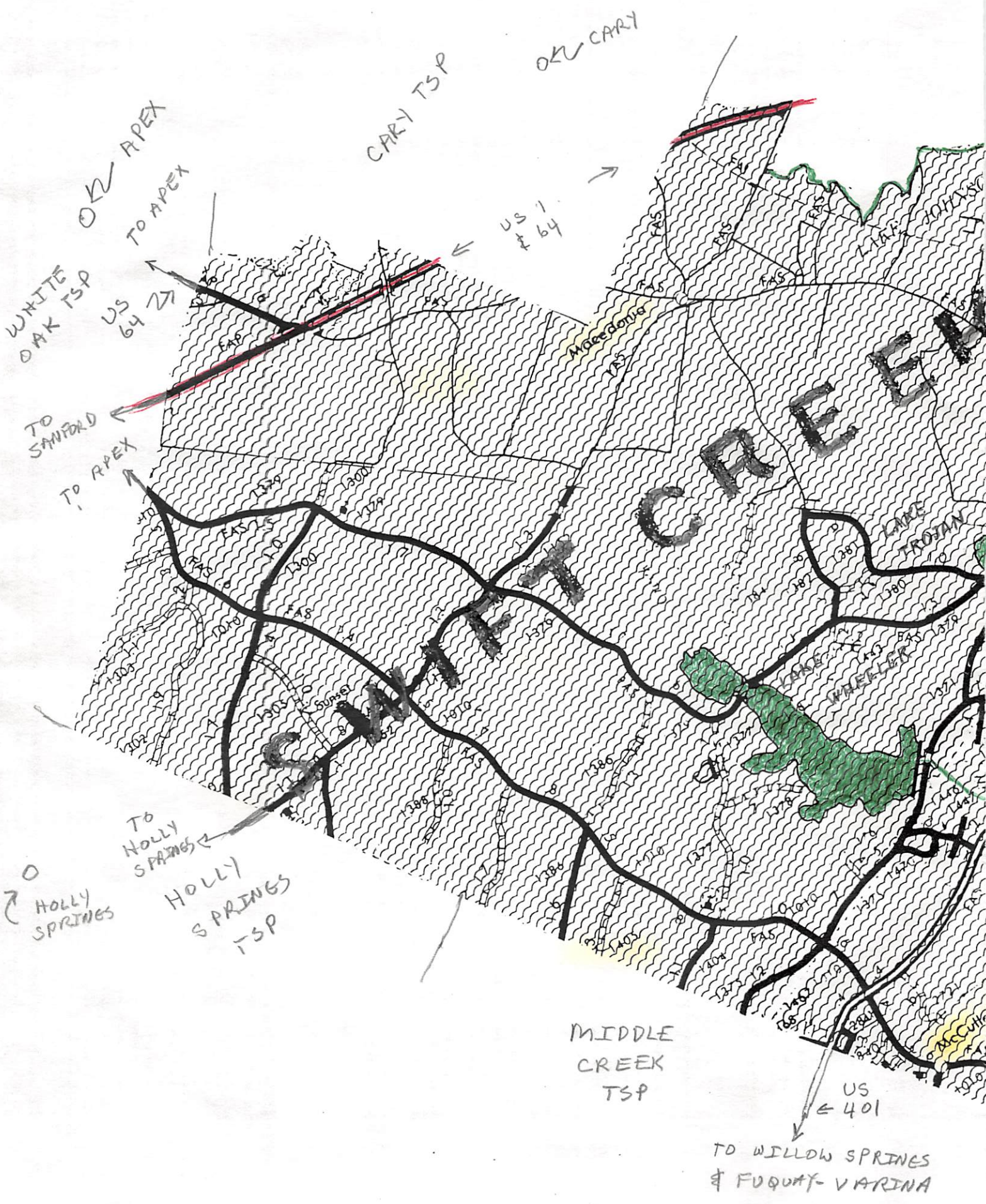
### David Smith House

[WA 1290] S.R. 1370, *Raleigh vicinity*



David Smith House

Local tradition holds that this handsome Victorian farmhouse was the boyhood home of former North Carolina governor J. Melville Broughton, but David Smith and his descendants have owned it since around 1910. The most prominent feature of the triple-A I-house is its wraparound porch, which features turned posts, sawn brackets, delicate sawn balusters, and an unusual corner gazebo.

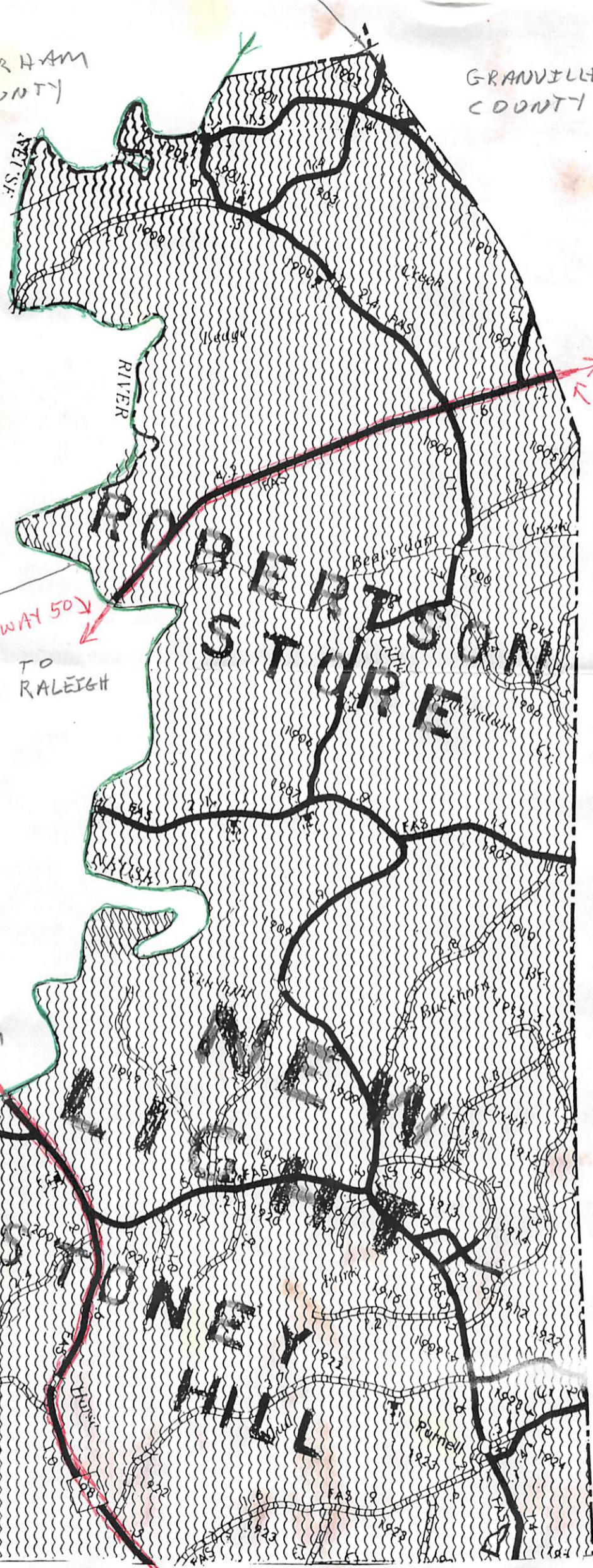






DURHAM COUNTY

GRANVILLE COUNTY



TO OXFORD  
HIWAY 50

ROGERS STORE

HIWAY 50  
TO RALEIGH

BARTONS CREEK TSP

TO DURHAM  
HIWAY 98

BAY LEAF

FALLS OF NEUSE

HIWAY 98  
TO WAKE FOREST

WAKE FOREST TSP

STONE HILL

ROBERTSON STATION

FROM: Waldo Truesdale

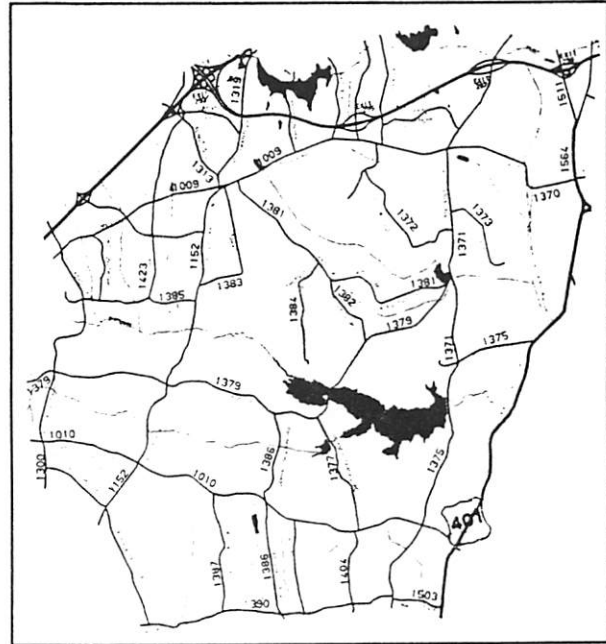
COPIES MADE FOR:

Vol 7 No 2  
 Summer/Fall 1999  
 BT: Irene Kitching

## SWIFT CREEK TOWNSHIP

CEMETERY FILE  
 GEOGRAPHICAL FILE

Named for the creek flowing W to E (includes Lake Wheeler), this township touches seven others. Raleigh Twp. to the N starts at US1/64 and I-40 E, again N at SR1319. Bounds go E again via Walnut Ck. (& northern shores of Lake Johnson and Lake Raleigh) to SR1371S, I-40E to Wilmington St. (no access) which on the S joins US401. Townships on the E are Saint Mary's, Panther Branch, and .75 mi of Middle Creek which also is S. That line goes W at SR1503, doglegs N on SR1375 and W on SR1390, turns N at SR1389. To the W is Holly Springs Twp.: at SR1152 the line doglegs N to SR1305, continues N on SR1300 - in a half-mi crosses SR1010. On the W for 3 mi is White Oak Twp. At SR1009 Cary Twp. is N. Going E to SR1423, the line goes N to SR1313; then briefly E to US1/64 N and to the beginning at I-40E.



Wake County Geographic Information Services, Inc.

Surveyors: Geneva DAVIS, Olivia MCNEILL, Mary Louise JAMES, Martin WINFREE, Bessie S. MCELVEEN, Brian ALEXANDER, Dewey ROWLAND. A number of reporters. Nan FARLEY is completing the survey.

Dates of Survey: From 1968 on. Be aware that distances may not be exact.

\* Destroyed, fieldstones or otherwise noted. Very few inscribed stones before mid-1800s are found.

**BRANCH, R.C.** (his is the only engraved stone; sunken graves)

On SR1379 .1 mi E of Swift Creek Baptist Church. S on dirt road about .3 mi to last house. Walk forward same distance or more; edge of woods on E.

**BUFFALOE, Wiley L.** (reported but not precisely located)

On N side of SR1009 and near Trailwood Dr. (S of I-40)

**CAMPBELL, Donald** - 2nd family (he is buried at Raleigh City Cemetery)

From SR1009 (1 mi E of SR1382) take SR1350 S .8 mi (beyond deep curve)

**CATAWBA SPRINGS CHRISTIAN CHURCH** (to be inventoried; church has names only)

NW quadrant of SR1010 and SR1377

**CRAYTON/CREIGHTON** (in or near original Macedonia church cem; not inventoried)

From SR1009, take SR1372 S .1 mi. Cem on W side before creek.

**EDWARDS, William**-Cemetery destroyed; graves removed to Swift Creek Church

From SR1009, N side between #5309 & #5409, uphill west of Silver Lake.

WAKE COUNTY CEMETERY SURVEY--SWIFT CREEK

---

**ERNEST MYATT PRESBYTERIAN CHURCH** (not inventoried)

W side of US401 S, 1 mi S of Tryon Hills and behind church

**FRANKLIN, Burrell**

From SR1009 go S .6 mi on SR1152. E side.

\* **FRANKLIN, Charles** - destroyed when plowed over for farming

Somewhere under Swift Creek Shopping Center. SE quadrant of SR1009/1152.

**FRANKS, Robert J.** family members (he is bur at Catawba Springs Cem)

On unnamed road N of SR1010 (Deer Meadow Dr on S) go ca .2 mi. E side.

**FRANKS, James D.** - moved to Macedonia Methodist Cem

Original site: E side SR1386 less than .1 mi S of SR1379

**GULLY, William/CAIN, James**

SE quadrant of SR1009 and SR1423

**HOWELL, Sewell**

NE quadrant SR1300 and SR1379 on grounds of St. Francis Methodist Church. Right side of church next to parking lot. White picket fence.

**INWOOD BAPTIST CHURCH**

W side of SR1371 some .9 mi S of SR1009

**JERIDAN** (as named on map; not yet visited)

From SR1010 go S .3 mi on SR1404; W side .2 mi. Reported as unknown (if same one) in Belmont Estates subdivision; on left between several houses.

**JONES, Barney**

From SR1152 go .2 mi W on SR1379. N side close to road

**JONES, Theophilus**

E on SR1379 from Swift Creek Church just over 1 mi. S side at curve

**JONES, William Rufus**

From 1010 take SR1387 ca 1 mi S. W side down drive (across lake on E side)

**KEITH, Lemuel**-destroyed (on SR 1664, another township);

graves removed to SE Quadrant US1/64 & SR1319 at end of parking lot of first building

\* **LANGSTON, James G.** (plans are to install a marker)

From SR1010 go S on SR1387 to Langston subd. Cem at end of 1st cul-de-sac.

---

WAKE COUNTY CEMETERY SURVEY--SWIFT CREEK

---

**LORBACHER, Rudolph**

From SR1010 go S on SR1388 ca .6 mi. 30 yds from W side of road.

**MACEDONIA METHODIST CHURCH** (see also Crayton/Creighton above)

Current cemetery is across SR1009 from present church on NW quadrant with SR1313. August 1986 WCGS newsletter (p. 86-44) lists burials.

**PATRICK, James R.**

E side of SR1152 and .35 mi N of SR1547 (1 mi S of SR1152)

**PENNY, James**

From SR1371 turn W on SR1381; .4 mi to Penny house, N side. Dirt road to cem some hundred yds; W side, probably invisible but has wire fence.

**PINEY PLAIN U CHURCH OF CHRIST (CHRISTIAN)**

From SR1009 go .1 mi on SR1423. E side; cem on S side of church. Burials listed in September 1986 WCGS newsletter (p. 86-57).

**POPE/HARRISON** (three graveyards in the general area were removed to this site)

From SR1009 take SR1300 S. Cem 100 yds past SR1423. E side. Iron fence.

**SANDERS, Edwin T.**

SE quadrant SR1009 and SR1383. In August 1986 WCGS newsletter (p. 86-45).

**\* SPEIGHT, William**

From SR1152 go W 335 yds on SR1385. S side.

**\* STEPHENS, Anderson**

On SR1009 across from Swift Creek School in a field

**STEPHENS, Hinton R.** (he has no stone; others do)

W side of SR1152 .3 mi from SR1009 down driveway S side behind house

**STEPHENSON, Fabius Lane**

E side of SR1152 and .3 mi N of SR1547 (.1 mi S of Patrick cem)

**STEPHENSON, David**

From SR1009, take SR1375 S. E side beyond Swift Creek.

**STEPHENSON-SPEIGHT**

From SR1009 ca .9 mi on SR1152 to Fielding Dr. SE corner.

**\*STRAIN, John Benton**

N side of house #8635 on W side of SR1371, S of SR1010

WAKE COUNTY CEMETERY SURVEY--SWIFT CREEK

---

**SWIFT CREEK BAPTIST CHURCH** - partial inventory  
From SR1152 go E .2 mi on SR1179. N side.

? **THOMAS** (Af-American) - reported "unknown and in 1930s almost abandoned"  
Beyond Crayton Cem .2 mi; path on E side, the one so-named on map?

**UNKNOWN** - E side of SR1300 halfway between SR1379 and SR1010

-----

**CURRENT NAMES OF STATE ROADS IN SWIFT CREEK TOWNSHIP**

SR No. Current Name

1009 Tryon Rd  
1010 Ten-Ten  
1152 Holly Springs Rd  
1300 Kildaire Farm Rd  
1305 Arthur Pierce Rd  
1313 Walnut St  
1321 Avent Ferry Rd  
1350 Dover Farm Rd  
1371 Lake Wheeler Rd  
1372 Mid-Pines Rd  
1377 Barney Franks Rd  
1379 Penny Rd  
1381 Yates Mill Pond Rd  
1383 Campbell Rd  
1385 Lilly Atkins Rd (or Atkins)  
1386 N of 1010 - Graham Newton Rd  
1386 S of 1010 - Bell's Lake Rd

SR No. Current Name

1387 West Lake Rd  
1388 Lawdraker Dr (should be Lorbacher!)  
1389 Pierce-Olive Rd  
1390 Optimist Farm Rd  
1404 Johnson Pond Rd  
1423 Piney Plains Rd  
1503 Doney Brook Rd  
1547 Swift Ridge Rd

State and National Highways: (as in bounds of this township)

US1/64 From SR1313 to I-40  
US401 S from I-40/440 to Johnston Co. but cannot exit on/off at I-40  
I-40 From US1/64 E to SR1319. And again from Exit 287 to US401 (also is I-440 along here)

Please report errors or other cemeteries to Irene Kittinger, 1218 Scott Pl., Cary NC 27511-4721 (include SASE) or tel: 919/467-6989. Until survey is published, inquire only about specific names.



SWIFT CREEK TWP - WAKE CO, NC

○ FROM: Wake Treasurer Vol 27 No 1 Winter / Spring 2007 - 2036

" Branson's North Carolina Business Directory for 1872 -  
Transcribed by HOPE BLACKFORD - (Wake County, NC parts only)

SOME ITEMS:

**PROMINENT, SUBSTANTIAL AND INFLUENTIAL CITIZENS**

The following are among the prominent, substantial and influential citizens of their respective townships, to whom reference should be made in a work of this character:

*Historical Raleigh: With Sketches of Wake County (from 1771) and Its Important Towns ...*, by Moses Neal Amis, Page 15-23, Printed 1913 [Found on GoogleBooks]

In Wake Treasurer lists were provided for 18 Townships but not for the Township of Raleigh as other records reveal lists of notable citizens.

For RPL Files separate extracts have been made for the set of 18. This one is for SWIFT CREEK TOWNSHIP

▷ ( Swift Creek - H. H. Atkins, W. E. Baker, E. T. Banks, J. M. Banks, W. D. Bashford, W. B. Booker, L. J. Brooks, A. A. Buffaloe, R. E. Buffaloe, W. D. Buffaloe, T. J. Caudle, William Edwards, B. S. Franklin, J. H. Franks, J. W. Garner, H. J. Goodwin, H. P. Green, T. L. Jones, J. G. Langston, Rudolph Lorbacher, S. R. Lee, J. E. Massey, Dr. J. J. L. McCullers, B. J. Upchurch.

○ THE FAMOUS 1889 TRIAL OF EUGENE GRISSOM, SR - As Presented in Chapter 41 (Pg 417-431) of THE TAR HEEL EDITOR By JOSEPHUS DANIELS "J.D." - 1939. This Chapter is extracted here especially to record important Wake Co, NC names and because S. OTHO WILSON a resident of RAMCAT is referenced.

PG 417

JD takes much credit for the downfall of Dr Gussom. That at his.

THE EVENT of 1889 which stood out conspicuously was the trial of Dr. Eugene Grissom, Superintendent of the Insane Asylum, on charges preferred by John W. Thompson, Steward, and Dr. Sion Rogers, one of the physicians of the Institution. They charged Dr. Grissom with immorality with patients and female attendants, with cruelty to patients, and with graft. The publication of these charges shocked and surprised the bulk of the people who believed that Dr. Grissom was both a great alienist and a man of high character. He had received all the honors of the State Medical Association. He had delivered addresses before Medical Associations all over the country. A year or two before the charges were brought against him, Dr. Grissom connected himself with the Methodist Church. When the charges were made, he called upon the leaders of that church to stand by him. The editor of the Raleigh Christian Advocate, Rev. Dr. Frank L. Reid, believed in his innocence and came to his aid in his paper and denounced as slanderers those who had used what he called gossip to put a stain upon the reputation of a great man. In Raleigh Dr. Grissom had many friends. Every doctor in Raleigh except one or two were his partisans. He was a member of a leading drug firm of the city, and incidentally he had purchased most of the medicine and liquor used by the Asylum from that firm. It was charged that this made him guilty of graft.

After the Civil War Dr Gussom came to the State Senate as a Republican of the Reconstruction Party. The Spoils System allowed GOV. W. W. HOLDEN to eject a Democrat and to name DR. GRISSOM as Superintendent of the N. C. Hospital for the Insane (DIX HILL). He was politically astute and survived through subsequent Democratic administrations of Gov Zebulon Vance, T. J. JARVIS & ALFRED M. SCALES. In 1884 he supported Scales, Democrat, for GOV over Dr Tye York Daniels was against Gussom because he saw him slap an older Senator. John W. THOMPSON was steward of the Asylum & a member of the Watauga Club. He was unhappy with Gussom & said Dr. FRANK FULLER, Chief Asst. Physician, was responsible for all good works, Gussom being corrupt in Administration and in life.

PG 425:

At that time the Farmers' Alliance was holding meetings all over the State. The day after the meeting in the Metropolitan Hall, they were to hold a big meeting at Auburn. S. Otho Wilson, a leader of the Alliance, came to me that morning and said he wanted to introduce resolutions denouncing the Board and Grissom and asked me to write them for him. I did so and they were unanimously adopted by 2,000 Wake farmers. This was followed by like meetings in other parts of the State.

JWT said Dr Sion Rogers, Asst Physician, agreed with him. SPIER WHITAKER & A. M. WADELL <sup>EDMUND</sup> prosecuted Gussom with the Board of the Asylum sitting in judgement. Dr E. B. Burke Haywood was Board Chairman. Gussom's Council included: THOMAS G. FULLER, ex GOV THOMAS J. JARVIS, CHARLES M. COOKE of Franklin (County?), two sons of Dr E. B. Haywood [A.W.H & ], ARMISTEAD JONES & T. P. DEVEREAUX. The trial, incidentally, revealed severe faults of DR SION ROGERS. The Board acquitted Dr Gussom on a split vote. There was an uproar over the acquittal as illustrated by the Farmers Alliance. Ex GOV HOLDEN came out of retirement to speak in favor of Gussom during the uproar but did him more harm than good. GOV DANIEL GOULD FOWLE, with advice of JD, reconstituted the Board adding OCTAVIUS COKE & JOHN B. BROADFOOT of Fayetteville. Gussom got some of the new Board members drunk but they were rescued by JOHN W. THOMPSON & A. D. JONES. Gussom blamed RICHARD H. SMITH. ALFRED D. JONES, a friend of JD heard Gussom trash JD on a Raleigh Street. JD also encountered ROBERT GIULIO GRISSOM, a S/O Dr Gussom and also EUGENE GRISSOM, JR when JR was an employer of U. S. DEPT. of INTERIOR when JD was Chief Clerk in 1873 & still there in WWI when JD was SEC USN in WWI at which time EUGENE GRISSOM, III came to see JD. Dr Gussom wanted to go & was little but soon died. Years later JD was in CO & was escorted by the secretary of the Chamber of Commerce whose wife was D/O Dr Gussom. She was very cordial.

