

K NIGHTDALE

2 Zebulon Record THUR 27 OCT 1994 Zebulon, NC

KNIGHTDALE

EDDIE TAYLOR
HENRY HAYWOOD KNIGHT

Taylor's historical hobby is a family thing

By MATT SHAW
Editor

Eddie Taylor had the type of parents who always wanted to do something educational while they were on vacation. So, as a kid, he was dragged through dusty ghost towns, battered old forts and museums.

Somewhere along the way, he picked up a lifelong passion.

"Their interest in history sparked mine," Taylor said. "What I enjoyed most was reading stories not necessarily of the great men, but of the day-to-day routine of ordinary people."

In particular, he recalls a trip the Raleigh family made to Gettysburg, Pa., where Union soldiers turned back Confederate troops in 1863 in the pivotal confrontation of the Civil War. "Seeing the same ground that they fought on and died on, it made a strong impression on me," he said.

After his expeditions, Taylor would return home and "read everything I could on the sites," he said.

That drive has now led him to want to write about history, in particular, that of Knightdale and the surrounding communities. In recent years, Taylor has published articles about a fire that nearly destroyed the old downtown area in 1940; Hinton Lane, a one-time plank road that can be seen as a trail near Planter's Walk; and Henry Haywood Knight, the town's name-

sake, and his involvement as a Confederate soldier at Gettysburg, among others.

He has also scoured woods near the town to find old slave graveyards that, once sighted, can be

protected from logging operations. As a member of the Knightdale Heritage Commission, since disbanded, he helped get the Knight family home place on the National Register of Historic Places.

The past is alive in eastern Wake County, he said. "If you listen closely to the people, it's still here."

What Taylor hopes to do is add to the public record of this area's history so that future generations will know more about the forces and people that shaped eastern Wake County. He has always found the people of Knightdale, Wendell and Zebulon to be "keenly interested"

in their heritage, he said. What he does is feed that interest.

"I try not to focus on names and dates; I'd rather tell the story behind the story," he said.

For every Lee or Grant, there were "thousands and thousands" of people who helped shape how this country developed, he said. Taylor is concerned about how they lived.

People 50, 100, even 200 years ago are much like people today, he said. If you read their diaries, letters and papers, you will find their motivations, desires and beliefs are not at all foreign or unusual. "To be honest, we have not changed much at all," Taylor said. Only the pace of life has accelerated, he added.

"History is more than just the names and dates we learned in school," he explained. "When you strip it down to its bare bones, history is the story of people."

Exploring the story of Knightdale's people is rewarding, he said.

'Seeing the same ground that they (the Civil War soldiers) fought on and died on, it made a strong impression on me'
— Eddie Taylor

After moving to town 15 years ago, "I was amazed to find so much history in this area," he said. "We have a heritage here in Knightdale that we can be very proud of."

Since Knightdale was only incorporated in 1927, at least a handful of people are still around that can give firsthand accounts of the town's early days, Taylor said. In fact, the community traces its origin back to the turn of the century and the construction of the railroad tracks through town.

The Knight family was instrumental in luring the railroad here, along with the donation of land for a school and a church. Had the rail-

road gone instead to Shotwell, a community of equal or greater size at the time, Knightdale probably wouldn't exist today as more than a crossroads, Taylor said.

Now, with the town's rapid growth, many of the still existing landmarks are threatened by development. Taylor terms himself "middle-of-the-road" on what should be kept. "You can't preserve everything," he said. If every property with any historic qualities was off-limits, construction in Wake County would probably come to a halt.

It's necessary to "pick and choose" what is important enough to be protected, he said. He aids in this job through his company, The Taylor Group. Acting as a consultant, Taylor researches the history of properties throughout North Carolina. Some of the research is required by local or state regulations before development can begin. "I might need to find out if an open field wasn't once a landfill" or atop the remnants of a historic site, he said.

He also researches the lineage of groups or organizations.

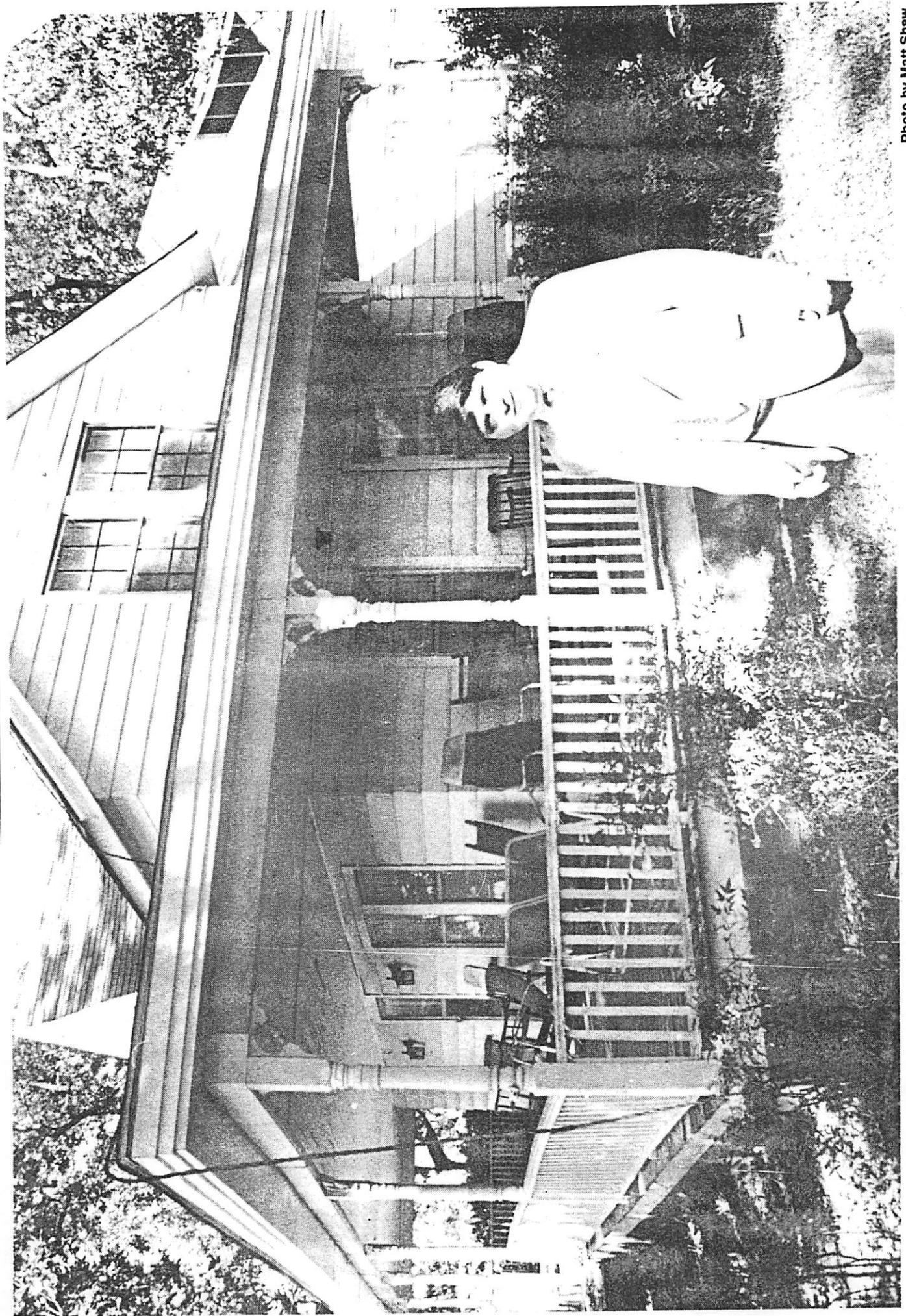


Photo by Matt Shaw

Eastern Wake historian Eddie Taylor visits the Knight family homestead, home place of Henry Haywood Knight, regarded as the founder of Knightdale.

Wilson Record 22 OCT 1992 Wilson, NC

Knightdale Plays Key Role In Late Civil War Strategy

By EDGAR L. TAYLOR
Correspondent

Between 1861 and 1865, our nation endured a great civil war, believed by many historians to be the key turning point in the American story.

The Civil War, replete with tales of brother fighting against brother, clearly represents the growing pains of our nation. On one side, the forces of the Southern Confederacy fought for economic freedom and states' rights. Pitted against them lay the massive Federal army, dedicated to preserving the delicate union at all costs.

Although the Confederacy enjoyed early successes, the year 1865 found the Southern cause in a quagmire of lost opportunities, dwindling resources and rampant discontent. President Abraham Lincoln, fearing the cost in terms of human lives lost if the war continued, ordered Gen. William Tecumseh Sherman and his enormous Union army to strike at the heart of the South in the hopes of forcing a quick surrender. Many southern towns fell prey to Sherman's onslaught of looting, burning and pillaging.

After wreaking havoc on South Carolina by burning the capital of Columbia, Sherman turned his forces northward into North Carolina.

At Bentonville, Sherman defeated Confederate forces under the command of Gen. Joseph E. Johnston, sending them reeling westward with Sherman in hot pursuit.

However, before Sherman could again engage Johnston in battle, Gens. Robert E. Lee of the South and Ulysses S. Grant of the North signed the surrender at Appomattox Courthouse in Vir-

ginia. Even though this document officially ended the Civil War, the Union command issued orders to Sherman to occupy Raleigh for the purpose of restoring order to the chaotic state of affairs. Although many people know that Sherman and his troops entered Raleigh on April 13, 1865, few know of the Union presence in Knightdale during those momentous days.

With orders in hand to invade and occupy Raleigh, Sherman met with his top generals on the night of April 12, 1865, to map out strategies for the final invasion set to take place the next day. Being fearful of a sudden attack upon them from fortified Confederate troops, Sherman ordered his men to split up so they could enter Raleigh from several different directions, thereby minimizing the risk to his enormous army. Gen. John Logan of the 15th Corps

received the assignment of approaching Raleigh from the southeast and then turning due east to cover the surrounding countryside, placing the Knightdale area squarely in the path of the oncoming Union juggernaut.

Part of the task that lay ahead for the 15th consisted of protecting the old Hinton's Bridge which provided a safe crossing of the Neuse River near modern-day Knightdale. When troops arrived at the bridge, they discovered elements of a Confederate rear guard attempting to destroy it, which would have cut off the advance of Union troops into eastern Wake County.

Logan's Missouri Cavalry successfully defended the bridge, driving out the Confederates from their positions. As Logan advanced beyond Knightdale toward Eagle Rock, he found it nec-

essary to depart from his intended path. Because of the ever-present danger of attack, Logan felt it best to traverse the surrounding woods and fields in order to conceal his troops from ambush by Confederates who might be massed along the main roads. This slowed Logan's advance considerably.

As darkness approached, Logan received word from Sherman that his divisions should camp somewhere around the Neuse until daybreak, awaiting a return trip into the city the next morning. Sherman further directed him not to move toward Raleigh unless he heard heavy firing coming from the city, which would indicate that Confederates had fired on Sherman's main army which had inundated the city with wave after wave of blue-clad soldiers.

While searching for suitable lodgings, Logan's Second Division, led by Capt. C.A. Earnest, chose the Clay Hill Plantation house of Betsy Hinton. The residents of this and other nearby plantations, unaccustomed to the presence of these interlopers, stayed in an uneasy state of panic throughout the night of April 13, 1865.

All hoped it would be a peaceable evening, but such was not the case. According to eyewitness testimony of a slave, Union troops at Clay Hill carried off or shot many farm animals, some of which were left to die in the yard. Then, as if to further the gloom of

the evening, the residents of Clay Hill witnessed three of their Confederate soldiers turn themselves in as deserters. Even though the air at Clay Hill eventually returned to a state of calm later in the evening, other homes in the area did not fare quite so well.

Marauding Union Troops Ransack Hinton

Homes During Civil War

At the same time these depredations occurred, Union troops ransacked another Hinton home. Midway, located not far from Clay Hill, witnessed scenes of violence unmatched by any other home in the area. Not only did these men carry off farm animals, they burned a cotton press and a gin house.

According to Elizabeth Reid Murray, a local historian, one of the Hinton's living at Midway at the time salvaged at least one valuable item from the marauding Yankees. By placing some gold coins in an iron box and hiding this box in a nearby pond, the Hinton family kept the soldiers from finding this part of their be-

longings. However, a portrait of Mrs. David Hinton did not escape injury. As a final token of his disgust with the state of affairs, a Union soldier slashed the painting with the bayonet of his gun.

For the next three weeks, Union forces controlled nearly every aspect of life in Wake County. The entire area remained under siege, in a constant state of tension. When news of the assassination of Lincoln reached the ears of the soldiers camped in and around Raleigh, tempers flared into scenes of heated revenge.

On the night of April 17, 1865, a

band of Union soldiers marched on Raleigh, intent on burning it to the ground in retaliation for their fallen president. If not for the quick thinking of the same Logan who had invaded Knightdale, Raleigh would have fallen victim to the Union rampage.

Logan single-handedly turned back these men, threatening to shoot any man who dared to oppose him. These tensions remained high until some days later when Johnston and Sherman reached suitable terms of surrender at the Bennet House. After this surrender, Union troops once again traveled throughout eastern

Wake County, including the Knightdale area. Some headed north for the grand parade in Washington, D.C., which took place about a month later. Some simply went home. Still others, so impressed with the beauty of this area, decided to settle here, making positive contributions to their newfound community.

This area continued to serve as a backdrop to the entire Union operation in and around Raleigh. From here, Logan's 15th Corps could move freely into and out of Raleigh itself as needed. Also, the wealth of our countryside afforded the Union troops excellent foraging, where they could find food and water in good supply.

From a strategic point of view, maintaining a presence in the Knightdale area served to cut off any attempt by die-hard Confederate soldiers from mounting a desperate attack on Sherman's main army from the east.

Although only playing a small part in the grand scheme of the Civil War, it should always be remembered that this area did indeed see action in the closing days of this defining period of American history.

WAKE CO, NC - KNIGHTDALE

○ The Zebulon Record THUR 8 OCT 1987 Zebulon, NC

Biographical sketches of

Knightdale mayors

△ BENNETT LEWIS WALL (Mayor, 1927-34)

Bennett Lewis Wall was the first mayor of Knightdale. He was born in the Shotwell community in 1887. He went to school at the Shotwell School.

His first job was as a salesman for the New England Insurance Co. He later operated the Knightdale Drug Co. He served as postmaster of Knightdale for 27 years.

Wall first married Evie David Harrison. They were the parents of six children, as follows: Elizabeth, Bennett Harrison, Lewis McGinnis, Joyce, Harold and Ada Burton. He later married Myrtle Umstead, and they had one child, Gail Mann.

Wall died in March 1941.

△ LANDON ANDERSON DOUB (Mayor, 1934-38)

Landon Anderson Doub was born in 1889 in the Shotwell community of Wake County. He attended Wakelon High School in Zebulon. He went to North Carolina State College in Raleigh and received his law degree from a private lawyer, Dr. Pell.

Doub was a lawyer and also operated a general merchandise store on the corner of Fayetteville Street and Railroad Street in Knightdale. He served as a member of the Wake County Draft Board during World War II and was Wake County treasurer for a number of years.

He married Mae Horton on Dec. 15, 1915. They did not have any children. He died in 1974.

△ JOHN E. DAVIS (Mayor, 1938-40)

John E. Davis was born in Wake Forest sometime before the turn of the century (the exact date is not known). He attended Wake Forest High School and graduated from the old Page's School of Pharmacy in Raleigh.

Davis worked at the Knightdale Drug Co. for many years. He was a licensed pharmacist and manufactured fountain syrups and soft drinks.

Davis had one child, a daughter. He died in the fall of 1941.

△ ELIJAH DANIEL FLOWERS (Mayor, 1940-42)

Elijah Daniel Flowers was born in Cross County, Ark., on Feb. 15, 1894. The family moved back to Wilson County (N.C.) when he was a small boy.

He attended Rock Ridge High School in Wilson County. He went to Wake Forest College and studied law. He served as a justice of the peace in Wilson County as a young man. He practiced law in Raleigh and Wake County for many years.

Flowers married Maggie Pearl Jackson in Edgecombe County on Aug. 18, 1916. They were the parents of eight children — six girls and two boys.

He died in 1955.

△ DR. RUPERT RYAN WEATHERS (Mayor, 1942-48)

Rupert Ryan Weathers was born in Wake County, near Wendell, in 1897. He attended high school in Zebulon.

He attended Wake Forest College and graduated from the Medical College of Virginia in Richmond, Va. Weathers practiced medicine in the Knightdale community for 32 years.

He married Josephine Woodson in 1926. They had one child, Sue Weathers Wilder.

Weathers died in 1968. He was a well-loved "country doctor."

JOHN CARLISLE STALVEY

(Mayor, 1948-49)

John Carlisle Stalvey was born in Roxboro in Person County. He graduated from high school in Tabor City and graduated in 1934 from Lambuth College in Jackson, Tenn.

He came to Knightdale on Aug. 20, 1939, as pharmacist at Knightdale Drug Co.

Stalvey married Larue Weathers in June 1944. They are the parents of one child, Ruth Gale Gardner. Mr. and Mrs. Stalvey moved to 801 N. First Ave. Extension in 1949; since that property was outside the city limits of Knightdale at that time, Stalvey had to resign as mayor during the second year of his term.

Stalvey was paid a salary of \$5 a month as mayor.

EUGENE FIELD HARPER

(Mayor, 1949-62, 1964-76)

Eugene Field Harper was born in Laurel, which is now Louisburg. He attended Gold Sands High School and graduated from Campbell College in 1930. In 1942 he went back to college at North Carolina State College in Raleigh to study for a tool machinist degree.

His first job was as a service station attendant in Wake Forest. After coming to Knightdale, he worked at Robertson & Keith General Merchandise Store. He went to work with American Machinery Foundry as a test machinist in 1952.

Harper married Lillian Robertson of Knightdale in 1935. They were the parents of three sons, Jutson, Charles and Wayne. Lillian Harper died in 1979. Harper married Lois Faison Holifield in 1982.

Harper died in 1984.

ASHLEY WILDER

(Mayor, 1962-64)

Ashley Wilder was born in Wake County in 1909. He has always lived in Knightdale and graduated from Knightdale High School.

Wilder has had a number of occupations. He has farmed, worked as a clerk in a grocery store, owned and operated a grocery store, owned and operated a salvage company, and owned and operated a wood-burning stove business.

Wilder married Lona Eddy. They were the parents of three sons, Barry, Steve and Landon.

WILLIAM A. WILDER JR.

(Mayor, 1976-present)

William A. Wilder Jr. was born in Wake County in May 1934. He is a lifelong resident of Knightdale. He graduated from Knightdale High School and from North Carolina State College.

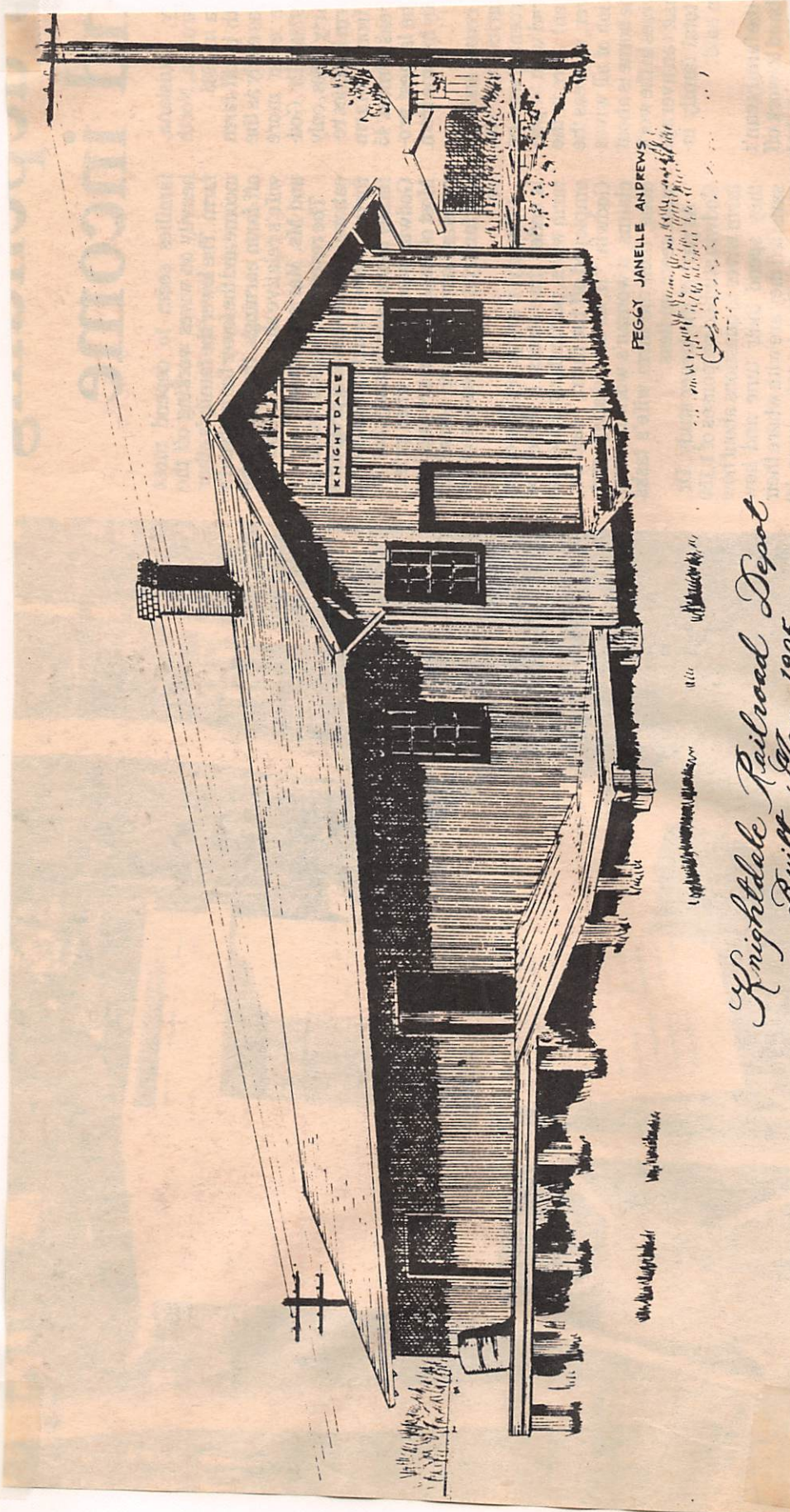
Wilder managed Caviness farm and later went to Winston-Salem as a county agent. He taught at N.C. State College for two years. He worked for the N.C. Department of Agriculture and was assistant agriculture commissioner for eight years.

He is now president of Wilder's Nursery Inc. in Knightdale. He is also executive director of both the N.C. Association of Nurserymen and the N.C. Landscape Contractors Association.

Wilder married Libby Jean Jones in April 1955. They have two daughters, Barbara and Deborah.

WAKE CO, NC - KNIGHTDALE

The Zebulon Record THUR 8 OCT 1987 Zebulon, NC



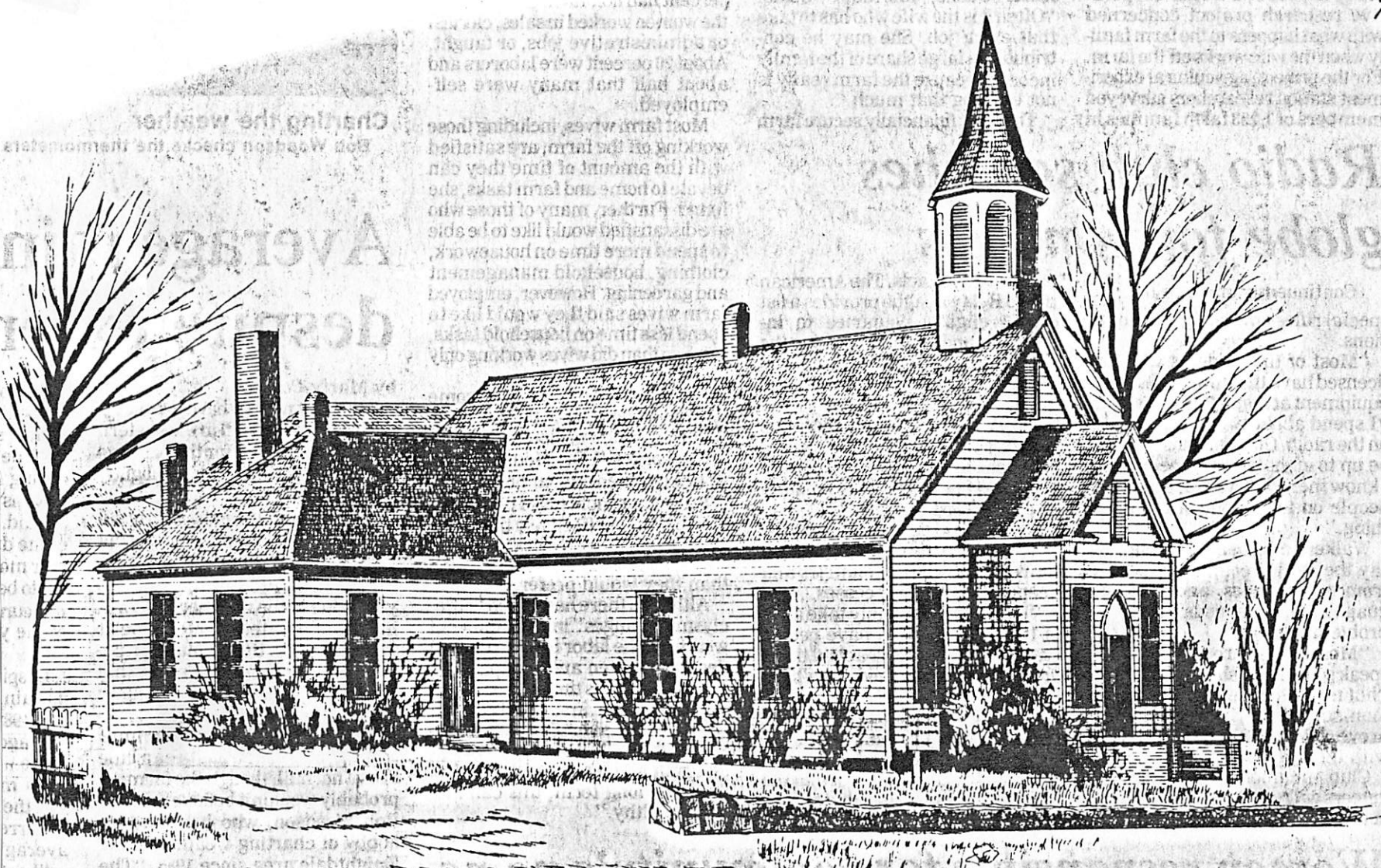
PEGGY JANELLE ANDREWS

*Knightdale Railroad Depot
Built May 1905*

Knightdale scenes

Prints
by
Peggy
Janelle
Andrews,
a member
of the
Knightdale
Heritage
Council

X



PEGGY JANELLE ANDREWS

Peggy Janelle Andrews

Old Knightdale Baptist Church

Erected in early 1900's

○ *The Zebulon Record* THUR 20 OCT 1988 Zebulon, NC

Midway plantation preserves a part of Knightdale history

By John Parnell

Over the past few years, Knightdale has been transformed from a quiet agrarian community into a rapidly developing part of one of the leading high-tech research areas of the United States.

There is a danger in such change, most notably in the effects upon a community's heritage. Vital links to the past can sometimes be ignored or discarded as a community marches toward its promising future.

Yet approximately two miles west of Knightdale, on the north side of U.S. 64, lies the Midway Plantation, one part of Knightdale's past that shows little sign of fading into history. For the past 140 years, it has been owned by the descendants of one family — the Hintons — passing from generation to generation, each of whom has regarded the care and preservation of the house as a great responsibility.

The Hintons became one of the first families to settle this area when Col. John Hinton was granted large tracts of land along the Neuse River by Lord Granville in the 1730s. Part of the land was in the section of Johnston County that was combined with parts of Cumberland and Orange counties to form Wake County in 1771.

For a time, the Hintons were the largest landowners in eastern Wake County, and it was from the Hintons that the Knight family purchased the land that eventually became Knightdale.

Midway was built in the 1840s by Col. Hinton's grandson, Charles Lewis Hinton, who was treasurer of North Carolina from 1839-43 and 1845-52. Upon completion of the house in 1848, Charles gave it as a wedding gift to his son, David Hinton II, and David's new wife, Mary Boddie Carr, sister of Gov. Elias Carr. Since the house was situated between two other Hinton plantations — the Oaks, about three miles south, and Beaver Dam, about two miles northeast — it was sensibly named Midway.

Like many other antebellum plantations, Midway was built in the Greek revival design. The main house is a three-bay frame structure, with chimneys rising at either end of the low-hipped roof; the facade is accentuated by a projecting portico with Doric columns and topped by a balustrated deck. The floor plan, using symmetrically arranged rooms that open onto a wide central hall, is also common to other plantations.

Yet Midway also has several progressive features not so common amongst other plantations of that period. Most notably, Midway was the first house in Wake County to have running water. This was achieved by pumping water (either by slaves or perhaps by a windmill that no longer stands) into a holding tank over the kitchen behind the house. The water then flowed by natural gravity through pipes into the house.

The house also contains many closets for that time (most houses used wardrobes), and it had built-in cabinets in the pantry where food was brought into the house from the kitchen so that it could be kept

warm before serving. Another distinct feature is that all of the chimneys were built inside the exterior walls.

Several of the outbuildings of the plantation complex still remain: the school, which drew schoolboys from other plantations; the doll house; the carriage house; the overseer's office; and the old kitchen. There is evidence that some of these buildings predate the main house by 20 years or more. Several outbuildings, including the slave quarters and the smokehouse, have been torn down. Gen. William T. Sherman's troops claimed two of the outbuildings during the Civil War — the gin house and the cotton press — when they marched upon Raleigh in 1865.

During much of the War Between the States, Midway was unaffected. However, when Sherman marched through the Carolinas in early 1865,

that changed. Maj. David Hinton was serving in the Confederate Army, and only women, children and slaves were at Midway when stragglers from the Fifteenth Corps under the command of Gen. John Logan fell upon the plantation. One soldier cut a portrait of Mary Carr out of its frame, plunged his bayonet through it and rode through the house waving it over his head. Adding insult to injury, the soldier then used the portrait as a saddle blanket.

But a slave from Midway later found the portrait at another plantation where the soldiers were camping, and he asked them if he could have it. He returned it to Midway, where it was not too much the worse for its ordeal, except for one crease running down the middle of Mary Carr's face, another running along

the bottom of her chin, and the bayonet slash in one of the upper corners. The painting was restored in 1968 by Mr. and Mrs. Charles Silver Sr., but the bayonet mark is

still visible upon close inspection.

Not all of the family possessions fell into such rough hands, however. The slaves were able to save the Hintons' silver service by burying it under an uprooted tree. And the family's good coins were locked in a tin box and thrown into a pond, to be retrieved later after the soldiers had left.

David and Mary Hinton had three children: Charles, Jane and Mary. Charles married Bessie Cain of

Hillsborough and lived at Midway until his death in 1930. His daughter, also named Bessie, married Henry Sprague Silver, and they had three children: Charles Hinton Silver Sr., Henry Sprague Jr. and Mrs. Godfrey Cheshire Jr.

After her husband's death at an early age, Bessie Hinton Silver and her children moved into Midway with Mary Hilliard Hinton, who was

living there alone. Miss Hinton, a noted genealogist, writer and formidable Victorian lady, never married; she lived at Midway until 1961 when she died at age 92. The house then passed to her great-nephew, Charles Hinton Silver Sr., the late husband of the current owner, Betty Howison.

Charles Silver Sr. began an ex-

tensive renovation of Midway upon his inheritance. He converted the porch and bath on the bottom floor into a modern kitchen and family room, installed a bath on the second floor in what was originally a linen closet, and made kitchen cabinets from pine planks removed from the attic floor.

Upon Silver's death in 1979, the house was inherited by his wife, Bet-

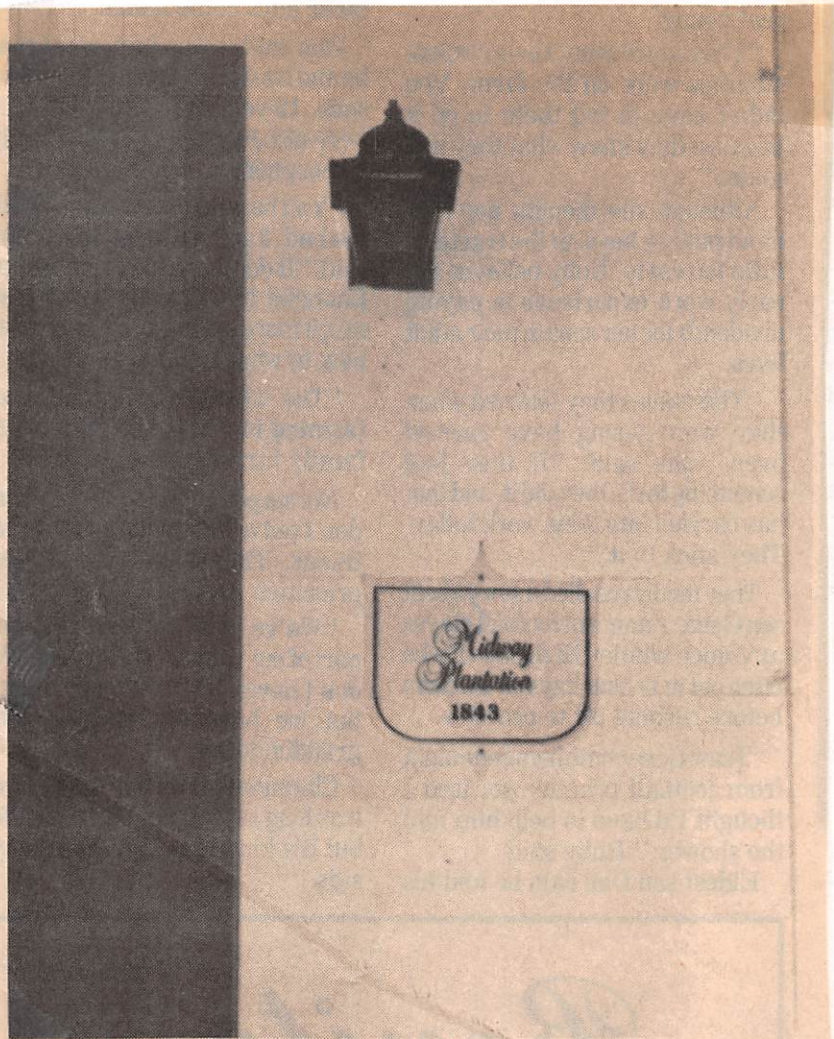


Photo by Douglas Hamm

The sign on the front door of the Midway Plantation notes that it was established in 1843

ty, and his son, Charles Hinton Silver Jr. From 1979 until 1983 (when Betty Silver married Robert C. Howison Jr.), Mrs. Howison occupied part of the old schoolhouse. From 1980 to 1985, Charles Silver Jr., his wife, Kay, and their three children lived in the main house.

The main house and the schoolhouse are currently being rented.

Though Midway has been one of the few historical constants during Knightdale's development, it has

not been completely unaffected by progress. Some years back, when Mary Hilliard Hinton and Bessie Silver lived at Midway, they fought a staunch but unsuccessful battle to prevent the state from cutting down a row of old oaks when U.S. 64 was widened. According to the family, Miss Hinton had to leave on the day the oaks were cut down.

Recently, similar problems again arose to threaten Midway. One of the proposed routes for the outer

loop of the Raleigh beltline would put the expressway very close to the main house. While the main house at Midway is on the National Registry of Historic Places and is thus protected, several of the outbuildings would have to be relocated or torn down to accommodate the highway, according to Mrs. Howison. However, with the recent initiatives to have the outer loop's intersection with U.S. 64 located east of Knightdale, the chances are

greater that Midway will this time escape unscathed.

In its nomination to the National Registry of Historic Places, Midway is called "one of the best preserved plantations in North Carolina." The credit rests solely with the Hintons and their descendants. Their care and dedication have assured Knightdale that even as she moves into whatever future awaits her, she will always have a reminder of what she was.



The population of Knightdale was 352 when this photo of the Midway Plantation was taken in 1940

*History preserved
at Midway plantation*



Photo by Douglas Hamm

The parlor room contains some of the Midway Plantation's original furniture

○ Notes of RPU/SSU NC. Visit 29 NOV - 17 DEC 2001
Re Knightdale Baptist Church Cemetery
16) 8 DEC 2001 (SAT).

- Inspected Cemetery at Knightdale Baptist Church on Poole Road. There was 1 stone with a middle initial "U" - could be UPCHURCH. The headstone was "CARPENTER" - 4 FOOTSTONES
 - △ ARCHIE L. CARPENTER 9 SEP 1907 - 4 MAY 1953
 - △ ANNIE F. CARPENTER 9 SEP 1908 - 2 DEC 1991
 - △ WILLIAM H. CARPENTER 20 APR 1880 - 11 MAY 1970
 - △ REBECCA U. CARPENTER 13 JUL 1877 - 7 APR 1943
 - △ ↳ = UPCHURCH ??

Otherwise no upchurch noted - walked over the entire cemetery

- △ NOTE: I find no profiles for a Rebecca U that would fit the person above born 13 JUL 1877 - nor do I spot a Rebecca U age about 3 years on the 1880 Wake Co, NC census - Women - will create a set of profiles for all eventualities - RPU 13 JAN 2001

Crossfile in individual profiles and also at the Knightdale Baptist Church Cemetery

Interment.net

Cemetery Transcription
Library

[What's New](#) | [Search Records](#) | [Browse Cemeteries](#) | [Publish Transcription](#) | [Cemetery Blog](#) | [Partners & Links](#)

[Home](#) > [United States](#) > [North Carolina](#) > [Wake](#) > [Knight Cemetery](#)

Knight Cemetery Knightdale, Wake County, North Carolina

Old Knight Rd. Knightdale NC

Lat: 35° 48' 31"N, Lon: 78° 28' 20"W
Saint Matthews Township



Click photo to enlarge

Contributed by Shirley Olson, Oct 04, 2006 [shirley32olson@yahoo.com]. Total records = 9.

From the intersection of Knightdale Blvd. (Hwy. # 64 East) & Old Knight Rd. (SR 2049), take Old Knight Rd. which runs northeast. Go .6 mi. to the cemetery on the right, directly across from Knightdale High School. There is no good place to park but there is a shoulder in front of the school where you can park with care.

The cemetery is almost hidden in the woody growth and easy to miss. A flight of steps goes up a small incline to the wrought iron enclosed cemetery. An obelisk engraved "Knight" is surrounded by graves. It is neat and tidy, no longer in use, and about 40' X 40" in size.

I transcribed from all existing headstones on Oct 04, 2006.

- Shirley Olson

Hilliard, Bettie Knight, b. 31 Dec 1871, d. 3 Oct 1953

Knight, C. Taylor, b. 16 Oct 1847, d. 30 Dec 1922

Knight, Carrie, b. 3 Jan 1891, d. 8 Jan 1891, dau. o. Dr. J.H. II & Ada A. Knight

Knight, Mary Ann, b. 28(?)Jan 1819, d. 2 Jul 1891, w. o. P. H. Knight

Knight, Noel W., b. 26 Nov 1881, d. 7 Aug 1911

Knight, Peter H., b. 2 Apr 1818, d. 10 Mar 1895

Phinney, Clarence E., b. 1880, d. 1950

Phinney, Mary Knight, b. 1896, d. 1976

Weathers, Mary H., b. 14 Aug 1864, d. 2 Nov 1948, dau. o. Peter & Mary H. Knight

Misc:

1 Funeral home marker, unreadable

1 Unreadable stone

Interment.net

Cemetery Transcription
Library

[What's New](#) | [Search Records](#) | [Browse Cemeteries](#) | [Publish Transcription](#) | [Cemetery Blog](#) | [Partners & Links](#)

[Home](#) > [United States](#) > [North Carolina](#) > [Wake](#) > [Hinton Cemetery](#)

Hinton Cemetery Knightdale, Wake County, North Carolina

0 Knightdale Blvd. Knightdale, NC *

Lat: 35° 47' 42"N, Lon: 78° 32' 06"W



Click photo to enlarge

Contributed by Shirley Olson, Apr 09, 2006, Last edited Jun 13, 2006
[shirley32olson@yahoo.com]. Total records = 5.

Located on Hwy #64 East (New Bern Ave.) on the south side of the road immediately after crossing the Neuse River from the west into Knightdale, this abandoned cemetery is slated to be disinterred and the remains reinterred in Oakwood Cemetery, Raleigh, NC. The small cluster of graves is located on a 20.88 acre parcel owned by Parkway Properties Group LLC, and zoned "Heavy Commercial".

There is a driveway into the property and the cemetery is immediately visible on the right. It is in very poor shape and has been partially excavated in preparation for the planned move. There are 10 graves, of which 4 headstones were partially readable.

I walked the cemetery and recorded what was readable on Apr 05, 2006. All remaining graves are unmarked. Additional info. from Paul Hartje, descendant.

- Shirley Olson

Hinton, J. H., no readable dates, home made stone, Believed to be John Hinton
Hinton, Mary, b. Jun 1766, d. 9 May 1813, dau. o. John & Pherebee Hinton,
"Sacred to the memory of Mary" "Stone erected at the req. o. her dau. Ann
Willis Mordecai"

Hinton, P. H., no readable dates, stone broken, Believed to be Pherebee Hinton
Hinton, W., Believed to be Willis, d. 1806, s. o. Maj. John Hinton, home made
stone

Lane, D., no dates, may be Dorothy, dau. o. Mary Hinton

Misc:

Memorial stone indicating burial elsewhere, "In memory of Col. J. Hinton"

*Wake Co. Real Estate Records gives 0 Knightdale Blvd. as the address, but it is more familiarly known as Hwy. #64 east.

Interment.net

Cemetery Transcription
Library

[What's New](#) | [Search Records](#) | [Browse Cemeteries](#) | [Publish Transcription](#) | [Cemetery Blog](#) | [Partners & Links](#)

[Home](#) > [United States](#) > [North Carolina](#) > [Wake](#) > [Bethlehem Baptist Cemetery](#)

Bethlehem Baptist Cemetery Wake County, North Carolina

Poole Rd. & Bethlehem Rd
Knightdale NC

Lat: 35°37'33"N, Lon: 78°49'18"W
Saint Matthew Township

Contributed by Shirley Olson, Sep 25, 2003
[shirley32olson@yahoo.com]. Total records = 381.

From Raleigh Beltline Exit # 15, take Poole Rd. (SR # 1007) east and go 5.4 miles to the cemetery on the southwest corner of Poole Rd. & Bethlehem Rd. (SR # 2049). You can drive into the cemetery.



[Click photo to enlarge](#)



[Click photo to enlarge](#)

This cemetery is owned and maintained by the Bethlehem Baptist Church in Knightdale. The church is directly across the road at 8400 Poole Rd.

The cemetery is in excellent condition, with lush grass neatly mowed, very clean and well cared for. It is full of fine headstones lovingly inscribed. It was a pleasure to walk and record.

From Wake County land records: The cemetery contains 2.54 acres and is owned by the church. There is room for more burials.

I surveyed this cemetery and recorded from tombstones on Sep 12, 2003.

- Shirley Olson

Adams, David Henry, b. 19 May 1894, d. 25 Feb 1962
Adams, Dorsey Lee, b. 22 Aug 1920, d. 21 Jan 2002, Cpl US Army WW 2
Adams, Lela Morris, b. 28 Dec 1902, d. 30 Jan 1994
Andrews, Edward A., b. 21 Feb 1905, d. 1 Sep 1964
Andrews, Joseph Alan, b. 10 Dec 1961, d. 25 Aug 2000, USN
Andrews, Joseph E., b. 7 May 1931, d. 6 Jun 1933, s. o. Mr./Mrs. Edward Andrews
Andrews, Joseph L., b. 6 Sep 1915, d. 8 Apr 1995
Andrews, Meta E., b. 12 Oct 1913, d. 17 Apr 2001
Andrews, Mildred T., b. 5 Jun 1917, d. ????
Bailey, Kenneth Harold, b. 1 Nov 1920, d. 6 Jan 2003, T/Sgt US Army ww 2

Bailey, Minnie Hunnicutt, b. 1885, d. 1940, w. o. Percy Bailey
Bailey, Percy E., b.1885, d. 1934
Bailey, Ronda J., b.6 Nov 1968, d. 7 Aug 1985
Bailey, Ruby Hicks, b. 25 Sep 1910, d. 17 Jan 1984
Bailey, Willie Percy, b. 2 Aug 1908, d. 20 May 1985
Baker, Grey P., b. 4 May 1927, d. ????, "Mama"
Baker, Spruill M., Sr., b. 16 Nov 1920, d. 28 Mar 2002, Tec 5 US Army WW 2, "Daddy"
Banks, Infants, b/d, 23 Jun 1987
Banks, Sara Michelle, b/d, 6 Oct 1988
Batson, Eugene B., b. 1884,d. 1958
Batson, Louise L., b. 1889, d. 1981
Beach, Faye Gardner, b. 2 Nov 1937, d. 8 Mar 1996
Beach, William Earl, b. 27 Dec 1933, d. 2 Jan 2003, Cpl US Army
Best, Mary Ann Kelly, b. 9 Dec 1932, d. 18 Jun 1990
Best, Robert Wayne, b. 29 Jan 1949, d. 9 Jun 1996
Best, Wallace Hughes, b. 18 Aug 1925, d. ????
Bradford, No name, b/d 1949, s. o. Edward & Grace W. Bradford
Branch, Walter O., b. 15 Feb 1875, d. 14 May 1932
Breland, Pearl C., b. 1909, d. 1967
Bridges, Beulah Roberts, b. 16 Oct 1910, d. 19 Feb 1987
Bridges, Wilton, b. 30 Aug 1910, d. 11 Dec 1917, s. o. J. L. & Mamie Bridges
Broadwell, Bonnie Louise Tyndall, b. 10 Nov 1925, d. ????
Broadwell, Deen E., b. 22 Dec 1927, d. 10 Nov 1976, w. o. Henry J. Broadwell
Broadwell, Graham Edward, b. 25 Oct 1922, d. 12 Oct 2000
Broadwell, Henry Jesse, b. 20 May 1928, d. 21 Apr 1996,Cpl US Army Korea
Broadwell, Joe Obie, b. 14 Dec 1893, d. 20 Mar 1984
Broadwell, Joseph Worth, b. 23 May 1921, d. 31 Oct 1998, S/sgt US Army WW 2
Broadwell, Kittie Ruby Wall, b. 28 Sep 1901, d. 5 Mar 1936, w. o. J. O. Broadwell
Broadwell, Ruby Kathleen Davis, b. 8 Aug 1902, d. 9 Dec 1974, w. o. J. O. Broadwell
Bullard, Laverne Phillips , b. 7 May 1942, d. 6 Dec 2000
Bullock, Charles David, b. 11 Jul 1927, d. 15 Oct 1995
Bullock, Ernestine Vinson, b. 28 Jun 1927, d. 17 Nov 2001
Butler, Ronald Carl, b. 29 Oct 1957, d. 30 Aug 1998
Butler, Tammy Gower, b. 18 Oct 1963, d. ????, w.o. Ronald Butler, m. 23 Apr 1998
Byrd, Dillion, b/d 1993
Cagle, No name, b/d 1949, s. o. Johnny & Jutsie Cagle
Carle, Richard O., b. 14 Jul 1944, d. ????
Carle, Sandra F., b. 28 Nov 1941, d. 15 Jan 2001, w.o. Richard Carle, m. 18 Jun 1966
Carpenter, Annie F., b. 9 Sep 1908, d. 2 Dec 1991
Carpenter, Archie L., b.9 Sep 1907, d. 4 May 1953
Carpenter, Eula B., b. 1895, d. 1969
Carpenter, Henry G., b. 1886, d. 1974
Carpenter, J. Rudolph, b. 4 Dec 1932, d. 17 Jul 1994, mason
Carpenter, Rebecca U., b. 13 Jul 1877, d. 7 Apr 1943
Carpenter, Roxie W., b. 12 Jul 1936, d. ????, Eastern Star
Carpenter, Thomas H., b. 17 Jun 1959, d. 19 Jun 1959
Carpenter,William H., b. 20 Apr 1880, d. 11 May 1970
Casey, William Walter, b. 8 Jan 1934, d. 2 Feb 2003, A1c USAF

Caudle, Bertie, b. 18 Jul 1912, d. 15 Jan 1994
Caudle, George, b. 1 Mar 1885, d. 15 Feb 1964
Caudle, Ida M., b. 3 Sep 1917, d. ????
Caudle, James J., b. 5 Oct 1923, d. 2 Oct 1995, mason
Caudle, Josephine P., b. 26 Aug 1925, d. ????, w.o. James Caudle, m. 7 May 1949
Chappel, Bettie W., b. 4 Oct 1917, d. ????
Chappel, Douglas, b. 7 Jun 1933, d. 16 Mar 1941
Chappel, Linwood N., b. 12 Aug 1909, d. 22 Oct 1997
Chappell, Billy, b. 7 Sep 1925, d. 15 Feb 2001, Pfc US Army Korea
Clark, Emma J., b. 1880, d. 1933
Clark, G. Morris, b. 27 Sep 1902, d. 10 Oct 1978
Clark, Mary J., b. 15 May 1906, d. 15 Dec 1979
Clark, No Name, inf. dau. o. William & Emma Clark
Clark, Onie Mae Wyrick, b. 10 Apr 1920, d. ????
Clark, Roberta W., b. 24 Jan 1929, d. 18 Feb 1983
Clark, Wallace G., b. 24 Nov 1929, d. 9 Dec 1993
Clark, William T., b. 1866, d. 1937
Clark, William Venoyd, b. 19 Jun 1908, d. 7 Oct 1989
Clifton, Cary Robert, Jr., b. 22 Jan 1945, d. 9 Feb 1945
Clifton, Cary Robert, b. 11 Nov 1912, d. 12 Mar 1986
Clifton, Lola Tart, b. 13 Dec 1921, d. ????
Clifton, Elizabeth Ann, b/d 2 Jan 1942
Cook, Ivey Wilder, b. 4 Jan 1892, d. 17 Apr 1963
Cook, Peter G., b. 16 Jun 1890, d. 7 Oct 1964
Creech, Efird W., b. 26 Sep 1923, d. 19 Mar 1987
Creech, Frances R., b. 31 Jan 1927, d. 2 Dec 1996
Crocker, Bradley S., b. 16 Feb 1954, d. ????
Crocker, Gale N., b. 18 Aug 1956, d. 23 Feb 2003
Dement, Helen Myrick, b. 26 Jan 1917, d. 12 Feb 1994
Dement, Russell Weldon, b. 18 Mar 1912, d. 28 Jun 1993
Denton, Jack, b. 15 Jan 1923, d. 12 Sep 1995
Dobbs, Ralph Campbell, b. 13 Oct 1932, d. 11 May 2002, Sp 3 US Army
Douglas, Jasper Grady, b. 30 Jun 1927, d. 15 Mar 2002
Douglas, Josie Woodward, b. 1 Aug 1931, d. ????
Dove, Francis Bernard, b. 1909, d. 1998
Dove, Maybelle Wall, b. 1908, d. 1986
Driver, Ashleigh Joann, b/d, 19 Mar 1994, dau. o. Ernest & Teresa Driver
Early, J. Odell, b. 9 Oct 1908, d. 5 Jun 1998
Early, Kathleen Knott, b. 5 May 1912, d. 26 Dec 1989
Edwards, Bertha M., b. 1902, d. 1927
Edwards, Florence P., b. 2 Aug 1880, d. 25 Apr 1958
Edwards, John W., b. 8 Jan 1874, d. 24 Mar 1969
Ellen, Bennie W., b. 22 Feb 1911, d. 22 Sep 1966
Ellen, Pattie Wall, b. 25 May 1912, d. 16 Jul 1999
Everett, Preston H., b. 1912, d. 1974
Ferrell, David M., b. 23 Sep 1909, d. 8 Nov 1986
Ferrell, Mildred W., b. 2 Sep 1910, d. 4 May 1999
Forehand, Mamie Smith, b. 30 Oct 1932, d. 30 Apr 1992
Gay, Flora Leigh Johnson, b. 3 Jun 1914, d. ????
Gay, Leonard William, b. 28 Jun 1913, d. 4 Feb 1902
Glover, L. J. "Jack", b. 29 Dec 1909, d. 10 Nov 1987
Glover, Lurla M., b. 10 Sep 1912, d. 9 Jul 2002
Glover, William D., b. 4 Nov 1928, d. 15 Nov 1985

Gower, Barbara H., b. 20 May 1931, d. 16 Jul 1989
Gower, Yancey Dee, b./d. 27 May 2002, s. o. Brian & Karen Gower
Gray, Brenda Shearin, b. 20 Feb 1951, d. ????
Gray, Gary Wilson, b. 15 Feb 1949, d. 26 Jul 2002
Griffin, Betty Jean, b. 25 Jan 1961, d. 12 Jul 1984
Griffin, John William, b. 5 Jan 1872, d. 19 Jun 1959
Griffin, Lucie A. Wilder, b. 31 Aug 1874, d. 2 Dec 1955, w. o. J. W. Griffin
Griffin, Timothy William, b.10 Jan 1956, d. 31 Mar 1997
Harris, Leon Milton, Col., b. 20 Jan 1918, d. 27 Apr 1986, US Army WW 2
Korea Viet Nam
Harris, Virginia, b/d. 8 Apr 1988, dau. o. Byron & Peggy Harris
Harrison, Arthur Bryant, b. 1885, d. 1947
Harrison, D. B., b. 22 Oct 1861, d. 18 Nov 1952
Harrison, David B., b. 12 Jun 1917, d. 13 Aug 1985
Harrison, Dena Cannady, b. 1897, d. 1956
Harrison, Edward B., b. 2 Mar 1890, d. 22 Dec 1919
Harrison, Elizabeth Wilder, b. 28 Apr 1866, d. 20 Jan 1930, w. o. D. B.
Harrison
Harrison, G. A., b. 22 Jul 1892, d. 24 Nov 1929
Harrison, Leon E., b. 12 Mar 1912, d. 17 Apr 1960
Harrison, Leslie Montague, b. 1889, d. 1921
Hart, Edwin Lee, b. 7 Nov 1934, d. 26 Feb 2002, HMC USN Viet Nam Purple
Heart
Henry, Angela Michelle, b. 3 Jan 1972, d. 27 Feb 1989
Hicks, Hettie C., b. 30 Sep 1909, d. 14 Jul 1988
Hicks, Judy Myrick, b. 8 Nov 1945, d. ????, w.o. Larry Hicks, m. 6 Aug 1966
Hicks, Larry Wayne, b. 6 Oct 1945, d. 25 Nov 2002
Hicks, Mattie B., b. 7 Oct 1882, d. 6 Oct 1981
Hicks, Paul E., b. 10 Feb 1909, d. 17 Jun 1968
Hicks, Rommie E., b. 27 May 1882, d. 28 Feb 1929
Hine, Stephen Michael, b. 10 Feb 1957, d. 31 Jul 1990
Hinton, Rachel W., b. 1881, d. 1955
Hinton, William G., b. 1875, d. 1961
Hobbs, Edna May, b. 24 Apr 1904, d. 30 Jun 1930
Hodge, Betty Webster, b. 1942, d. 2001 (Poole FH)
Hodge, Deanna Renee, b/d 24 May 1964, dau. o. Phillip & Betty Hodge
Hodge, Deborah Doyle, b. 23 Dec 1953, d. ????, w.o. Jonathan Hodge, m. 11
Feb 1979
Hodge, Dorothy Williford, b. 4 Sep 1943, d. ????, w.o. Stanley Hodge, m. 18
Apr 1964
Hodge, Edward S., Jr., b. 28 Jan 1929, d. 10 Jan 1931, s. o. E. S. & Vera
Hodge
Hodge, Edward S., b. 4 May 1892, d. 29 Sep 1969
Hodge, Emmett W., b. 12 Dec 1906, d. 11 Jan 1972
Hodge, Florence B., b. 1865, d. 1939
Hodge, Glenn Ivey, b. 24 Jun 1917, d. 27 Apr 1985
Hodge, Grayson A., b. 1917, d. 1938, s. o. Nathan & Mabel Hodge
Hodge, Horace Lincoln, b. 18 Aug 1910, d. 17 Aug 1995, Pfc US Army WW 2
Hodge, Ida Nivens, b. 2 Jan 1925, d. 10 Nov 2001
Hodge, Irma Vinson, b. 26 Apr 1909, d. 8 Jun 1987
Hodge, Jasper H., b. 7 Jun 1908, d. 16 Jun 1923
Hodge, Jonathan Craig, b. 8 Jun 1948, d. 19 Dec 2002, Sp 5 US Army
Hodge, M. C., b. 1851, d. 1935
Hodge, Mabel H., b. 1883, d. 1978

Hodge, Minnie R., b. 1878, d. 1956
Hodge, Nathan Ivey, b. 1882, d. 1928
Hodge, Pete H., b. 1881, d. 1956
Hodge, Phillip E., Jr., b. 29 Aug 1965, d. 26 Aug 1997, s. o. Phillip & Betty Hodge
Hodge, Phillip Edward, b. 8 Jun 1939, d. 13 Nov 1999, Sgt US Army
Hodge, Robert Hester, b. 14 Sep 1918, d. 1 May 1995, USN
Hodge, Ruby S., b. 1 Apr 1911, d. 19 Oct 1976
Hodge, Stanley Wayne, b. 5 Oct 1937, d. 19 May 2001, AK 3 USN
Hodge, Thomas A., b. 29 Aug 1912, d. 16 Jun 1923
Hodge, Tobe, b. 1890, d. 1940
Hodge, Valeria Holder, b. 24 Oct 1890, d. 9 Dec 1949
Hodge, Vera Wall, b. 27 Apr 1903, d. 22 Jun 1994
Hodge, Winifred Marshall, b. 10 Sep 1925, d. ????, w. o. Robert Hodge, m. 17 Jan 1948
Hollifield, Viola H., b. 18 Feb 1904, d. 7 Apr 1987
Holmquist, Carl E., b. 1922, d. 1966
Holmquist, Rachel P., b. 1925, d. ????
Hopkins, No name, b/d 10 Jun 1949, dau. o. R. B. & Elaine Hopkins
Horton, Charles Ray, b. 18 Aug 1923, d. 12 Jun 1956
House, J Thomas, b. 1910, d. 1972
House, Lucille B., b. 1910, d. 2002
Johnson, Alton Perry, b. 12 Sep 1911, d. 30 Nov 1996
Johnson, Eulala Nowell, b. 5 Jan 1908, d. 5 Feb 2000
Jones, Albert Dee, b. 29 Apr 1909, d. 28 Feb 1998, S1 USN WW 2
Jones, Beatrice W., b. 15 Oct 1916, d. ????, w. o. Grover Jones, m. 29 Mar 1936
Jones, David G., b. 18 Feb 1952, d. 15 Aug 1986
Jones, Doris W., b. 1915, d. ????
Jones, Edith Gibert, b. 1925, d. 1928, dau. o. Esten & Cassie Jones
Jones, Grover C., b. 22 Apr 1913, d. ????
Jones, Lucy Q., b. 5 Jul 1887, d. 2 Jul 1947
Jones, Phillip Ray, b. 15 Feb 1942, d. 4 Oct 1996
Kass, Enid Hodge, b. 23 May 1920, d. 26 Jun 1992
Kilmer, Raymond Jay, b. 27 Aug 1952, d. 25 Oct 1996
Kirk, Alonza H., b. 26 Jan 1882, d. 25 Aug 1957
Kirk, Elsie Sealey, b. 13 Sep 1932, d. ????
Kirk, Erin Elizabeth, b. 25 Jun 1982, d. 9 Oct 1994
Kirk, Evelyn Marie, b. 18 Aug 1941, d. 17 Jul 1942
Kirk, Grover Elgin, b. 5 Jan 1916, d. 3 Aug 1993
Kirk, James Willis, Sr., b. 1912, d. 1993 (Poole FH)
Kirk, Lula Morris, b. 29 Nov 1892, d. 25 Oct. 1967
Kirk, Wilbur Plummer, b. 23 Mar 1914, d. 7 Jul 1993, BMI USCG WW 2
Kirk, William B., Jr., b. 21 Sep 1942, d. 21 Jan 1981
Knott, Annie Hester, b. 10 Feb 1853, d. 27 Oct 1934, w. o. J. M. Knott
Knott, D. Graham, b. 20 Jan 1899, d. 12 Nov 1970
Knott, Eva Harrison, b. 27 May 1896, d. 18 Feb 1984
Knott, Iddie Fuller, b. 3 Jan 1873, d. 26 Jan 1936
Knott, Iddie, b. 17 Jul 1916, d. 24 Jan 1922, dau. o. R. D. & Iddie Knott
Knott, John M., b. 29 Jul 1861, d. 25 Nov 1923
Knott, Joseph O/, b. 8 Oct 1908, d. 17 Apr 1986
Knott, Katherine B., b. 8 Jul 1938, d. 14 Mar 1974
Knott, Kimberly Anne, b. 14 Apr 1961, d. 23 Jan 1974
Knott, Myrtle C., b. 26 Sep 1905, d. 17 Aug 1976

Knott, Newman A., b. 26 Jan 1905, d. 4 Dec 1950
Knott, Placid B., b. 30 Jan 1907, d. 13 Dec 1993
Knott, Robert David, b. 17 Jul 1865, d. 19 Jan 1931
Knott, Robert Lee, b. 12 Oct 1896, d. 6 Feb 1978
Knott, Ruth P., b. 24 Dec 1912, d. ????
Knott, Thomas, b. 31 Aug 1827, d. 30 Mar 1910
Knott, William Benjamin, b. 1862, d. 1917
Krueger, Mollie Gardner, b. 22 Mar 1939, d. 13 Apr 2000
Lambeth, Patricia Kay, b. 23 Mar 1963, d. 17 Jul 1996
Lassiter, Alexander, b. 2 Feb 1864, d. 29 Jan 1943
Lassiter, Annie E., b. 18 Jul 1865, d. 24 May 1940, w. o. Alexander Lassiter
Lassiter, Robert M., b. 1 Oct 1934, d. 23 Jun 1983
Lee, David Battle, b. 21 May 1924, d. 26 Feb 1991, USN WW 2
Lee, Dorothy Ann J., b. 2 Aug 1933, d. 6 Mar 1993
Lee, Paul Timothy, b. 26 Aug 1957, d. 28 Oct 1995
Lee, Robert E., b. 30 May 1930, d. 9 May 1931, s. o. Mr./Mrs. S. W. Lee
Lewis, Charlie W., b. 25 Mar 1878, d. 22 Jul 1975
Lewis, Infant, b/d, 1926, s. o. Mr. & Mrs. C. W. Lewis
Lewis, No name, b. 24 Jun 1892, d. 16 Jun 1987, w.o. Charlie Lewis
Liles, J. C., b. 16 Jan 1928, d. 5 Aug 1999
Liles, Luther Calvin, Jr., b. 2 Oct 1913, d. 29 Dec 1995
Liles, Mamie Ann Todd, b. 9 May 1918, d. ????, w. o. Luther Liles, m. 25 Jan 1936
Lyman, Ezra, b. 9 Oct 1882, d. 17 Jul 1939
Martin, Betty W., b. 1846, d. 1936
Massey, Eula P., b. 13 Mar 127, d. ????
Massey, Milton P., Jr., b. 21 Oct 1921, d. 17 Jul 1997
Massey, W. F. "Frank", b. 26 Feb 1947, d. 30 Aug 1963
McNeill, Christine Goodwin, b.17 Nov 1920, d. 15 Mar 1990, w.o. James McNeill, m. 14 Feb 1942
McNeill, James Wingate, Sr., b. 14 Apr 1920, d. 3 Apr 1992
Medlin, Alonza T., b. 29 Aug 1860, d. 27 Mar 1925
Medlin, Sallie, b. 19 Jun 1875, d. 8 Jan 1942
Melvin, Mary Alice Clifton, b. 24 Jan 1943, d. 16 Jan 1991
Montague, Emmett, b. 2 May 1910, d. 30 Nov 1976
Montague, Iris M., b. 31 Oct 1919, d. 2 Mar 1990, w. o. Emmett Montague
Montague, Lessie Neil, b. 1885, d. 1969
Montague, Luthur P., b. 1886, d. 1959
Morgan, Clara Watkins, b. 15 Apr 1905, d. 6 Feb 1987
Morgan, Dorothy T., b. 15 Jan 1932, d. 26 Jan 1990
Morgan, Kermit Richard, b. 16 Jan 1907, d. 8 Jul 1974
Morgan, Richard O., b. 15 Feb 1929, d. ????
Myrick, Blois W., b. 12 Oct 1923, d. 17 Feb 1993
Myrick, Prior T., b. 1885, d. 1941
Myrick, Sarah J., b. 1891, d. 1955
Myrick, Thomas D., b. 14 Jan 1919, d. 22 Feb 1981
Nichols, Charles F., b. 1862, d. 1936
Nichols, Mary Agnes, b. 1872, d. 1958
Norton, Grady H., b. 18 Sep 1893, d. 24 Nov 1965
Norton, John Henry, b. 1920, d. 1984, US Army WW 2 Korea
Norton, Johnie E., b/d 30 Aug 1958
Norton, Mary E., b. 9 Jul 1900, d. 5 Apr 1993
Norton, Rose Marie, b. 16 Jan 1940, d. 31 Mar 2000
Oglesby, No name, b. 28 Jan 1939, d. 29 Jan 1939, s. o. C. A. & Margaret

Oglesby

Owens, Florence, b. 26 May 1913, d. 11 Mar 1999

Owens, Grady A., b. 26 Dec 1903, d. 3 Apr 1983

Parrish, No name, b/d 9 Mar 1968, beloved sons o. Jackson L. & Joann R. Parrish

Pearce, Gwyn Sanford, b. 18 Feb 1951, d. 10 May 1999

Pearson, Donna Jean, b. 11 Jan 1958, d. 15 Aug 1998

Pearson, H. Wayne, b. 1954, d. 2002 (Poole FH)

Pool, Drewery Wayne, b. 6 June 1931, d. 2 Mar 1932

Pool, Lillian B., b. 22 Jun 1890, d. 10 Mar 1981

Pool, Mallie G., b. 18 Mar 1896, d. 5 May 1971

Poole, No Name, b/d 6 Oct 1922, s. o. W. L. & Maybelle Poole

Pope, Bettie C., b. 3 Apr 1902, d. 15 May 1996

Pope, Leroy, b. 9 Feb 1895, d. 6 Jun 1961

Poythress, Edward A., b. 11 Jan 1911, d. 29 Jan 1990

Poythress, Rebecca H., b. 15 Oct 1913, d. ????

Pridgen, Marjorie Strickland, b. 2 Dec 1923, d. 21 Apr 1995, dau.

Raper, Sally Knott, b. 29 Sep 1948, d. 13 Feb 2002

Richardson, Lillie C., b. 15 Dec 1874, d. 27 Oct 1962

Richardson, Thelma Jean, b/d 1943, dau. o. Graham & Gertrude Richardson

Rogers, Barbara Randall, b. 6 Dec 1935, d. 17 Mar 1939

Sanford, Lucy Chambers, b. 7 Sep 1920, d. 1 Sep 2002

Sauls, James R., b. 6 May 1916, d. 14 Mar 1989

Sauls, Mavis B., b. 8 Jan 1918, d. ????, w. o. James Sauls, m. 12 Apr 1941

Schult, Frederick W., b. 16 Oct 1946, d. 23 Jul 1992, Major USAF Viet Nam

Schult, Sara L., b. 9 Aug 1945, w. o. Frederick Schult, m. 16 Aug 1970

Sealey, Flora B., b. 1869, d. 1905

Sealey, Molly, b. 1867, d. 1905

Sealey, Saul B., b. 1867, d. 1934

Secrest, Wilson M., Jr., b. 6 Feb 1941, d. 30 Nov 1996

Skipper, Virginia Hodge, b. 1908, d. 1929, and infant son

Skipper, William Edward, b. 1 Dec 1878, d. 3 Dec 1939

Smith, Agnes W., b. 23 Jun 1916, d. ????

Smith, Albert C., b. 11 May 1919, d. 4 Jun 1971

Smith, No name, b/d 17 Sep 1942, dau. o. Albert & Agnes Smith

Sparks, Arthur C., b. 2 Mar 1882, d. 7 Dec 1969

Sparks, Arthur Craten, b. 26 Jan 1916, d. 22 Jul 1998, Bm 2 US Navy WW 2

Sparks, Mabel M., b. 11 Oct 1891, d. 24 May 1979

Sparks, Pauline Spence, b. 23 Aug 1921, d. ????

Stewart, Rhonda Pearce, b. 25 Feb 1960, d. 16 Jul 1998

Stott, Cora Lee, b. 1908, d. 2002, w. o. Eddie Stott, m. 16 Jul 1927

Stott, Eddie M., b. 1896, d. 1984

Strickland, Aline Wall, b. 15 Feb 1926, d. 20 Nov 1995

Strickland, Berry Spright, b. 22 Nov 1935, d. ????, son

Strickland, Nona Hall, b. 27 Jul 1901, d. 6 Oct 1995, mother

Strother, Shelby R., b. 1937, d. 1986

Styles, Ira C., b. 1 May 1890, d. 14 Feb 1977

Styles, Ola B., b. 11 Oct 1898, d. 24 Mar 1948

Tapp, Brian Scott, Jr., b/d, 29 Sep 2000

Tapp, Jennifer Damron, b. 14 Jan 1977, d. 5 Oct 2000

Tapp, Timothy Scott, b. 5 Aug 1997, d. 8 Aug 1997

Tart, J. Frank, b. 23 Apr 1890, d. 25 Mar 1970

Tart, Leamon, b. 8 Feb 1928, d. 6 Feb 1997, SN USN WW 2

Tart, Pherby R., b. 9 May 1897, d. 15 Feb 1974

Tart, William Benton, b. 12 Apr 1926, d. 29 Apr 1964, Pfc US Army WW 2
Taylor, Donie Wall, b. 9 Apr 1911, d. 28 Dec 1989
Taylor, Willard A., b. 17 Jan 1905, d. 18 Nov 1982
Tilton, Betty R., b. 19 Apr 1936, d. ????
Tilton, Henry Joseph, Sr., b. 8 Oct 1931, d. 24 Nov 1979
Walker, Carl H., b. 8 Sep 1928, d. 18 May 1929
Walker, Hettie P., b. 8 Oct 1880, d. 28 May 1937
Walker, Willa G., b. 24 Apr 1916, d. 2 Dec 1927
Wall, Aaron Rollin, b. 19 Mar 1910, d. 22 May 1981
Wall, Bennett L., b. 1887, d. 1941
Wall, Charles Timothy, b. 12 Aug 1953, d. 16 Apr 1997
Wall, Cleona E., b. 1880, d. 1957
Wall, Colleen R., b. 9 Apr 1961, d. 25 Apr 1990
Wall, Eugene R., b. 28 Jun 1899, d. 16 Jul 1953
Wall, Evie H., b. 1894, d. 1937
Wall, Grace M., b. 14 Dec 1924, d. 22 Aug 2000
Wall, Henry J., b. 1875, d. 1958
Wall, Ida Joyce, b. 1924, d. 1958
Wall, Jesse D., Jr., b. 23 Apr 1939, d. 22 Feb 1971
Wall, Jesse D., b. 11 Oct 1899, d. 30 Jun 1989
Wall, Jessie Allen, b. 6 Aug 1979, d. 28 Nov 1981, "Our Son"
Wall, Jessie Dexter, b. 9 Mar 1983, d. 23 Apr 2002
Wall, Jessie Donald, b. 18 Aug 1957, d. 17 Aug 1999
Wall, Leola Long, b. 17 Aug 1915, d. 14 Nov 1975
Wall, Lottie C., b. 17 Sep 1907, d. 9 May 2000
Wall, Mary Pauline, b. 5 May 1911, d. 8 Jan 1997
Wall, No name, b/d 1940, s. o. Eugene & Viola Wall
Wall, Raeford Wilder, Sr., b. 9 Mar 1921, d. 13 Apr 2002, Cpl US Army
Wall, Sam, b. 27 Aug 1908, d. 16 Sep 1995
Wall, Terry Dean, b. 12 Jan 1960, d. 5 Jul 1963, s. o. Carl & Helen Wall
Wall, Thomas H., b. 1879, d. 1939
Wall, Tracy Lee, b. 1972, d. 1973
Warren, Cynthia Strother, b. 1957, d. 1993
Watkins, Charles Winston, b. 27 Mar 1882, d. 25 Nov 1926
Watkins, Erma Thompson, b. 30 Mar 1918, d. ????
Watkins, James Wilbur, b. 16 Dec 1943, d. 19 May 2000, AA USN Cuban Conflict
Watkins, Jesse Bernard, b. 4 Sep 1858, d. 30 Jul 1931
Watkins, John Wilkins, Jr., b. 19 Jan 1927, d. 12 Nov 1988, USN WW 2
Watkins, Otho Mod, b. 7 Sep 1907, d. 9 Jan 1985
Watt, Kathryn Broadwell, b. 28 May 1952, D. ????, w. o. Kenneth Watt, m. 21 Oct 1972
Watt, Kenneth Franklin, b. 23 Dec 1949, d. 6 Feb 2003, Sp 4 US Army
Webster, Hubert B., b. 14 Feb 1915, d. 19 May 1966
Webster, Sara F., b. 22 Jan 1919, d. 2 Apr 1984
Wells, Joel Everette, b. 14 Apr 1934, d. 2 May 1934
Wells, Lillie G., b. 8 Apr 1909, d. 22 Aug 1995
Wells, Vance D., b. 13 Apr 1898, d. 27 Aug 1950
Whitley, Lawrence Albert, b. 23 Jan 1941, d. 4 Feb 1982
Whitley, Lessie Well, b. 11 Oct 1903, d. 4 Dec 1986
Whitley, Owen R., b. 30 Nov 1894, d. 14 Jun 1967
Wilder, H. H., b. 1 Oct 1880, d. 2 Nov 1941
Wilder, Jane A., b. 1876, d. 1945, w. o. Henry Wall
Wilder, Larkin A., b. 16 Oct 1878, d. 12 Sep 1955

Wilder, Nora B., b. 9 Mar 1884, d. 22 Jul 1975
Williams, Edward V., b. 7 Jun 1932, d. 29 Mar 2001
Williams, Erastus David, b. 16 Nov 1905, d. 18 May 1979
Williams, Evelyn Gay, b. 15 Nov 1933, d. ????, w. o. Edward Williams, m. 15 Sep 1951
Williams, Lizzie Moore, b. 20 Oct 1912, d. 7 Oct 1984
Williford, Marshall T., b. 24 Sep 1921, d. 24 Nov 1979
Woodall, Katie Lynn, b/d 16 Jul 1964
Woodard, James H., b. 24 Apr 1936, d. 10 May 1936
Woodard, John A., b. 1877, d. 1955
Woodard, Leamon Brewer, b. 25 Jan 1918, d. 4 Apr 1997, Cpl US Army WW 2 Purple Heart
Woodard, Mary Lewis, b. 1918, d. ????
Woodard, Mildred Sparks, b. 28 Jan 1910, d. 27 May 2001
Woodard, Nettie B., b. 1878, d. 1950
Woodard, Paul Glenn, b. 8 Jun 1907, d. 3 Apr 1988
Yeager, Christine W., b. 7 Sep 1927, d. 17 Jul 1989

Misc:

There is a tablet set in the ground close to the road that is inscribed as follows:
"No farewell words were spoken, No time to say goodbye, You were gone before we knew it, Only God knows why. There are no dates or names.

Near the cemetery front there is a marker inscribed: "In memory of all our class members, Bethlehem Senior Men's Bible Class", 1 Jan 2003

More North Carolina Genealogy Records:

- [North Carolina Marriage Bonds, 1741-1868](#)
- [North Carolina Marriage Collection, 1741-2000](#)
- [North Carolina Death Collection, 1908-1996](#)
- [North Carolina Birth Index, 1800-2000](#)
- [North Carolina Census, 1790-1890](#)
- [State Census of North Carolina, 1784-1787](#)
- [North Carolina Taxpayers, 1701-1786](#)
- [North Carolina Will Abstracts, 1660-1790](#)