

SAPONY CREEK, NASH CO, NC

○ Appendix F. Rackley Family - A Southern Colonial Family
by Elsie Fretz Potter & Timothy Wiley Rackley - 1996

Appendix F was completely extracted by RPU
in the Spring of 2009. Profiles for the numerous
family members listed appear on a separate extract
sheet. The two main introductory paragraphs appear
below

APPENDIX F
RACKLEY-WARD-ADAMS-WINSTEAD CONNECTIONS

△ Willis Ward Jr.

Willis Ward Jr., born 23 April 1789, was the son of Willis Ward (b. ca. 1755, Norfolk Co., Va.) and Margaret Batchelor (b. ca. 1754, Norfolk Co., Va.), daughter of Stephen Batchelor (d. 1806, Nash Co., N.C.) and his first wife, Mary Manning (d/o William Manning of Virginia). Willis married Lucy Tucker, daughter of James Tucker Jr. (s/o James Tucker, a Nansemond Indian from Norfolk County, Va., and his wife Priscilla; Ref. 6) and Phereby Melton (d/o Zachariah Melton and Sarah Thomas). Recently acquired information on James Tucker agrees with the family tradition that Lucy, born 20 March 1791, was a Sioux Indian. A photograph of Lucy reveals the high cheekbones characteristic of Native Americans, Tucker is a prominent surname among members of the Siouan-speaking Saponi Tribe, and the Tuckers and the Rackleys were neighbors along Sapony Creek in Nash County, N.C. Willis and Lucy had eleven children (Ref. 7), all apparently born in Nash County. He died in Nash County on 29 September 1859. She was living with Sallie Ann and Wright Stephen Batchelor at the time of the 1870 census, but was not listed in 1880.

NOTE THAT THE
HOME OF ^ASSU
& HER MOTHER

△ NANCY ANNA MAKEW
VESTER WAS
OWN ^ASAPONY
CREEK IN
NASH CO, NC

△ Lott Adams

Lott Adams was the son of William Adams and Winifred Eidson. As a young man Lott went West with a group of people from Nash County. When the travelers reached the Mississippi River, they heard that the Indians were not friendly along their proposed route through Texas. Lott decided to turn back; the others kept going and were massacred. Upon his return to North Carolina, Lott learned that the young lady he had been courting was keeping company with another man. Lott soon found another woman to his liking. He and Charity Moody were married in Edgecombe County about 1847. He made a pie safe for his bride, and the handles on it came from the old mohair trunk he had hauled all the way to Mississippi and back.

Although Lott was not a young man when the Civil War broke out, he entered the Confederate Army. Once when he came home on leave, he heard the breathing of a child with diphtheria as he came up the front walk. He rushed inside, picked up little Arey, and laid her across his lap. All night he worked to clear her air passages, pulling mucus from her throat and throwing it upon the dirt floor of the cabin. By morning the crisis had passed, and Arey lived to see the birth of her great-grandchildren, including Eloise Fretz Potter, principal author of the Rackley book.

Born about 1827, Charity died in Nash County after giving birth to ten children. She was buried on the Lassiter Farm. Afterwards, Lott married Rildy Patterson, a widow. Late in life he moved to Florence, S.C., where he is buried.

TURKEY CREEK - WASH CO, NC ?

○ In the MAY, AUG, NOV ISSUES OF N. C. GEN. SOC JOURNAL 2008 Forest D. King authored articles on 4 generations of Stricklands starting with MATTHEW STRICKLAND 1648. The AUG issue gave details on the 9 children of Jacob Strickland in Aht 1715. It appears that some of these 9 children had a linkage to the Maccasin Creek Area of Wake/Franklin Co, NC. So a separate extract sheet is being prepared for each of the 9 - RTH 11 NOV 2008

I. Matthew Strickland 1648

A. Matthew Strickland 1648

1. Jacob Strickland
in Aht 1715 - An ancestor
of Sallaine (Sledge) Yeshurch
a. Child of Jacob

2. Sampson Strickland
in Aht 1724 - Also an
ancestor of Sallaine
(Sledge) Yeshurch

i. SOLOMON¹ STRICKLAND, born say 1739 in Isle of Wight County, Virginia. He married AMY PACE in Edgecombe County, North Carolina, on or after 19 September 1764.⁶² He and Amy were both still living in Madison County, Georgia, on 5 November 1813, when they executed a distribution of property to their children.⁶³ Solomon is first of record when he served as a chain carrier when Duncan Lamon's tract of land on the North prong of Turkey Creek was surveyed on 10 November 1762.⁶⁴ Solomon's marriage to Amy Pace is one of only two documented marriage dates in the first four generations of the Strickland family. Solomon managed several work crews in the 1760s, even though he apparently did not yet own land at that time. The date of his first land purchase is uncertain. He lived or had recently moved away from a property on the south side of Turkey Creek on 10 August 1778.⁶⁵ The description of this tract refers both to "Solomon's Spring Branch" and to "improvements where the sd. Solomon lived." He was "Solomon Sr." in a 1782 tax list, and he owned one hundred acres of property.⁶⁶ By 19 November 1787, he relocated to Wilkes County, Georgia, when he purchased 250 acres of land on Big Shoal Creek in Franklin County in the same state.⁶⁷ He and wife Amy sold this land as residents of Elbert County, Georgia, on 27 February 1795.⁶⁸ Solomon and Amy were original members of the Lystra Primitive Baptist Church as of 15 January 1803.⁶⁹ Solomon was in Madison County, Georgia, on 5 November 1813, when he gave land and property to his children after the death of Amy.⁷⁰

TURKEY CREEK - NASH CO, NC

○ In the MAY, AUG, NOV ISSUES OF N. C. GEN. SOC JOURNAL 2008 Forest D. King authored articles on 4 Generations of Stricklands starting with MATTHEW STRICKLAND b AHT 1648 The AUG Issue gave details on the 9 Children of Jacob Strickland b AHT 1715. It appears that some of these 9 Children had a linkage to the Moccasin Creek Area of Wake/Franklin Co, NC. So a separate extract sheet is being prepared for each of the 9 - RPH 11 NOV 2008
 → ANCESTOR OF SON

I. Matthew Strickland b AHT 1648

A. Matthew Strickland b AHT 1671

1. Jacob Strickland
 b AHT 1715 - An ancestor
 of Sallaine (Sledge) Yeshurch
 a. Child of Jacob

2. Sampson Strickland
 b AHT 1724 - Also an
 ancestor of Sallaine
 (Sledge) Yeshurch

vi. MARK STRICKLAND, born say 1749 in Edgecombe County, North Carolina. He married MARTHA (-?-) in Edgecombe County after 1768. He died in Nash County, North Carolina, after 6 August 1811.⁹⁸ Martha died after her husband signed his will. Mark is first of record as a witness in court on 8 December 1766.⁹⁹ He received a gift of 280 acres of land from his father on 25 November 1769.¹⁰⁰ He purchased land in two locations in Nash County. The first was a patent on the north side of Tosnet Swamp adjoining his own land, granted on 12 March 1779.¹⁰¹ Mark purchased the second on Turkey Creek on 7 October 1782.¹⁰² He was in Nash County for the 1790 federal census.¹⁰³ He continued to purchase land on Turkey Creek during the 1790s. He wrote his will in 1811, and he died by 27 November 1811, when it was proved.¹⁰⁴

TOSNET SWAMP- NASH CO, NC

○ In the MAY, AUG, NOV ISSUES OF N. C. GEN. SOC JOURNAL 2008 Forest D. King authored articles on 4 generations of Stricklands starting with MATTHEW STRICKLAND b AHT 1648. The AUG issue gave details on the 9 children of Jacob Strickland b AHT 1715. It appears that some of these 9 children had a linkage to the Moccasin Creek Area of Wake/Franklin Co, NC. So a separate extract sheet is being prepared for each of the 9 - RPH 11 NOV 2008
→ ANCESTOR OF SON

- I. Matthew Strickland b AHT 1648
A. Matthew Strickland b AHT 1671
1. Jacob Strickland
b AHT 1715 - An ancestor
of Sallaine (Sledge) Ysurch
a. Child of Jacob
2. Sampson Strickland
b AHT 1724 - Also an
ancestor of Sallaine
(Sledge) Ysurch

vi. MARK STRICKLAND, born say 1749 in Edgecombe County, North Carolina. He married MARTHA (-?-) in Edgecombe County after 1768. He died in Nash County, North Carolina, after 6 August 1811.⁹⁸ Martha died after her husband signed his will. Mark is first of record as a witness in court on 8 December 1766.⁹⁹ He received a gift of 280 acres of land from his father on 25 November 1769.¹⁰⁰ He purchased land in two locations in Nash County. The first was a patent on the north side of Tosnet Swamp adjoining his own land, granted on 12 March 1779.¹⁰¹ Mark purchased the second on Turkey Creek on 7 October 1782.¹⁰² He was in Nash County for the 1790 federal census.¹⁰³ He continued to purchase land on Turkey Creek during the 1790s. He wrote his will in 1811, and he died by 27 November 1811, when it was proved.¹⁰⁴

TURKEY CREEK - NASH CO; NC?

○ In the MAY, AUG, NOV ISSUES OF N. C. GEN. SOC JOURNAL 2008 Forrest D. King authored articles on 4 generations of Stricklands starting with MATTHEW STRICKLAND b. ABT 1648 The AUG issue gave details on the 9 children of Jacob Strickland b. ABT 1715. It appears that some of these 9 children had a linkage to the Moccasin Creek Area of Wake/Franklin Co, NC. So a separate extract sheet is being prepared for each of the 9 - RPH 11 NOV 2008

- I. Matthew Strickland b. ABT 1648
A. Matthew Strickland b. ABT 1671
1. Jacob Strickland
b. ABT 1715 - An ancestor
of Sallaine (Sledge) Gresham
a. Child of Jacob
2. Sampson Strickland
b. ABT 1724 - Also an
ancestor of Sallaine
(Sledge) Gresham

→ Δ v. MATHEW STRICKLAND, born say 1747 in Edgecombe County, North Carolina. His date and place of death remain unknown. Mathew made few appearances in the records. He received money from his father's 1788 will.⁹³ Mathew appears in the 1790 federal census next to his brothers.⁹⁴ He purchased one hundred acres of land on Turkey Creek in Nash County, North Carolina, on 5 March 1792.⁹⁵ He sold this tract to Lazarus Strickland on 2 February 1799.⁹⁶ He may have been the Mathew mentioned in his brother Elisha's estate inventory in December 1795.⁹⁷ From this point on, the presence of several other Mathew Stricklands from the next generation makes it difficult to distinguish one Mathew from another. There are no Mathew Stricklands in the Nash County 1800 federal census.

TURKEY CREEK - NASH CO, N

○ In the MAY, AUG, NOV ISSUES OF N. C. GEN. SOC JOURNAL 2008
 Forrest D. King authored articles on 4 generations of
 Stricklands starting with MATTHEW STRICKLAND b. AHT 1648
 The AUG issue gave details on the 9 children of Jacob
 Strickland b. AHT 1715. It appears that some of these 9
 children had a linkage to the Mocoson Creek Area
 of Wake/Franklin Co, NC. So a separate extract sheet
 is being prepared for each of the 9 - RPH 11 NOV 2008

- I. Matthew Strickland b. AHT 1648
 A. Matthew Strickland b. AHT 1671
 1. Jacob Strickland
 b. AHT 1715 - An ancestor
 of Sallaine (Sledge) Gyschurch
 a. Child of Jacob
 2. Sampson Strickland
 b. AHT 1724 - Also an
 ancestor of Sallaine
 (Sledge) Gyschurch

iii. ELISHA STRICKLAND, born say 1741 in Isle of Wight County, Virginia. He married a woman who remains unidentified by 1765 in Johnston County, North Carolina. He died in Wake County, North Carolina, after 23 February 1795.⁸² Elisha purchased seven hundred acres in Johnston County on both sides of Mocoson Creek at a branch of Little River on 22 July 1761.⁸³ A Joseph Strickland was a chain carrier when this patent was surveyed.⁸⁴ This Joseph was most likely Elisha's uncle. Elisha may have been the "Elijah Strickland" mentioned in the estate records of Robert Cade in Bute County on 3 June 1769.⁸⁵ Elisha lived in the part of Johnston County that became a part of Wake County in 1771. The county court appointed him a constable there on 3 September 1772.⁸⁶ He did not purchase any more land until the Revolutionary War period, when he bought quite a bit of land, including 640 acres on Turkey Creek in Nash County on the county line on 29 March 1780.⁸⁷ By 1785, he started disposing of his property in Wake County on Mocoson Creek by selling 117 acres to Jesse Bunn.⁸⁸ He served on a jury to locate a new road from near John Dunn's place to the Tarborough Road on 22 June 1787.⁸⁹ He wrote his will on 23 February 1795 in Wake County, and he died by September 1795, when it was proved.⁹⁰

SASSAFRAS BRANCH, NASH CO, NC

Subject: Map of Pace Lands in Franklin Co. NC

CC TO JAMES P. JONES
4 SEP 2008

From: Carla Tate <tategenie@hotmail.com>

Date: Sat. May 17, 2008 9:58 pm

To: Robert Philip Upchurch <phil@upchurchstory.com>

Look at

http://freepages.genealogy.rootsweb.ancestry.com/~rchr/p/pace/ncpaceland.html

Please keep me updated on your progress with your map

Carla Tate

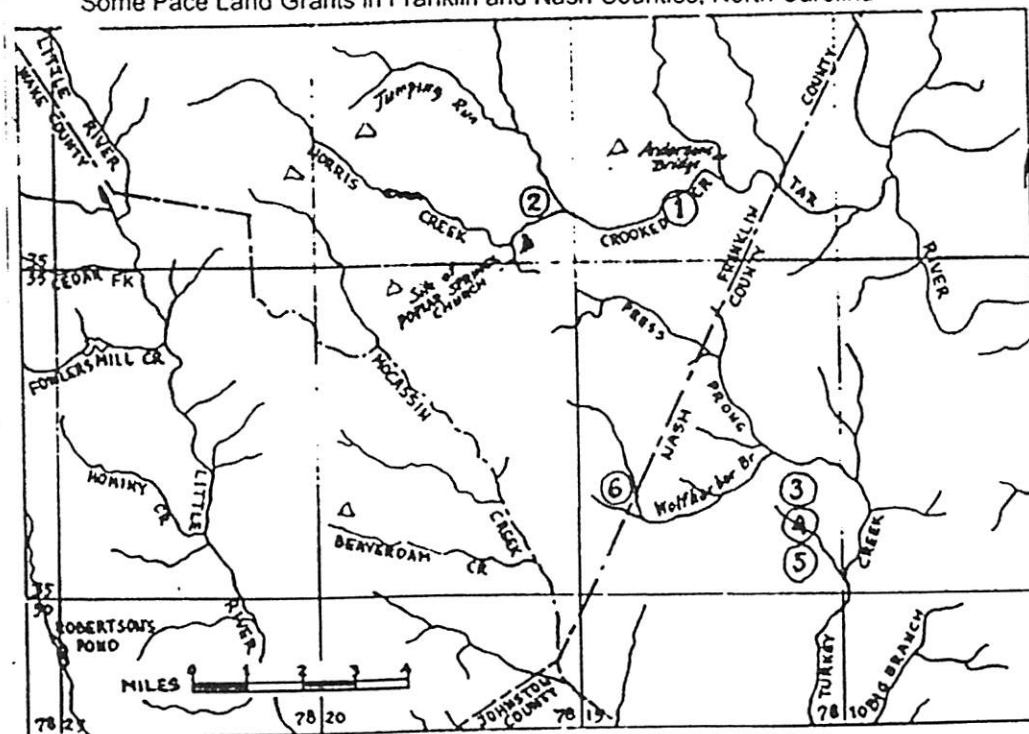
Some Pace Family Land Grants in North Carolina

Below is a map of the area in North Carolina referenced in the Pace Society of America publication. BULLETIN #25 (September 1973), edited by Marion Pace Mehrkens. The locations of the Pace land grants are identified by number.

To read the article accompanying the map, see Pace Society of America, BULLETIN #25 (September 1973).

- 1. -- William Pace -- 1 Oct 1753 -- 425 acres -- South side of Crooked Creek: corner and lines of Lodowick Alford. [FRANKLIN CO, NC]
- 2 -- James Pace -- 1 Nov 1752 -- 640 acres -- In the fork of Crooked Creek. "where the schoolhouse stood."
- 3 -- William Pace -- 9 Oct 1783 -- 140 acres -- South side of Turkey Creek, mouth of Sassafras Branch; lines of Lamond and Strickland. [NASH CO NC]
- 4 -- James Pace -- 26 Sep 1789 -- 95 acres -- On south side of Turkey Creek; corner and lines of Solomon Strickland.
- 5 -- William Pace -- 13 Jun 1786 -- 100 acres -- On the waters of Turkey Creek and Joes Branch; lines of Solomon Strickland and Samson Powell. Transferred to William Pace by deed of transfer from George Pace dated 13 Jun 1786. Sold 10 Oct 1795 to William Fore.
- 6 -- John Pace -- 16 Jan 1795 -- 100 acres -- On the fourth prong of Wolfharbor Branch, near the head of Bryant's Creek; lines of Massey, Lambert and Heartsfield. Sold in 1805 to Francis Anderson. [FRANKLIN CO, NC]

Some Pace Land Grants in Franklin and Nash Counties, North Carolina



From Pace Society of America, BULLETIN #25 (September 1973), Marion Pace Mehrkens, editor. Reprinted and scanned by permission (2 June 2000) by Rebecca Christensen.

54
17 MAY
2008

RP4
DOWNLOAD
28 MAY 2008
→

JOES BRANCH, NASH CO, NC

Subject: Map of Pace Lands in Franklin Co. NC

CC TO JAMES P. JONES
4 SEP 2008

From: Carla Tate <tategenie@hotmail.com>

Date: Sat. May 17, 2008 9:58 pm

To: Robert Philip Upchurch <phil@upchurchstory.com>

Look at

<http://freepages.genealogy.rootsweb.ancestry.com/~rchr/p/pace/ncpaceland.html>

Please keep me updated on your progress with your map

Carla Tate

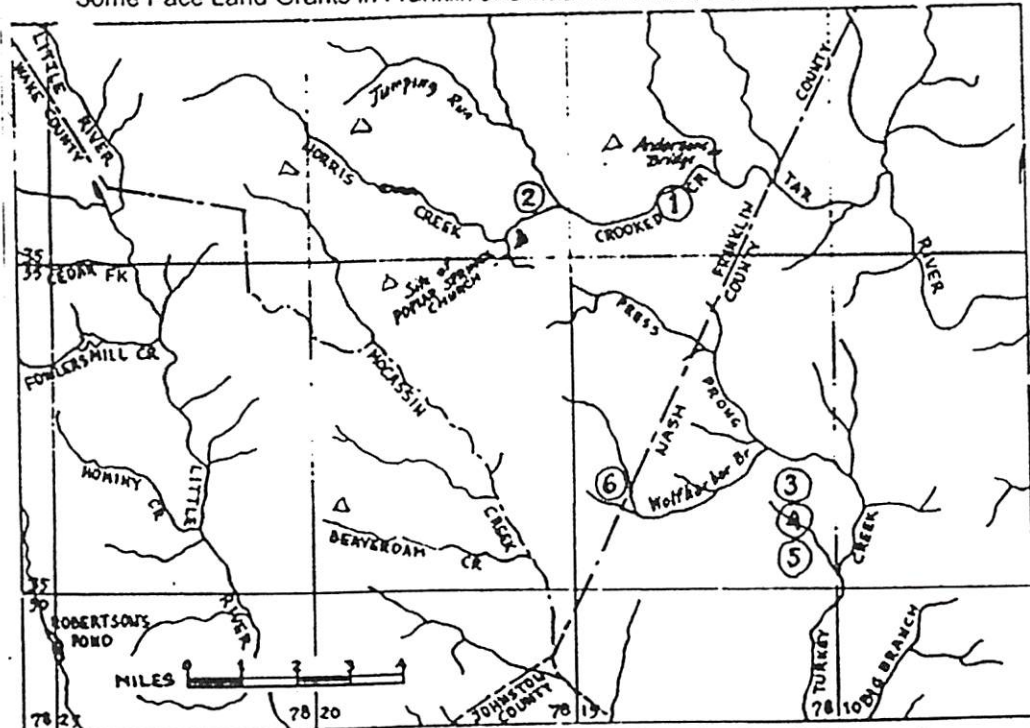
Some Pace Family Land Grants in North Carolina

Below is a map of the area in North Carolina referenced in the Pace Society of America publication. BULLETIN #25 (September 1973), edited by Marion Pace Mehrkens. The locations of the Pace land grants are identified by number.

To read the article accompanying the map, see Pace Society of America, BULLETIN #25 (September 1973).

- △△ 1. -- William Pace -- 1 Oct 1753 -- 425 acres -- South side of Crooked Creek: corner and lines of Lodowick Alford. FRANKLIN CO, NC
- △ 2 -- James Pace -- 1 Nov 1752 -- 640 acres -- In the fork of Crooked Creek. "where the schoolhouse stood."
- △ 3 -- William Pace -- 9 Oct 1783 -- 140 acres -- South side of Turkey Creek, mouth of Sassafras Branch; lines of Lamond and Strickland. NASH CO NC
- △ James Pace -- 26 Sep 1789 -- 95 acres -- On south side of Turkey Creek; corner and lines of Solomon Strickland.
- △△△△ 5 -- William Pace -- 13 Jun 1786 -- 100 acres -- On the waters of Turkey Creek and Joes Branch; lines of Solomon Strickland and Samson Powell. Transferred to William Pace by deed of transfer from George Pace dated 13 Jun 1786. Sold 10 Oct 1795 to William Fore. FRANKLIN CO, NC
- △ 6 -- John Pace -- 16 Jan 1795 -- 100 acres -- On the fourth prong of Wolfharbor Branch, near the head of Bryant's Creek; lines of Massey, Lambert and Heartsfield. Sold in 1805 to Francis Anderson.

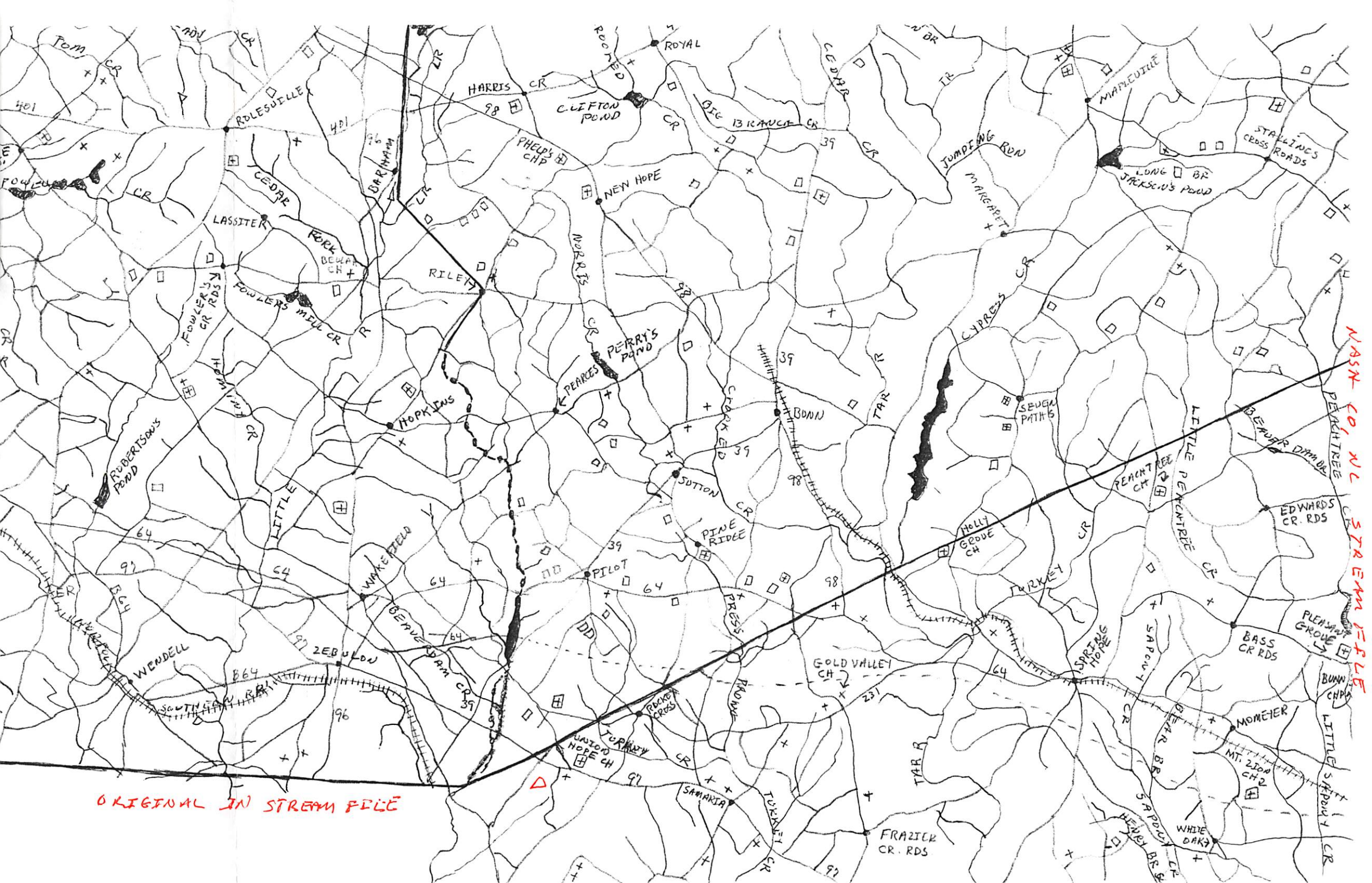
Some Pace Land Grants in Franklin and Nash Counties, North Carolina



From Pace Society of America, BULLETIN #25 (September 1973), Marion Pace Mehrkens, editor. Reprinted and scanned by permission (2 June 2000) by Rebecca Christensen.

(54)
17 MAY
2008

RPU
DOWNLOAD
28 MAY 2008
→



MASHN CO, NC
 PEACHTREE
 BEAVER DAM
 EDWARDS CR. RDS
 PLEASANT GROVE
 BUNN CHRP
 LITTLE SADDY CR
 STREAM FILE

ORIGINAL IN STREAM FILE

GOLD MINE BRANCH - NASH CO, NC

○ From "Farm Heritage and Humor & Memories of Gold Valley"
[Nash Co, NC] by Bruce Henry Woodard - LOCATIONS

1. Gold Mine Branch Pg 164 ← runs into Tar River south of Mehler Mill
2. Mehler Mill Pg 164
3. Woodard Family Cemetery Pg 165 ← SR 1137 "Froggers Road" - 100 Yds behind Henry Woodard Homeplace
4. Crooked Creek in Franklin Co, NC Pg 137
5. Rockfall Pg 83
6. Biddie Tar Creek Pg 117
7. Sanders Cemetery

STREAM FILE

SAPONY CREEK - NASH CO, NC

COPIES PLACED IN:

INDIAN FILE (COLORED)

STREAM FILE

SLEDGE FILE

