

REC'D
 14 MAY 2015
 NSG-MTN

Toll-Free: (877) 427-2665 • Fax: (573) 472-1608 • P.O. Box 238 • Morley, MO 63767 • WWW.ACCLAIMPRESS.COM

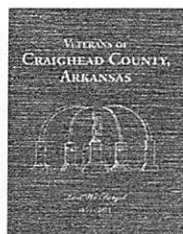
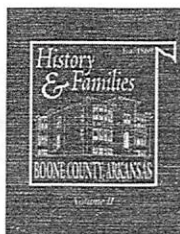
Acclaim Press has become a leading publisher of collectors' quality county and city histories, American history, and military history in addition to specialty titles ranging from sports to travel.

Acclaim Press has published history books for several counties throughout Arkansas, Illinois, Kentucky and

Missouri. The books are usually published in cooperation with the local county historical or genealogical society. They contain sections on the county, community, business, church, school, club/organization, and especially family histories, each section accompanied by many historical pictures to document the

foundation, growth and change of the community. These history books record the lineage of families along with treasured family photos. They are large, luxurious, coffee-table books, and many have already become collector's items upon publication. Best of all, there is *no cost* to publish one. Inquiries welcome.

▷ **ARKANSAS TITLES**



**Boone County, Arkansas
 History & Families, Vol. II**

Price: \$49.95
 ISBN: 978-1-935001-07-2
 Hardcover: 8½x11, 320 pages

**Cross County, Arkansas
 History & Families**

Price: \$59.95
 ISBN: 978-1-935001-91-1
 Hardcover: 8½x11, 432 pages

**Fulton County, Arkansas
 History & Families**

Price: \$69.95 (SOLD OUT)
 ISBN: 978-0-9798802-8-5
 Hardcover: 8½x11, 536 pages

**Randolph County, Arkansas
 A Pictorial History**

Price: \$49.95
 ISBN: 978-0-9773198-8-6
 Hardcover: 8½x11, 368 pages

**Veterans of Craighead County,
 Arkansas**

Price: \$59.95
 ISBN: 978-1-935001-67-6
 Hardcover: 9x12, 240 pages

**Brown County, Illinois
 History & Families**

Price: \$65.00
 ISBN: 978-1-938905-40-7
 Hardcover: 8½x11, 368 pages

**Calhoun County, Illinois
 Pictorial History**

Price: \$45.00
 ISBN: 978-1-938905-17-9
 Hardcover: 8½x11, 272 pages

**Cass County, Illinois
 History & Families**

Price: \$65.00
 ISBN: 978-1-935001-86-7
 Hardcover: 8½x11, 352 pages

**Christian County, Illinois
 History & Families**

Price: \$59.95
 ISBN: 978-1-938905-65-0
 Hardcover: 8½x11, 136 pages

**Gallatin County, Illinois
 Pictorial History**

Price: \$50.00
 ISBN: 978-1-938905-14-8
 Hardcover: 8½x11, 224 pages

**Hardin County, Illinois
 Past and Present, Vol. II**

Price: \$59.95
 ISBN: 978-1-938905-85-8
 Hardcover: 8½x11, 128 pages

**Illinois Historic Farms
 Honoring the State's
 Enduring Heritage of
 Family-Owned Farms**

Price: \$49.95
 ISBN: 978-1-942613-02-2
 Hardcover: 8½x11, 432 pages

**Jasper County, Illinois
 A Pictorial History**

Price: \$42.95
 ISBN: 978-0-979-0025-4-0
 Hardcover: 8½x11, 224 pages

▷ **ILLINOIS TITLES**



**Johnson County, Illinois
 Bicentennial Families**

Order: jcghs@gmx.com
 ISBN: 978-1-938905-04-9
 Hardcover: 8½x11, 224 pages

**Knox County, Illinois
 History & Families**

Price: \$54.95 (SOLD OUT)
 ISBN: 978-1-935001-15-7
 Hardcover: 8½x11, 192 pages

**Livingston County, Illinois
 Pictorial History**

Price: \$49.95
 ISBN: 978-1-938905-44-5
 Hardcover: 8½x11, 264 pages

**Massac County, Illinois
 History & Families**

Price: \$59.95
 ISBN: 978-1-938905-27-8
 Hardcover: 8½x11, 160 pages

**Montgomery County, Illinois
 History & Families**

Price: \$59.95
 ISBN: 978-1-938905-82-7
 Hardcover: 8½x11, 416 pages

**Pike County, Illinois
 History & Families**

Price: \$54.95
 ISBN: 978-1-938905-74-2
 Hardcover: 8½x11, 256 pages

**Pulaski County, Illinois
 Pictorial History**

Price: \$45.00
 ISBN: 978-1-938905-46-9
 Hardcover: 8½x11, 192 pages

**Putnam County, Illinois
 History & Families**

Price: \$55.00
 ISBN: 978-1-938905-61-2
 Hardcover: 8½x11, 224 pages

**Richland County, Illinois
 History & Families**

Price: \$60.00
 ISBN: 978-1-938905-21-6
 Hardcover: 8½x11, 304 pages

**Richland County, Illinois
 A Pictorial History**

Price: \$42.95
 ISBN: 978-0-9790025-2-6
 Hardcover: 8½x11, 224 pages

**Schuyler County, Illinois
 Family Histories**

Price: \$60.00
 ISBN: 978-1-938905-03-2
 Hardcover: 8½x11, 320 pages

**Schuyler County, Illinois
 Pictorial History**

Price: \$45.00
 ISBN: 978-1-935001-46-1
 Hardcover: 8½x11, 224 pages

**Stark County, Illinois
 History & Families**

Price: \$66.00
 ISBN: 978-1-938905-12-4
 Hardcover: 8½x11, 448 pages

**White County, Illinois
 A Pictorial History**

Price: \$42.95
 ISBN: 978-0-9790025-3-3
 Hardcover: 8½x11, 176 pages

**Whiteside County, Illinois
 History & Families**

Price: \$59.95
 ISBN: 978-1-938905-41-4
 Hardcover: 8½x11, 304 pages

In 1840 Census of Gallatin County, Illinois there are 5 Upchurch families listed, and all belong to the Samuel Upchurch line:

Curran Precinct.

p.30 line 8. JOHN UPCHURCH: 4th child of Samuel. 4129

p.30 line 8. SAMUEL UPCHURCH the "old man" born ~~12/06~~ 11 Sept 1772. 4320

p.30 line 13. JOHN A. UPCHURCH . this has to be Jonathan A. Upchurch the 10th child of the "old Samuel". I find only three records on Jonathan after the death of his father in 1841. He signs the deed for sale of his father's farm. He signs a petition and is a purchaser at a sale. Then I find no more information on him at all. In the 1840 census listing: The John A. Upchurch family is: 4129

males un/5=1, 5/10= 1, 20/30=1. 4326

females 5/10= 1, 10/15= 1, 15/20=1 , 20/30=1, 40/50= 1. There are evidently more people in this home than the husband ,wife and children.

P. 30 line 21 THOMAS L. Upchurch is the 9th child of "old Samuel Upchurch. 4325

p.48 line 9. DAVID UPCHURCH- 3rd child of "old" Samuel Upchurch. My direct ancestor. (MAA) 4319

1850 ->

In the 1850 Census of Saline County- I can account for all the Upchurch families listed with the exception of one- William Upchurch- who is listed south of Harrisburg- not with the descendants of Samuel Upchurch- who stay in Harrisburg, Galatia, & Eldorado, Ill. area. I have already sent you the information on this William Upchurch- (He was one of those that I could not place- I have an idea that he belongs in some way to the Johnson/Williamson Co. Ill. Upchurchs as his 3 children by his first wife- listed in his will , all married in Johnson Co. and I believe Union Co. Ill. 4129

.....

9 July 1982.

Dear Phil, I hope this helps you in some way. It took me some time to check out my notes on the Upchurch families. You realize that the Census records that have been re- microfilmed by the Government are much more distinct than the old ones we read years ago. It is difficult to believe there is such a difference. But most our libraries have the old ones.

Congratulations on the new grandchild. Aren't they something to brag about. I honestly believe my one and only one is the smartest child in the country, but if I don't think ^{it} who will? Anyway we love ours to death. She has us curled around her little finger.

If ^many way I can help you any more let me know. Glad you have about straightened out the brother of "old" Samuel in Chatham Co. N.C.

As ever,

Mary Afton

Mary Afton



ILLINOIS GENEALOGY

REC'D 14 MAY 2015

NGS-MAN

This guide contains a sample of The Newberry Library resources on this topic. Consult a reference librarian, the library web site, or catalog for more details.

VITAL RECORDS

Illinois Statewide Death Index, Pre-1916.

Illinois Statewide Death Index, 1916 - 1950.

Available online at

<https://www.cyberdriveillinois.com/departments/archives/databases/home.html>

Death index by name: Illinois deaths [1916-1947].

Springfield, Illinois: Illinois Dept. of Public Health, 2000. Call # Local History Ref Microfiche 1153.

Marriage record index. 4th edition. Springfield, Illinois: Illinois State Archives & Illinois State Genealogical Society, 1992. Call # Microfiche 1144. Not comprehensive. Consult catalog for counties and years covered. See also the Illinois Statewide Marriage Index, 1763 – 1900 at

<https://www.cyberdriveillinois.com/departments/archives/databases/home.html>

CENSUS

U.S. population schedules 1820-1880, 1900-1940 (complete). Entire census available on microfilm and online through Ancestry.com (1940 online only). Microfilm Soundex indexes for 1880, 1900, 1910, 1920. Printed statewide indexes 1820-1860 available.

Illinois state census. 1825, 1830, 1835, 1845, 1855, 1865. See the State Census binder at the 2nd floor reference desk for call numbers and reel numbers. Note: Only heads of household are listed by name in the state census schedules. Index is only available for 1855.

PERIODICALS

Illinois State Genealogical Society Quarterly. Volume 1 (1969)- currently received. Call # Local History Ref F536.I177 (2nd floor open shelf).

LAND RECORDS

Public domain sales land tract record listing. Springfield, Illinois: Illinois State Archives Division, 1984. Call # Microfiche 623. These are only the original land sales made by the federal government, and thus are largely limited to the period of early settlement and development in any given county. See also **Public Domain Land Sale Records** database at <https://www.cyberdriveillinois.com/departments/archives/databases/home.html>

LOCAL HISTORIES AND GENEALOGICAL SOURCE MATERIAL

Consult the online catalog under the subject headings for the county of interest. Sometimes there may also be materials listed under a subject heading for a village, town or city. For Chicago and Cook County research, consult the Chicago Genealogy pathfinder.

MAPS AND GAZETTEERS

Adams, James N. **Illinois Place Names.** Springfield, Illinois: Illinois State Historical Society, 1989. Revised edition. Call # Local History Ref F539.A3 1989 (2nd floor open shelf).

Boyd, Gregory A. **Family Maps of ... Illinois.** Norman, OK: Arphax, c2005-. Call # Local History Ref classified separately by county (2nd floor open shelf). Specify county name.

Callary, Edward. **Place Names of Illinois.** Urbana: University of Illinois, c2009. Call # Local History Ref F539 .C25 2009 (2nd floor open shelf).

Conzen, Michael P., James R. Akerman, David T. Thackery (compilers). **Illinois County Landownership Map and Atlas Bibliography and Union List.** Springfield, Illinois: Illinois Board of Higher Education, 1991. Call # Local History Ref GA421.C66 1991 (2nd floor open shelf).

Library of Congress Land Ownership Maps. Call # Microfiche 583. For listings of Illinois maps consult **Land Ownership Maps: A Checklist of Nineteenth Century United States County Maps in the Library of Congress.** Washington: Library of Congress, 1967. Call # Local History Ref Z6027.U5 U54 (2nd floor open shelf).

Maps of Illinois Counties in 1876 . . . reprinted from Illustrated Historical Atlas of the State of Illinois published by the Union Atlas Co., Chicago. Knightstown, Indiana: Mayhill, 1972. Call # G1406.G46 1876 U5 (atlas counter, 2nd floor General Reading Room).

BETHEL PRIMITIVE BAPT. CH. RALEIGH, SALINE CO., IL

EXCERPTS RE THE JOHN U. III / SAMUEL U. SUBCLAN FROM NOV 2016 INPUTS BY DESCENDANT DEBORAH (MILLIGAN) DANIELS - RPU 28 NOV 2016

I. JOHN U. III - HEAD OF UPCHURCH CLAN NO (OF 2)

△ R. SAMUEL U - WAS A GUNNER - NEW ORLEANS - WAR OF 1812

△ I. ELIZABETH U b 30 NOV 1814 (WILSON CO., TN) d 11 JUN 1874 (RALEIGH, SALINE CO., IL) - LEFT LEBANON TN 1819

△ MD 19 NOV 1840 (SALINE CO., IL) CHARLES THOMPSON (JOSEPH?) B PA. HE ABANDONED FAMILY ABOUT 1850 SHORTLY AFTER TWINS WERE BORN - NO FURTHER INFO (NOTE: COURT IN SALINE CO IN 1852 APPROVED REQUEST OF ELIZABETH TO "BOUND OUT" HER CHILDREN

△ Q. MARY ELLEN THOMPSON b 23 AUG 1841 (RALEIGH, SC, IL) d 7 MAY 1939 (LASALLE CO., IL) (BUR. HICKORY HILL CEM. BROUGHTON, HAMILTON CO., IL)

△ MD 13 OCT 1859 (SALINE CO., IL) MARTIN VANBORN MATHIS b 1829 (?) d 1915 (?) (BUR. - AS WIFE)

△ A. NANCY ELIZABETH MATHIS "LIZIE" b 22 JUL 1860 (?) d 11 MAY 1907 (BROUGHTON, IL) MD 1888

△ (HAMILTON CO., IL) J. T. BARKER

△ (J) FLORENCE ANN BARKER

b 3 DEC 1882 (HAMILTON CO., IL) d 5 SEP 1921

(WILLIAMSON CO., IL) MD 26 JUL 1913 (WATERTOWN, IL)

△ ULYSSES SHERMAN THOMPSON "U.S."

△ (A) ESTHER THOMPSON 1917 - 2007 MD (1ST) NOV 1938

△ FREEMAN V. BEASLEY (KIA WWII GERMANY)

△ MD (2ND) 1950 (?) JOHN A. MILLIGAN PUT 87TH ILL INF

△ (U) LANA ARLENE BEASLEY 1942-2012

△ MD 1963 (?) ALAN FOX

△ (2) DEBORAH MILLIGAN b 1951 MD 1975 (IL)

△ DAVIS DANIELS

△△ (G) DERRIS DANIELS (H) DANA DANIELS

△ II. REBECCA MATHIS. SHE AND MOTHER MARY ELLEN

△ WERE FOUNDING MEMBERS OF BETHEL PRIMITIVE

△ BAPTIST CHURCH - SALINE CO., IL.

ROBERT

△△△ III W. IV. MATHIS "WELL" b. MAR. MATHIS. AL. MATHIS MD 4 JUL 1865 (SALINE CO., IL) MARRIED -

△ b. HENDERSON THOMPSON - ALSO ABANDONED WIFE - SALINE CO, IL

△ c. DAVID THOMPSON (TWIN) b 30 JUN 1850 (SALINE CO., IL)

△ d. JONATHAN THOMPSON (TWIN) b 30 JUN 1850 (SALINE CO., IL)

RPU NOTE: OLIVE MORROW IN UPCHURCH STORY PG 244 REPORT MET MD 6 MAR 1867 WMA. JENNINGS - DEBORAH SAYS NOT



This guide contains a sample of The Newberry Library resources on this topic. Consult a reference librarian, the library web site, or catalog for more details.

VITAL RECORDS

Illinois Statewide Death Index, Pre-1916.

Illinois Statewide Death Index, 1916 - 1950.

Available online at

<https://www.cyberdriveillinois.com/departments/archives/databases/home.html>

Death index by name: Illinois deaths [1916-1947].

Springfield, Illinois: Illinois Dept. of Public Health, 2000. Call # Local History Ref Microfiche 1153.

Marriage record index. 4th edition. Springfield, Illinois: Illinois State Archives & Illinois State Genealogical Society, 1992. Call # Microfiche 1144. Not comprehensive. Consult catalog for counties and years covered. See also the Illinois Statewide Marriage Index, 1763 – 1900 at

<https://www.cyberdriveillinois.com/departments/archives/databases/home.html>

CENSUS

U.S. population schedules 1820-1880, 1900-1940 (complete). Entire census available on microfilm and online through Ancestry.com (1940 online only). Microfilm Soundex indexes for 1880, 1900, 1910, 1920. Printed statewide indexes 1820-1860 available.

Illinois state census. 1825, 1830, 1835, 1845, 1855, 1865. See the State Census binder at the 2nd floor reference desk for call numbers and reel numbers. Note: Only heads of household are listed by name in the state census schedules. Index is only available for 1855.

PERIODICALS

Illinois State Genealogical Society Quarterly. Volume 1 (1969)- currently received. Call # Local History Ref F536.I177 (2nd floor open shelf).

LAND RECORDS

Public domain sales land tract record listing. Springfield, Illinois: Illinois State Archives Division, 1984. Call # Microfiche 623. These are only the original land sales made by the federal government, and thus are largely limited to the period of early settlement and development in any given county. See also **Public Domain Land Sale Records** database at <https://www.cyberdriveillinois.com/departments/archives/databases/home.html>

REC'D 14 MAY 2015 - NGS MTN

LOCAL HISTORIES AND GENEALOGICAL SOURCE MATERIAL

Consult the online catalog under the subject headings for the county of interest. Sometimes there may also be materials listed under a subject heading for a village, town or city. For Chicago and Cook County research, consult the Chicago Genealogy pathfinder.

MAPS AND GAZETTEERS

Adams, James N. **Illinois Place Names.** Springfield, Illinois: Illinois State Historical Society, 1989. Revised edition. Call # Local History Ref F539.A3 1989 (2nd floor open shelf).

Boyd, Gregory A. **Family Maps of ... Illinois.** Norman, OK: Arphax, c2005-. Call # Local History Ref classified separately by county (2nd floor open shelf). Specify county name.

Callary, Edward. **Place Names of Illinois.** Urbana: University of Illinois, c2009. Call # Local History Ref F539 .C25 2009 (2nd floor open shelf).

Conzen, Michael P., James R. Akerman, David T. Thackery (compilers). **Illinois County Landownership Map and Atlas Bibliography and Union List.** Springfield, Illinois: Illinois Board of Higher Education, 1991. Call # Local History Ref GA421.C66 1991 (2nd floor open shelf).

Library of Congress Land Ownership Maps. Call # Microfiche 583. For listings of Illinois maps consult **Land Ownership Maps: A Checklist of Nineteenth Century United States County Maps in the Library of Congress.** Washington: Library of Congress, 1967. Call # Local History Ref Z6027.U5 U54 (2nd floor open shelf).

Maps of Illinois Counties in 1876 . . . reprinted from Illustrated Historical Atlas of the State of Illinois published by the Union Atlas Co., Chicago. Knightstown, Indiana: Mayhill, 1972. Call # G1406.G46 1876 U5 (atlas counter, 2nd floor General Reading Room).

PARRISH, FRANKLIN CO, IL RPU

~~RPU~~
for RPU
8-31-91

Dad Harry Ray W. was
born on a farm 5-6 miles SSE
of Parrish Cave Franklin Illinois.

7-25-94 from
Earl Eugene Upchurch*
Rt 4
Benton IL 62812

→ Rec'd in file 30 AUG 1994
Richard Dean U. & RPU

* 3^d cousin, once removed

PARRISH

The village of Parrish began January 11, 1881, when twelve lots were laid out north of "the point where the Benton and Eastern Railroad crosses the west line of the northeast quarter of the northwest quarter of section six" in Cave Township. The village was named for Doctor Carter, a Civil War trained physician who had a reputation of burning off skin cancers with a white hot iron. There were no anesthetics in those days and it is said that one could hear the screams of the patients half a mile from the farm home office of the physician.

The Benton and Eastern Railroad was built in 1879 and a station was set up where the railroad crossed the public road. This station was named Parrish for the post office a mile north where the public road crossed the Shawneetown-Kaskaskia Trail. The village of Cartersburg was built around this station.

Later the hamlet was called Charleysville for Charles Dixon who bought livestock and produce for shipping to St. Louis and Chicago by rail. It officially became Parrish when the Parrish store and post office was moved into the village. This

post office was named for Baxton Parrish, a prominent Methodist minister of that part of Franklin County.

At its height of prosperity, Parrish had a population of over five hundred. It had a post office, three general stores; owned by John N. Miller, Fitts and Hudgens and Iyer and Joplin; three family groceries, two saloons, a barbershop, sawmill, grist mill, and stock pens from which livestock was shipped. Charles Dixon bought strawberries, apples, peaches and wild blackberries, and shipped them to the city by the carloads. Much poultry, cream and eggs were shipped from Parrish. The village was the leading wheat shipping center in the county. Jones Brothers established a dry goods store in Parrish but moved it to Benton during the First World War. In this period of prosperity four passenger trains and two freights stopped at Parrish every day.

There were two churches in the village: a Methodist and a Baptist. In those early days these churches had some feverish arguments over the Calvin and Arminian theologies. Nothing was ever settled but each side went his way more convinced that he was right and the other was wrong.

The Parrish School was held in a one room schoolhouse. In the year 1906 Clay Ing taught school here. There were sixty pupils that year. Mr. Ing later became County Superintendent of Schools.

Logan Jones wrote a book on the history of the neighborhood. A few copies of this book still exist.

The coal boom missed Parrish. No mine was sunk in the vicinity. Farm produce soon were shipped by truck when the paved highways were built. Trains were cut off. The railroad service was discontinued and in 1968 the tracks were taken up.

The real paralyzing blow came in the afternoon of March 18, 1925. Then the worst tornado in American history struck Missouri, Illinois and Indiana. It demolished Parrish. Not one building in the village escaped destruction or damage. Most of the hamlet was never rebuilt. One store building and the Baptist Church were all the public buildings rebuilt. The post office was discontinued April 7, 1925 but it was reestablished July 30 of that year. It was finally closed August 31, 1933.

Today the Baptist Church still stands. It has a good membership and an active Sunday School. The store building was used to store hay and grain for several years. It is owned by Paul Ray, who holds public auctions in it every Friday evening. Eighteen of the more than one hundred houses can be seen strewn along the road. In the countryside one can still see orchards of peach and apple trees. Parrish, the thriving shipping center, is gone never to return but the ghost of its past lives on in the memories of a few older people who knew her in her glory.

COPIES MADE FOR

RICHARD DEAN LTR 30 AUG 1994
TO RPU

GEOGRAPHICAL FILE ↑

JOHN MILTON U, I FILE

HARRY RAY U FILE

From "Ghost Towns of Southern Illinois"
by Glenn J. Sneed
printed in 1977

HELEN SUTT LIND

IL

MICHAEL ENTERPRISES
P. O. BOX 387
Wentzville, MO 63385

=====

17 FEB 1996

HELEN SUTT LIND, EDITOR
FACTS & FINDINGS

FRANKFORT AREA GENEALOGY SOCIETY
2000 EAST ST. LOUIS STREET
WEST FRANKFORT, IL 62896

Dear Ms Lind,

A copy of an article about the estate sale of Samuel
Upchurch appeared in Vol III #3 (Date?) of your publication.
This was sent by Eugene A. Bedard of Austin, TX to Belton, TX.
Gail Ferguson of Galesburg, IL who kindly sent a copy
on to me. This document is of use to me as I
track all Upchurches and their descendants. Details
on the Upchurch Bulletin are enclosed. I have a great
deal of information on Samuel Upchurch and his
descendants.

I might like to reproduce the above article in
the Upchurch Bulletin and am writing to ask your
permission to do this. Proper credit would be given

I am puzzled about the contents page related to
the above article (copy enclosed). It shows page 83
and David Upchurch whereas the actual article shows
page 63 & Samuel Upchurch?
with Appreciation!

☺ sincerely yours
Phil Upchurch

[ROBERT PHILIP UPCHURCH]

Illinois

JOHNSON COUNTY

GENEALOGICAL and HISTORICAL SOCIETY

PUBLICATIONS FOR SALE

*This item sold in its
15 MAR 1996 Philip Edward
Smith & LPH*

Below is a form for ordering our publications. All of these books are still available in limited quantities.

- NEW! The 1870 Johnson County, IL Census, softbound, \$25
- NEW! The 1870 Johnson County, -IL Census, hardbound, \$30.
- _____ The 1860 Johnson County, IL Census, softbound, \$18.
- _____ The 1860 Johnson County, IL Census, hardbound, \$23.
- _____ The 1850 Johnson County, IL Census, softbound, \$15
- _____ The 1850 Johnson County, IL Census, hardbound, \$20
- _____ The History of New Burnside by Ned Cross, \$5.
- _____ Vienna Fraternal Cemetery Records to 1974, \$8
- _____ The Life and Times of Sophie B. Cummins by Habel Slack Shelton, \$5.
- _____ A Century in Egypt by J. A. Elkins, \$12.50 + \$2.50 p & h.
- _____ Days to Long Remember by the DAR, \$3.00 + \$1.00 p & h.
- _____ Sketch of Lincoln by Fred Suits, \$12.50 per sketch.
- _____ A History of Johnson County by Mary Ellen Hount, \$15 + \$1.50 p & h.
- _____ The Life of S. D. Poor by S. D. Poor, \$10 + \$1.50 p & h.
- _____ The Johnson County Court Records, 1813-1819, \$15 + \$1.50 p & h.
- _____ The Johnson County Commissioner's Records 1813-1817, \$15 + \$1.50 p & h.
- _____ History and Families of Johnson County by the Johnson County Genealogical/Historical Society, \$59.50 + \$5.00 p & h for each book if mailed.

NAME _____

Address _____ CITY _____ STATE _____ ZIP _____

Total Enclosed _____

Make checks payable to the Johnson County Genealogical-Historical Society,
P. O. Box 1207, Vienna, Illinois, 62995



Simpson and on Dec. 9, 1880, married Alice
er, the daughter of Lewis Blanton Keltner and
(Massy) Farris Keltner who were pioneer set-
n Johnson County.

ice was born near Simpson July 16, 1863 and
April 7, 1944. She is buried at Gilead Cemetery.
ildren of Thomas Benton Murrie and Alice
Murrie were:

ward (Ned) Murrie born Jan. 4, 1884 died July
66; his twin sister died three days after birth
is buried at Gilead Cemetery. Ned married
e Gillespie.

Hartsell Murrie (born Aug. 15, 1886 died May 10,
married Jewell Gillespie Aug. 11, 1912.

Ma Murrie born March 3, 1888 d. May 16, 1963.

oma (Naomi?) Murrie born 1895 died 1934.

ey adopted Grace Murrie, born Nov. 22, 1893,
Effie Murrie Nov. 19, 1895 after their parents,
les Monroe Murrie (brother of Thomas Benton
rie) and Anna Simpson Murrie died.

MURRIE-NEELY, Washington Jackson Murrie, a
of Thomas (Peg Leg) Murrie and Margaret
len was born May 18, 1828 and died April 14,
with burial at Murrie Cemetery. Washington
ied W. Nancy Neely Feb. 14, 1850. She was born
8, 1829 and died Sept. 12, 1865. She had a twin
r, Sarah Jane Neely, who married John W. Murrie,
ther to Washington Jackson Murrie.

MURRIE-REDDEN, Thomas (Peg Leg) Murrie,
May 14, 1797 in Maryland was the son of
ish immigrants to this country. Their names are
nown.



omas and Alice Murrie. Estie, Ned and Hartsell. Early
's

Thomas moved to North Carolina and from there
Knoxville, TN. On March 28, 1818 he married
egaret Redden (from North Carolina) and they
ved to Johnson County in 1835 and settled on
it became known as the Murrie homestead.
omas (Peg Leg) Murrie died Sept. 23, 1865.

MURRIE-ROBINSON, Robert Glen Murrie
ried Viola Gertrude Robinson Sept. 3, 1954.



Robert Murrie, Private US Army 1943

Children: Constance Sue Murrie, Judith Ann
ley, Michael Wayne Kerley.

MUSGRAVES, This family can be traced to Tho-
s Musgraves, born in Wayne Co., NC, who was

the father of Caleb Musgraves, one of the founder of
Mt. Pleasant, now in Union Co., IL. Caleb's son
James Musgraves was the father of Clifford who
served Johnson County in the First World War. One
of Clifford's sons, Creston Leroy (June 6, 1927)
married Elsie Lois Buffington (Feb. 23, 1939) on Aug.
27, 1946 at Anna, IL. They had eight children: Marie
Frances (see McBride-Musgraves), born May 27,
1947; Sandra K., Robert L., Karen A., Cyrus C.,
Christina L., Creston L. Jr., and Marian J.

Early Musgraves were Quakers and can be traced
from Illinois to Tennessee and North Carolina and
before that to Lancaster Co., PA. They emigrated to
this country in the late 1600's from northern Ireland,
"an easy jump" from "The north border country of
England." Musgrave is a bestowed name, and was
included in Scott's "Ivanhoe" and in the early years
was prominent at Eden Hall. Submitted by Ronald Lee
McBride

NEWBOLD FAMILY, William M. Newbold and
his sister, Phebe Newbold Wise, were two of the
early settlers of what became known as the Birdwell
Community about two miles west of New Burnside
in Johnson Co., IL.

William and Phebe were the children of Levy
Newbold, who died 1802 Onslow Co., NC and his
wife Sarah. The grandfather Purnell Newbold, born
1725 Somerset Co., MD and died 1789, Onslow Co.,
NC married Polly—. The great grandfather, Thomas
Newbold, married Joyce Purnell, and died in Som-
erset Co., MD in 1747. The great great grandparents
were Thomas and Adriana Newbold, who immi-
grated to Somerset Co., MD. in 1678 from Der-
byshire, England, with their sons, Murphy, Thomas,
and a daughter, Sarah. Thomas, the immigrant, died
in Somerset Co., MD, in 1713.

Phebe Newbold, born 1796 North Carolina died
after 1865 in Johnson Co., IL married Harney Wise.
Their known children were: Ira L. (1824-1877) mar-
ried 1847 Catherine Howerton; his step-sister, Nancy,
born 1832; Matthew, born 1835; and Mary, born
1836. Harney Wise died and Phebe married (2) in
Johnson County July 31, 1839 Benjamin F. Howert-
on. Howerton was a widower with eight living
children. He died in 1848 in Johnson County. Phebe
and Howerton had two children, Angeline, born
1841 and Benjamin Null Howerton, born 1845.

William M. Newbold, born 1787, Onslow Co., SC
and died May 22, 1856, Johnson County, married
Alice Wise, born 1796 North Carolina, died Nov. 29,
1852, Johnson County. William and his sister Phebe
left North Carolina in the early 1830's. By 1833
William was in Henry Co., TN where a son was born.
By 1839 the two families were settled in Johnson
County.

William and Alice Newbold's known children
were: George B. (d. 1867) married (1) 1849 Melinda
Bullard (2) 1858 Louisa Busby Bullard; John Robin-
son (dead by 1860) married 1842 Mary Upchurch;
Fannie C. (1826-1856) married 1844 John D. Prince;
William (1828-died after 1860) married 1842 Eliza-
beth Upchurch, a sister of Mary; Feba (1827-1906)
married 1848 Anderson Severe Howertown, a step-
son of her Aunt Phebe; James Oliver, (Sept. 3, 1833-
April 21, 1905) married Aug. 25, 1853 Lucy Ann
Howerton (April 9, 1833- Sept 3, 1896) a stepdaugh-
ter of his Aunt Phebe; Ottawa (1837-1852); and Eliza-
beth Ann (Louisa) Newbold (1838-died after 1905)
married 1857 in Union Co., IL, Christopher C. Bul-
lard. The others married in Johnson County.

George B. Newbold's widow and children left the
county and moved to Independence Co., AR to live
near Louisa Newbold Bullard. John R. Newbold's
widow and children stayed in the county near Ozark
and Reynoldsburg. John D. Prince left the state after
his wife Fannie died. Young William went to Union
Co., IL, where some of the other family members
lived for a while. His children remained there, ex-
cept a son, Ottoway T. "Doc" Newbold. Ottawa,
(Nov. 28, 1854-March 27, 1914) married (1) 1874
Sarah Breen (2) Dec 15, 1884 in Johnson County,

Amanda Katherine Wise (1862-1953). "Doc" and
Amanda raised their ten children in Johnson County
near their other Newbold relatives.

Part of the original William Newbold farm is still
owned by Newbold family members. A small ceme-
tery, still in use, is on this property, located in Section
7, in Burnside Twp. Family tradition is that Wil-
liam's son Ottawa, sat down under a large tree on his
father's farm one day and said, "When I die, I want
to be buried here." A short time later, in 1852, the
young boy died rather unexpectedly, and his par-
ents carried out his wishes. Now, several genera-
tions of the family are buried in the place Ottawa
Newbold picked out for himself.

William's son, James Oliver Newbold raised his
family of eight children on the original Newbold
farm. Estate papers show he raised cattle, hogs,
sheep, horses, the usual assortment of poultry, and
small fruits and vegetables for market. His children
were: Isabella (1854-1882); Mary (1856-1937) mar-
ried 1889 James William Choate; Mark (Jan 13, 1859
- Dec. 31, 1939) married Oct 16, 1892 Mary Paralee
Burton (Oct 3, 1868-March 28, 1944); Martha (1861-
1939) married (1) 1897 James Frank Taylor (2) Frank
Batson; Surilda (1863-1941) married 1883 Charles W.
S., H.H. Hundley; Anderson (1867-1936) married (1)
1890 Delia Whitehead (2) 1902 Minnie Westbrooks
(3) 1906 Belle Tanner; Julia Ann (1870-1947) married
(1) 1901 George W. O'Neal (2) Jesse Watkins; and Ida
Newbold (1874-1943) married 1894 Samuel Taylor.
After Lucy died, James Oliver Newbold married (2)
Aug. 1, 1897 Annie Whittaker. Marriages are recorded
in Johnson Co., IL.

James Oliver's son, Mark Newbold, had six chil-
dren, all born on a nearby farm. His children were:
Ward Burton (1893-1981) married (1) 1916 Lillia
Marie Mosier (2) 1926 Lula Collier Bush (3) Muriel
Bass Arnold; Ebert Lavern, (Dec. 19, 1896-Dec 19,
1944) married Oct 28, 1932 Sarah Louise Casey (Aug.
6, 1910-Dec. 17, 1981); Urel (1894-1903); Irene Dimple
(1900-1989) married Grover Williams; Roy Oliver
(1904-1978) married (1) 1928 Bonnie Lora Davis (2)
1935 Mary Virginia Stamper; and Walter Lee New-
bold (1907-1980) married (1) Hazil Holhouser (2)
Fayme Carlson.

HARRY AND CLARA NAVE, Harry Nave and
Clara Marshall Tate were both born on farms near
Thompsonville in Franklin County, he on Dec. 12,
1885, and she on April 16, 1889. They moved to
Reevesville in southeastern Johnson County shortly
after their marriage and remained in that commu-
nity until his death on March 24, 1954. During that
time Harry was agent-operator for the Illinois Cen-
tral Railroad but became known for his weekly
newspaper columns in the *Vienna Times*, *Metropolis
News*, and *Golconda Herald-Enterprise* which chro-
nicle the life of the village with humor, wit, outspo-
ken opinion and commentary, and a deep under-
standing of and empathy with the people among
whom he, Clara, and their three children, Mary,
James and Eugene lived.

In one column he wrote of their arrival in Johnson
County: "Married on the eighth of Aug. 1913, with
\$3.65 in my pocket. As winter came on, suffered a
stroke of panic at the financial drought and when
Reevesville was placed on the bulletin - its location
a vague uncertainty - I bid frantically, praying fer-
vently for a warm shower of faith, hope, and charity.
My answer to the call of the wild was rewarded and
Clara and I arrived here early in Jan. 1914, accom-
panied by a normal Southern Illinois wet snowstorm.
We were met at the depot by a delegation of the
Tobacco Consumers Association and were directed
to one of the more pretentious clapboard houses. We
were too newly married to be cast down by the
weather and somewhat dreary aspect of things, but
like strange cats in an alien alley, were a bit leary and
would have slipped quietly away at the drop of a hat,
but we were broke. Then the folks pulled back the
curtain and disclosed hearts of gold. We settled back

ELDORADO, SALINE CO, IL

○ From At 16 FEB 1980 James Carl Read Ed RPM

I. Joseph Read, Sr "The Elder" - HAD NEIGHBOR: SAMUEL ELDER

A. Joseph Read, Jr and Lamma Catherine U
of the John U, III / Samuel U subclass -
John U, Line

A word about the father of Joseph (Jr) may be of interest to some of your readers. He was born in the year 1800 in the state of Georgia, according to census records, and he married in Kentucky in Caldwell County on 14 November 1822. His bride, widow of Shadrack Oliver, was Jemima EASLEY, descendant of the Huguenot emigrant, Robert ESLEY of Henrico County, Virginia.

Joseph the elder and wife Jemima moved from Kentucky in 1829, settling in Gallatin County, where he had several tracts of land. In August 1857 Joseph Read and his good neighbor, Samuel Elder, decided to lay out a village, and they both donated land for what is now the town of Eldorado, Illinois, in Saline County. This town was first called Elderredo - a crude attempt to honor both the Elder and Read families. Somehow the name became altered some years later to the more recognizable Eldorado and legend has it that this came about when a sign painter for the railroad came through to put a sign on the depot. Asking the stationmaster for the name of the town, he was shown on a bill of lading the name Elderredo and decided the folks just didn't know how to spell this Spanish name, so he painted his sign to read ELDORADO and so the town is called today, though to be entirely correct, it should be El Dorado.

Eldorado, IL ↑

Thank you

P.O. BOX 4
HARRISBURG IL 62946-0004

Ancestor Chart Book Vol 1		\$15.00	\$2.00	\$17.00
Ancestor Chart Book Vol II		\$13.00	\$2.00	\$15.00
Shawnee Quarterly(back issues per copy)		\$2.00	\$1.00	\$3.00
General History				
Downtown Eldorado Changing		\$10.00	\$2.00	\$12.00
✓ Early History of Galatia	1836-1977	\$5.00	\$1.00	\$6.00
✓ Galatia III 140 Years of History	1836-1976	\$5.00	\$1.00	\$6.00
✓ History of Saline County (Hardbound)	1947-1997	\$35.00	\$5.00	\$40.00
Reflections of the 1937 Flood	1937	\$15.00	\$2.00	\$17.00
White County Biographical Sketches	1901	\$10.00	\$2.00	\$12.00
General Reference				
1908 Standard Atlas of Saline County Plat Book	1908	\$15.00	\$2.00	\$17.00
Harrisburg City Directory	1898	\$6.00	\$1.00	\$7.00
Eldorado City Directory	1923	\$10.00	\$2.00	\$12.00
Census Records				
Gallatin County Federal Census	1830	\$5.00	\$1.00	\$6.00
Gallatin County Federal Census	1840	\$5.00	\$1.00	\$6.00
Gallatin County Federal Census	1860	\$15.00	\$2.00	\$17.00
Saline County Federal Census	1860	\$15.00	\$2.00	\$17.00
Saline County Federal Census	1870	\$15.00	\$2.00	\$17.00
Saline County Federal Census	1880	\$18.00	\$2.00	\$20.00
Saline County Federal Census (Brushy Twp. Only)	1900	\$5.00	\$1.00	\$6.00
Saline Co Fed Census-E Eld-Long Branch-Raleigh-Rector	1920	\$17.50	\$2.00	\$19.50
Saline Co Fed Census-Harrisburg Township	1920	\$17.50	\$2.00	\$19.50
Saline Co Fed Census-Br-C-Mills-Cot-Gal-Indep-Ledford				
Ledford,Mountain,Muddy,Stonefort & Tate	1920	\$17.50	\$2.00	\$19.50
Saline Co State Census	1855	\$5.00	\$1.00	\$6.00
Saline Co State Census	1865	\$5.00	\$1.00	\$6.00
Miscellaneous County Records				
Minute Book of Regular Baptist Church, Wolf Creek	1931-1996	\$12.00	\$2.00	\$14.00
Gallatin County Court Orders	1813-1820	\$12.00	\$2.00	\$14.00
Gallatin County Slave Register	1814-1839	\$10.00	\$2.00	\$12.00
Early Gallatin County Probates Vol 1		\$8.00	\$2.00	\$10.00
Saline County Chancery Records	1845-1863	\$13.00	\$2.00	\$15.00
Saline County Chancery Records	1864-1870	\$10.00	\$2.00	\$12.00
Saline County Chancery Records Box 29-33		\$10.00	\$2.00	\$12.00
Saline County Chancery Records Box 34-38		\$15.00	\$2.00	\$17.00
Saline County Commissioners Court Orders	1847-1855	\$20.00	\$2.00	\$22.00
Saline County Records of the Poor		\$15.00	\$2.00	\$17.00
Saline County Naturalization & Dec of Intentions	1939-1945	\$8.00	\$2.00	\$10.00
Naturalization Saline County II	Dec 1908-Sep 1938	\$12.00	\$2.00	\$14.00
Declaration of Intention Saline County II	1906-1919 1930-50	\$11.00	\$2.00	\$13.00
Pope County Deed Book	1811-1859	\$9.00	\$2.00	\$11.00
Criminal Justice Records				
Dorrisville Police Magistrate Records	1917-1927	\$10.00	\$2.00	\$12.00
Eddyville Justice Docket	1904-1924	\$10.00	\$2.00	\$12.00
Harrisburg Police Magistrate Book "F"	1915-1916&1923	\$10.00	\$2.00	\$12.00
Harrisburg Justice of the Peace Docket	1886-89 1905-06	\$10.00	\$2.00	\$12.00
Harrisburg Police Magistrate 1906-7,Deeds 1905-7 JpRec	1912-1913	\$10.00	\$2.00	\$12.00
Pope County Justice Docket	1886-1920	\$12.00	\$2.00	\$14.00
Birth,Marriage & Divorce Records				
Saline County Delayed Births	1866-1884	\$10.00	\$2.00	\$12.00
Gallatin Co Marriages-Books 1 & 2	1830-1858	\$10.00	\$2.00	\$12.00
Gallatin Co Marriages-Books B,C & D	1867-1887	\$12.00	\$2.00	\$14.00
Gallatin Co Marriages Books E, F, & G	1898-1902	\$12.00	\$2.00	\$14.00
Saline Co Marriages	1847-1880	\$15.00	\$2.00	\$17.00
Saline Co Marriage Register Book A-1	1878-1898	\$15.00	\$2.00	\$17.00
Saline County Marriage Book B	1898-1908	\$15.00	\$2.00	\$17.00
Saline County Marriage Book B & E Minors		\$15.00	\$2.00	\$17.00
Wm'son Co 1839-53&1865,Pope1826-45,Johnson 57-69	1839-1869	\$5.00	\$1.00	\$6.00
Saline Co Divorce Abstracts	1847-1886	\$10.00	\$2.00	\$12.00
Saline Co Divorce Abstracts	1886-1899	\$10.00	\$2.00	\$12.00
Wills,Deaths,Obits & Estate Records				
Eldorado Journal Obituaries	1917-1918-1919	\$10.00	\$2.00	\$12.00
Gallatin Co Will Records Vol I	1814-1847	\$7.00	\$1.00	\$8.00

REC'D
14 MAY
2005

* FOR
Richard
Dean
- sent to
Wm
14 MAY
2005

SALINE CO, IL

On 14 OCT 2004 RPH spent the day exploring Upchurch family history in Saline Co, IL. See Trip Report File for full details. 14 Publications were obtained as shown on the attached list. These are placed on the IL shelf. Note that two of the books relate to Williamson Co, IL

CC 3 PAGES TO RICHARD DEAN U 14 MAR 2005

Ancestor Chart Book Vol 1		\$15.00	\$2.00	\$17.00
Ancestor Chart Book Vol II		\$13.00	\$2.00	\$15.00
Shawnee Quarterly(back issues per copy)		\$2.00	\$1.00	\$3.00
General History				
Downtown Eldorado Changing		\$10.00	\$2.00	\$12.00
✓ Early History of Galatia	1836-1977	\$5.00	\$1.00	\$6.00
Galatia Ill 140 Years of History [OUT OF PRINT OCT 04]	1836-1976	\$5.00	\$1.00	\$6.00
✓ History of Saline County (Hardbound)	1947-1997	\$35.00	\$5.00	\$40.00
Reflections of the 1937 Flood	1937	\$15.00	\$2.00	\$17.00
✓ White County Biographical Sketches	1901	\$10.00	\$2.00	\$12.00
General Reference				
✓ 1908 Standard Atlas of Saline County Plat Book	1908	\$15.00	\$2.00	\$17.00
Harrisburg City Directory	1898	\$6.00	\$1.00	\$7.00
Eldorado City Directory	1923	\$10.00	\$2.00	\$12.00
Census Records				
Gallatin County Federal Census	1830	\$5.00	\$1.00	\$6.00
Gallatin County Federal Census	1840	\$5.00	\$1.00	\$6.00
Gallatin County Federal Census	1860	\$15.00	\$2.00	\$17.00
Saline County Federal Census	1860	\$15.00	\$2.00	\$17.00
Saline County Federal Census	1870	\$15.00	\$2.00	\$17.00
Saline County Federal Census	1880	\$18.00	\$2.00	\$20.00
Saline County Federal Census (Brushy Twp. Only)	1900	\$5.00	\$1.00	\$6.00
Saline Co Fed Census-E Eld-Long Branch-Raleigh-Rector	1920	\$17.50	\$2.00	\$19.50
Saline Co Fed Census-Harrisburg Township	1920	\$17.50	\$2.00	\$19.50
Saline Co Fed Census-Br-C-Mills-Cot-Gal-Indep-Ledford Ledford,Mountain,Muddy,Stonefort & Tate	1920	\$17.50	\$2.00	\$19.50
Saline Co State Census	1855	\$5.00	\$1.00	\$6.00
Saline Co State Census	1865	\$5.00	\$1.00	\$6.00
Miscellaneous County Records				
Minute Book of Regular Baptist Church, Wolf Creek	1931-1996	\$12.00	\$2.00	\$14.00
Gallatin County Court Orders	1813-1820	\$12.00	\$2.00	\$14.00
Gallatin County Slave Register	1814-1839	\$10.00	\$2.00	\$12.00
Early Gallatin County Probates Vol 1		\$8.00	\$2.00	\$10.00
Saline County Chancery Records	1845-1863	\$13.00	\$2.00	\$15.00
Saline County Chancery Records	1864-1870	\$10.00	\$2.00	\$12.00
Saline County Chancery Records Box 29-33		\$10.00	\$2.00	\$12.00
Saline County Chancery Records Box 34-38		\$15.00	\$2.00	\$17.00
Saline County Commissioners Court Orders	1847-1855	\$20.00	\$2.00	\$22.00
Saline County Records of the Poor		\$15.00	\$2.00	\$17.00
Saline County Naturalization & Dec of Intentions	1939-1945	\$8.00	\$2.00	\$10.00
Naturalization Saline County II	Dec 1908-Sep 1938	\$12.00	\$2.00	\$14.00
Declaration of Intention Saline County II	1908-1919 1930-50	\$11.00	\$2.00	\$13.00
Pope County Deed Book	1811-1859	\$9.00	\$2.00	\$11.00
Criminal Justice Records				
Dorrisville Police Magistrate Records	1917-1927	\$10.00	\$2.00	\$12.00
Eddyville Justice Docket	1904-1924	\$10.00	\$2.00	\$12.00
Harrisburg Police Magistrate Book "F"	1915-1916&1923	\$10.00	\$2.00	\$12.00
Harrisburg Justice of the Peace Docket	1886-89 1905-06	\$10.00	\$2.00	\$12.00
Harrisburg Police Magistrate 1906-7,Deeds 1905-7 JpRec	1912-1913	\$10.00	\$2.00	\$12.00
Pope County Justice Docket	1886-1920	\$12.00	\$2.00	\$14.00
Birth,Marriage & Divorce Records				
✓ Saline County Delayed Births	1866-1884	\$10.00	\$2.00	\$12.00
Gallatin Co Marriages-Books 1 & 2	1830-1858	\$10.00	\$2.00	\$12.00
Gallatin Co Marriages-Books B,C & D	1867-1887	\$12.00	\$2.00	\$14.00
Gallatin Co Marriages Books E, F, & G	1898-1902	\$12.00	\$2.00	\$14.00
✓ Saline Co Marriages	1847-1880	\$15.00	\$2.00	\$17.00
✓ Saline Co Marriage Register Book A-1	1878-1898	\$15.00	\$2.00	\$17.00
✓ Saline County Marriage Book B	1898-1908	\$15.00	\$2.00	\$17.00
✓ Saline County Marriage Book B & E Minors		\$15.00	\$2.00	\$17.00
Wm'son Co 1839-53&1865,Pope1826-45,Johnson 57-69	1839-1869	\$5.00	\$1.00	\$6.00
Saline Co Divorce Abstracts	1847-1886	\$10.00	\$2.00	\$12.00
Saline Co Divorce Abstracts	1886-1899	\$10.00	\$2.00	\$12.00
Wills,Deaths,Obits & Estate Records				
Eldorado Journal Obituaries	1917-1918-1919	\$10.00	\$2.00	\$12.00
Gallatin Co Will Records Vol I	1814-1847	\$7.00	\$1.00	\$8.00

ROBERT P. UPCHURCH
 351 Shetland Valley Court
 Chesterfield, MO 63005-4840
 (636) 530-6022



29 APR 2005

SALINE CO GENEALOGICAL SOCIETY
 PO BOX 4
 HARRISBURG, IL 62946

Dear Felts,

Please send me the three items I have checked and highlighted on the attached sheet. I assume the cost for the three items plus shipping and handling amounts to \$52.00. My check for this amount is enclosed. Please send these items to me at the above address.

Thank you.

Sincerely yours
 Robert P. Upchurch

County Naturalization & Deeds		19 1930-50		
Naturalization Saline County II				
Declaration of Intention Saline County II				
Pope County Deed Book	1811-1859	\$9.00		
Criminal Justice Records				
Dorrisville Police Magistrate Records	1917-1927	\$10.00	\$2.00	\$12.00
Eddyville Justice Docket	1904-1924	\$10.00	\$2.00	\$12.00
Harrisburg Police Magistrate Book "F"	1915-1916&1923	\$10.00	\$2.00	\$12.00
Harrisburg Justice of the Peace Docket	1886-89 1905-06	\$10.00	\$2.00	\$12.00
Harrisburg Police Magistrate 1906-7, Deeds 1905-7 JpRec	1912-1913	\$10.00	\$2.00	\$12.00
Pope County Justice Docket	1886-1920	\$12.00	\$2.00	\$14.00
Birth, Marriage & Divorce Records				
Saline County Delayed Births	1866-1884	\$10.00	\$2.00	\$12.00
Gallatin Co Marriages-Books 1 & 2	1830-1858	\$10.00	\$2.00	\$12.00
Gallatin Co Marriages-Books B, C & D	1867-1887	\$12.00	\$2.00	\$14.00
Gallatin Co Marriages Books E, F, & G	1898-1902	\$12.00	\$2.00	\$14.00
Saline Co Marriages	1847-1880	\$15.00	\$2.00	\$17.00
Saline Co Marriage Register Book A-1	1878-1898	\$15.00	\$2.00	\$17.00
Saline County Marriage Book B	1898-1908	\$15.00	\$2.00	\$17.00
Saline County Marriage Book B & E Minors		\$15.00	\$2.00	\$17.00
Wm'son Co 1839-53&1865, Pope 1826-45, Johnson 57-69	1839-1869	\$5.00	\$1.00	\$6.00
Saline Co Divorce Abstracts	1847-1886	\$10.00	\$2.00	\$12.00
Saline Co Divorce Abstracts	1886-1899	\$10.00	\$2.00	\$12.00
Wills, Deaths, Obits & Estate Records				
Eldorado Journal Obituaries	1917-1918-1919	\$10.00	\$2.00	\$12.00
Gallatin Co Will Records Vol I	1814-1847	\$7.00	\$1.00	\$8.00

UPCHURCH
351 SHETLAND VALLEY COURT
CHESTERFIELD, MISSOURI 63005-4840
(636) 530-6022



27 JUN 2001

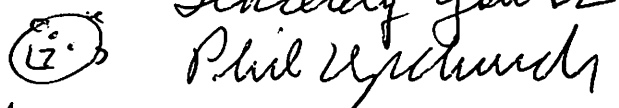
VERSAILLES G & H SOCIETY
103 W FIRST
VERSAILLES, IL 62378

Dear Folks,

My cousin Carol Collins of Mt Sterling, IL informs me that I can obtain a copy of the book - Cemeteries of Brown County, IL from you. She indicates the cost is \$35.00/copy including shipping. Enclosed is my check for \$35.00. Please send to me as shown above.

I am anxious to have a copy of the Family History Book of Brown Co should it become available. Do you have other publications.

Enclosed are details on my Upchurch Publications on 17 JUN 01 it was my pleasure to attend the Upchurch Reunion at Tinswell, IL and to give an UPCHURCH lecture.

Sincerely yours

[ROBERT PHILLIP UPCHURCH]

UPCHURCH
351 Shetland Valley Court
Chesterfield, MO 63005

July 14, 2001

Versailles Area G. & H Society
P. O. Box 92
Versailles, IL 62378

Dear Folks:

I am in receipt of a copy of the Brown County Cemeteries book on which I seem to owe an additional \$5.00. My check #1856 for \$5.00 is enclosed.

Thank you for your cooperation.

Sincerely yours,

Robert P. Upchurch

Robert P. Upchurch

RPU:s

Enclosure: ck #1856/\$5.00

SALINE CO, IL

Gen Upchurch
977
.3
P962
ILL

SALINE CO., ILLINOIS PROBATES

**VOL. III
(BOXES 33 - 40)**

Rec'd 23 MAR 1995
from Paula
Jean Hannah



Shirley Cummins Shewmake

**COMPILED BY
SHIRLEY CUMMINS SHEWMAKE
1992**

HOUSTON PUBLIC LIBRARY



RO1001 44249

√√

cla

Copyright (c) 1992

SHIRLEY CUMMINS SHEWMAKE

Additional copies may be ordered from:

Mrs. Shirley Cummins Shewmake
601 S. Webster Street
Harrisburg, Illinois 62946

Printed by:

DOGWOOD PRINTING

P.O. Box 716

Ozark, MO 65721

FOREWORD

This book was compiled from the original Saline County, Illinois Probate Court records in the Court House at Harrisburg, Illinois.

These probates are located in numbered boxes with numbered file folders in each box. The probates contained in these boxes have not been filed alphabetically or by the year. Several files for the same individual can be found scattered through out the boxes.

In this book I have listed the box number and file number to the right of each probate copied, and this will enable one to locate the record.

The material in these files was very difficult to transcribe, if a name or letter wasn't legible it has been underlined. Some spelling of names may vary in the same probate.

An asterisk (*) in the index denotes that individual's probate.

This book Volume 111 of the Saline County, Illinois Probates is a continuation of Volume's 1 and 11 published by the Saline County Genealogical Society in 1987.

I have copied the Saline County, Illinois probates through Box 115, up to the year 1900. They will be published in the Spring of 1993.

Special thanks go to Ron Ledford, Saline County Circuit Clerk, and his courteous staff for their assistance.

NANCY BICKERS

Box 34-7

Date of death - 13 September 1887

Heirs - No husband. Deceased left surviving her no husband, no child or children or descendants of a child or children, but the following brothers and sisters: the heirs of Henry Pankey, Elizabeth Arnold, Hampton Pankey, Jane Abney, Susan Harris, Geo. W. Pankey, Sarah Abney, C. E. Horning, her brothers and sisters and only heirs.

Administrator - 1st, Hampton Pankey. Bondsmen: G. W. Pankey, Hampton Pankey, brothers of Nancy Bickers, 5 Oct. 1887. 2nd, Alsey Harris. Bondsmen: Simpson Russell, Wm. A. Lebo, 25 July 1888.

Appraisers - B. L. Blackman, Ennis D. Sweat, Pleas Taylor.

Purchasers at sale - Robert Russell, James Arnold, E. H. Vance, Susan Harris, Eliza Russell, James Pickering, Louis Patterson, Stephen Morse, Joseph Greer, D. W. Harris.

DAVID M. UPCHURCH

Box 34-8

Date of death - 6 November 1888

Heirs - No widow. Children: Mary Coffey, J. W. Upchurch, H. L. Upchurch, E. H. Upchurch, Margaret E. Grable, Clemantine Thomas, Emma Florence Smith.

Administrator - H. L. Upchurch

Bondsmen - C.D. Hall, J. C. Upchurch, J. W. Braden, J. P. Chenault

Date adm. began - 31 July 1894

Final return - 4 Feb. 1896

Appraisers - J. C. Upchurch, C. D. Hall, John W. Brady.

GEORGE W. GLASCOCK

Box 34-9

Date of death - 1894

Date will made - 23 August 1893. Will in probate file.

Witnesses to will - Wm. H. Parish Sr., Joseph R. Gullede

Heirs - Lucy C. Glascock, widow. Seven living children: Jane B. Bedford, John H. Glascock, Ewing S. Glascock, Elizabeth C. Limerick, Mary R. Coffee, Laura L. Bramlet, Jenetta A. Butler. Grandson, Ewing M. Glascock. Four grandchildren, children of deceased daughter, Sarah Ann Elder, Otie (Oaty) Elder, Lucy Caroline Elder, Mary Ellen Elder, Laura Isabella Elder.

Administrator - John H. Glascock

Bondsmen - T. J. Thornberry, H. L. Burnett, E. S. Glascock.

Date adm. began - 19 March 1894

Final return - 6 April 1896

Appraisers - 31 March 1894, Hez Bramlet, Thos. Barton, Nelson Thomas. 12 January 1895, W. C. Baker, John S. Naugle, W. H. Blake.

Purchasers at sale - Frank Shaw, W. H. Endicott, J. P. Read, D. M. Butler, J. W. Turner, Henry Bramlet, A. J. Tison, P. A. Johnson.

Others mentioned in estate - Jacob P. Sisney, guardian report Aug. 5, 1889 to March 2, 1891 for Ewing M. Glascock, minor child of Channel W. Glascock.

○ See Saline Co, IL Records - Saline Co, IL Probates
VOL III - (Boxes 33-40) - To RPU from Paula Jean
Hannah on 23 MAR 1995).

I. John U, III - Head of clan

A. Samuel U

1. John U

△ a. David Mocklin U, I b. 10 JUL 1822 (TN)
d. 6 NOV 1888 (Saline Co, IL)

△ DAVID M. UPCHURCH

Box 34-8

Date of death - 6 November 1888

△+△+△ Heirs - No widow. Children: Mary Coffey, J. W. Upchurch, H. L. Upchurch,
△+△+△+△ E. H. Upchurch, Margaret E. Grable, Clemantine Thomas, Emma Florence
Smith.

△ Administrator - H. L. Upchurch

△+△+△+△ Bondsmen - C.D. Hall, J. C. Upchurch, J. W. Braden, J. P. Chenault

Date adm. began - 31 July 1894

Final return - 4 Feb. 1896

△+△+△ Appraisers - J. C. Upchurch, C. D. Hall, John W. Brady.

FURTHER IDENTIFICATION OF ABOVE:

△ DAVID M. U = DAVID MACKLIN U, I

△ MARY COFFEY (DAU) = nee MARY CATHERINE U

△ J. W. U (SON) = JOHN W. U

△ H. L. U (SON) = HIRSHAM LEWIS U

△ E. H. U (SON) = EBERT H. U

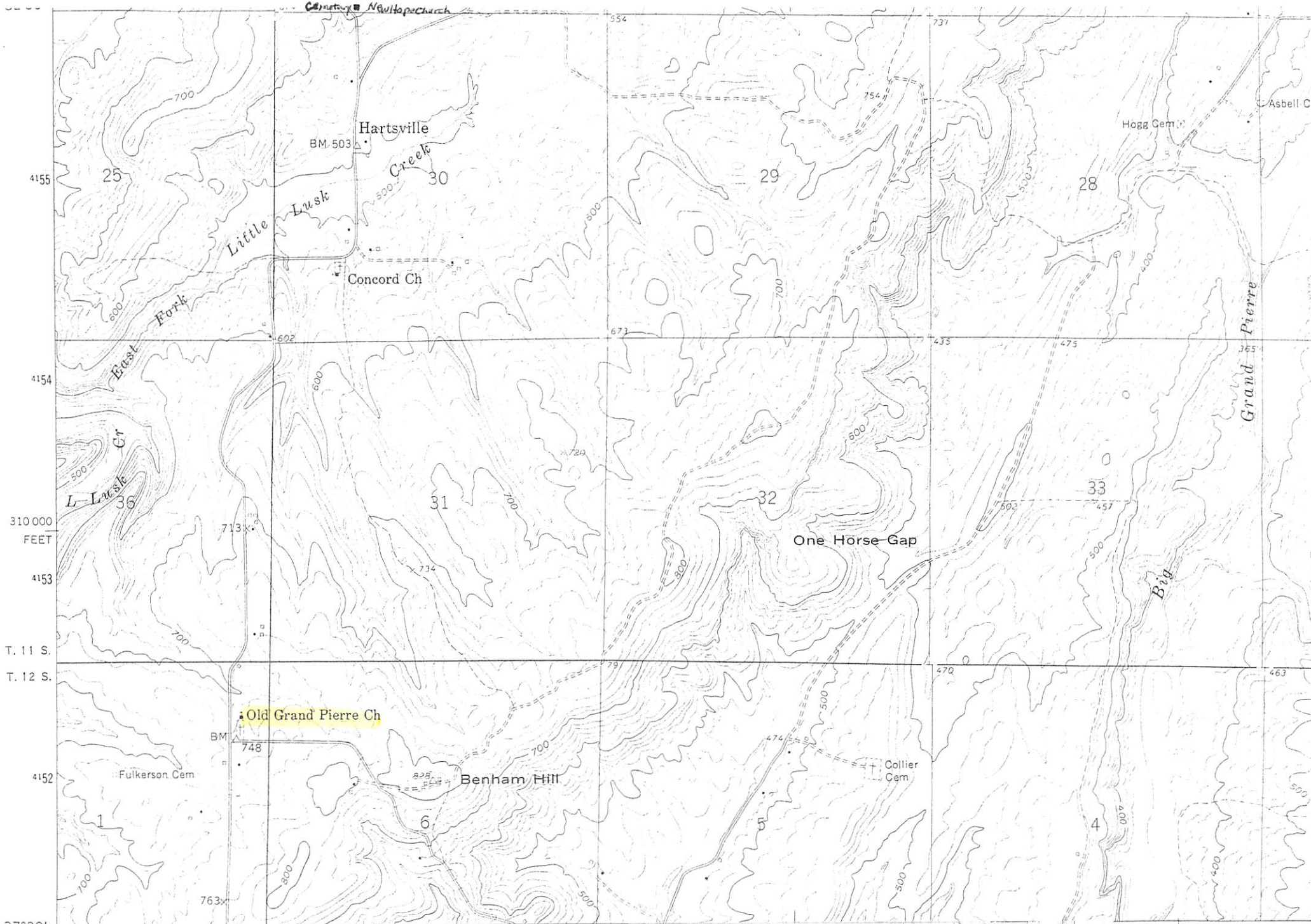
△ MARGARET E GRABLE (DAU) = MARGARET E. U. (nee)

△ CLEMANTINE THOMAS (DAU) = MELVINA CLEMENTINE U (nee)

△ EMMA FLORENCE SMITH (DAU) = nee EMILY FLORENCE U

- OTHERS ARE NOT IDENTIFIED

△ WHO IS J. C. U?



4155

4154

310 000
FEET

4153

T. 11 S.

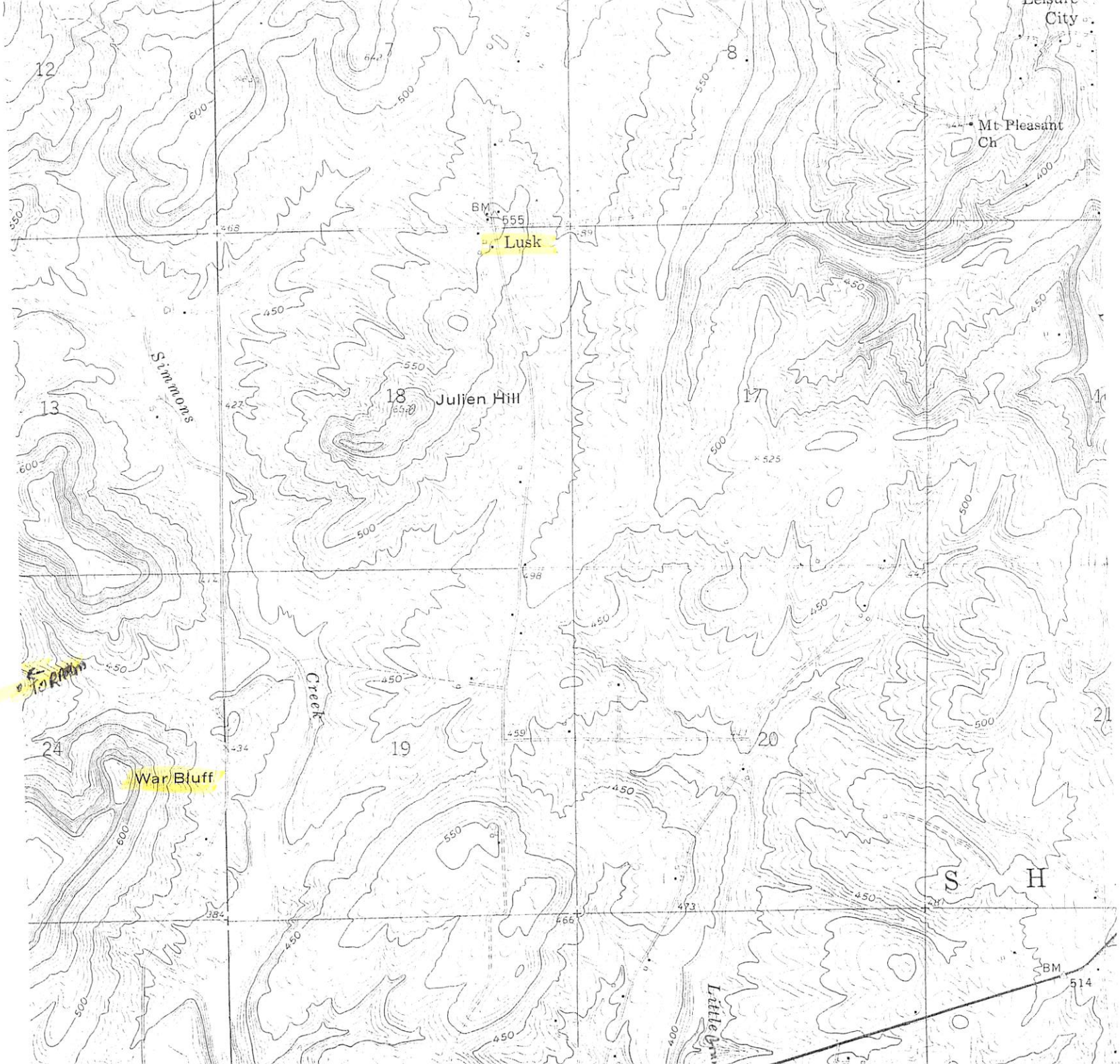
T. 12 S.

4152

37°30'

URG
NE

SHETLERVILLE)
 3358 IV NW
 SCALE 1:24 000
 0
 3000 4000 5000



US Geol. Survey
= don't know
the year

POPE CO., IL

more on the Magazine SPRINGHOUSE which covers local history and lore for southern IL which Upchurch lined. See RPH file - Family History - Publications - Springhouse for a complete copy of an issue provided in a letter 19 OCT 2011 to RPH from Cousin William Cleas Searles.

This writing covers excerpts from Springhouse provided by Martha Susan Searles D/O WCS which reveal 4 articles penned by her father. The excerpts are from Vol 22 No 1 JUN 2005, Vol 23 No 4 SEP-OCT 2006, Vol 24 No 2 APR 2007, FEB 2008 Vol 24 No 6. All have been placed in FH-PUB file. They came to RPH in the fall of 2011. Only one contains Upchurch references - Vol 23 No 4 SEP-OCT 2006 in an article entitled "TO THE WAR BLUFF" by WCS. An excerpt follows: ON PG 10 WCS WRITES:

THE UPCHURCH FAMILY INVOLVED:

I. JOHN U, III - Head of Clan

A. SAMUEL U

1. JOHN U 1798 (NC) - 1844 (SALINE Co., IL)

a. THOMAS J. U 1839 (GALLATIN Co., IL) - 1896 (POPE CO., IL)

Δ i. ELLIS DELARY U ←
1868 (SALINE Co., IL)
- 1950

Δ ii JONATHAN BERRY U 1866
(SALINE Co., IL)
- 1906 (")

VS BORN AT LUSK? MO 1891 (GALLATIN Co., IL) MARY ELIZABETH MOORE 1867-1943

(F) ETHEL SUSAN CAPOLA U
MOT OF WCS (H) WCS

(I) MARTHA SUSAN SEARLES

THE WAR BLUFF WAS 6 MILES NORTH OF GOLCONDA IN POPE CO., IL. UPCHURCHES LIVED IN NEARBY LUSK, RAUM, & EDDYVILLE

FRPH NOTE - MEMBERS OF THE WILLIAM U, IV CLAN LIVED A FEW MILES AWAY TO THE WEST & NORTHWEST - NEW BURNSIDE, GREAT SPRS, STONEFORT, CARRIER MILLS

My mother's family name was Upchurch. Her father was born at Lusk about a mile and a half northeast of War Bluff. There is some doubt that Lusk was ever large enough to be recognized as a country village. Several farms round about had Upchurch owners and tenants, for they were a large family, Some lived near Raum two miles west of the bluff and others in and around Eddyville. None remain. Their name today is found only in little hilltop cemeteries.

A very early childhood memory is visiting Mother's uncle, Ellis Upchurch, at Lusk. Then when I was six or seven years old, exciting news came that there was to be a family reunion with a grand picnic atop War Bluff. My imagination ran out of control with small boy expectations. Also eager to go was my paternal grandfather, for he wanted to see again the bluff where he and another man had harvested all the hickory timber some thirty years earlier. Three carloads of folks planned to travel together from Saline County, but rain fell. This was 1931 when in wet weather no motor vehicle dared to challenge those steep hills, creeks with no bridges, and totally unimproved dirt roads. "Disappointed" was too weak an expression. There is no more memory of this proposed event. My immediate family never went there again.

GALLATIN CO., IL

① SPRINGHOUSE A copy (Vol 19 No 5 JUN 2002) of the local history magazine may be found in RPU files - under Family History - Publications

△ This copy was provided to RPU by Cousin WILLIAM CLETUS SEARLES of the John U, III / Samuel U Subclan - John U, III - Jonathan Berry U [CS] WCS has written numerous articles for the magazine including one in this issue on the farm his Greatgrandparents. WILLIAM WALKER MOORE & SUSAN ELIZABETH BOORLAND, ages 23 & 16 in 1850, established in GALLATIN County IL before 1860. WCS visited the farm in recent years (1980-2000 era) and writes of the changes since he knew the farm as a boy.

The address for the magazine is HEROD, IL which is in the NE corner of POPE County. It is in the Shawnee National Forest. SALINE Co., IL just north of GALLATIN Co., IL & to the NE.

Note - The GP of WCS were Jonathan Berry U and Mary Elizabeth Moore b 1867 - she would have been the D/o William Walker Moore - RPU

Vol 19 No 5 JUN 2002 was provided to RPU in a letter 19 OCT 2011 from WCS

POPE CO., IL

① SPRINGHOUSE A copy (Vol 19 No 5 JUN 2002) of the local history magazine may be found in RPU files - under Family History - Publications

△ This copy was provided to RPU by Cousin WILLIAM CLETUS SEARLES of the John U, III / Samuel U Subclan - John U Jim - Jonathan Berry U [CS 70]

WCS has written numerous articles for this magazine including one in this issue on the farm his Greatgrandparents. WILLIAM WALKER MOORE & SUSAN ELIZABETH BOURLAND, ages 23 & 16 in 1850, established in GALLATIN County IL before 1860. WCS visited the farm in recent years (1980-2000 era) and writes of the changes since he knew the farm as a boy.

The address for the magazine is HEROD, IL which is in the NE corner of POPE County. It is in the Shawnee National Forest. SALINE Co., IL lies just North of GALLATIN Co., IL to the NE.

Note - The GP of WCS were Jonathan Berry U and Mary Elizabeth Moore b 1867 - She would have been the D/o William Walker Moore - RPU

Vol 19 No 5 JUN 2002 was provided to RPU in a letter 19 OCT 2011 from WCS

SALINE CO., IL

① SPRINGHOUSE A copy (Vol 19 No 5 JUN 2002) of the local history magazine may be found in RPH files - under Family History - Publications

△ This copy was provided to RPH by Cousin WILLIAM CLETUS SEARLES of the John U, III / Samuel U Subclan - John U Jim - Jonathan Berry U [CS 70]

WCS has written numerous articles for this magazine including one in this issue on the farm his Greatgrandparents. WILLIAM WALKER MOORE & SUSAN ELIZABETH BOURLAND, ages 23 & 16 in 1850, established in GALLATIN County IL before 1860. WCS visited the farm in recent years (1980-2000 era) and wrote of the changes since he knew the farm as a boy.

The address for the magazine is HEROD, IL which is in the NE corner of POPE County. It is in the Shawnee National Forest. SALINE Co., IL best part North of GALLATIN Co., IL to the NE.

Note - The GP of WCS were Jonathan Berry U and Mary Elizabeth Moore b 1867 - She would have been the D/o William Walker Moore - RPH

Vol 19 No 5 JUN 2002 was provided to RPH in a letter 19 OCT 2011 from WCS

FAMILY HISTORY - IL

{GEO FILE}

○ FAMILY HISTORY RESOURCES

On 5 AUG 2014 RPU located on the internet details about the Genealogy Society of Southern Illinois and printed details leading to notations to be placed in various files as follows:

FOR MORE SEE ↓

ORG FILE Δ GENEALOGY SOCIETY OF SOUTHERN ILLINOIS
(Serving the 28 most Southern counties)

GEO FILE Δ IL

ORG FILE Δ LOGAN COLLEGE
(AKA John A. Logan College)
(The GSSI has its headquarters & Library at Logan College, Carterville, IL)

PUBLICATIONS FILE

PUB FILE The Quarterly Journal of GSSI is
 Δ The SAGA OF SOUTHERN ILLINOIS
 GSSI also produces a periodic E-Newsletter