

WYATT

u

① Obituary Download by Jenna Lane 4 for RPH

**Paper:** News & Observer, The (Raleigh, NC)  
**Deceased:** JOYCE CARROLL MATTHEWS WARSAW  
**Date:** March 25, 1997

- Ms. Joyce Carroll Matthews passed away on Sunday, March 23, 1997, at home.

Ms. Matthews was the daughter of the late Gladys Laney Carroll, and Mr. Ottis S. Carroll, founder of Carrolls Foods of Warsaw. Ms. Matthews held the title of Chairperson of the Board of Carrolls Foods, at her death.

Surviving Ms. Matthews are three children: Jeffrey S. Matthews, Carroll Matthews Arthur and husband, William, and James C. Matthews, all of Warsaw; one grandchild, Will Arthur.

She was preceded in death by her husband, Dr. Otto Matthews.

Services will be held at 2 p.m.

Tuesday, March 25, 1997 at Warsaw Presbyterian Church. Rev. Earl Vaughan and Rev. Leighton McKeithen will officiate. Music will be presented by Barbara Carr and Shirley Benson. Pallbearers will be Sonny Faison, Wyatt Upchurch, Larry Chestnutt, Lynn Goad, Troy Smith, and Charles Nevison. Interment will follow at Devotional Gardens of Warsaw. Flowers will be gladly accepted, but memorials may be made to the Division of Pediatric Neuro-Oncology, Duke South Hospital, DUMC Box 3624, Durham, NC 27710 or to Warsaw Presbyterian Church, P.O. Box 863, Warsaw, NC 28398 A Community Funeral Home Service.

**Section:** News

**Page:** B6

**Copyright (c) 1997 The News and Observer**

- ① See Notes of 22 MAR 1979 Phone call Wayland C. U. to RPH  
Wyatt Greyll, he at home in Lee Co, NC, is son  
of Kurley Vstrage U of Mover / Puffer U class
- ② See Notes of RPH 14 JAN 1980 (call to Ouida Catherine U.  
She lists a Wyatt U as son of Kurley Vstrage U  
& also a Willie Gray U as a son.
- ③ In Bayley List - 1980 - Wyatt G. U  
Box 247  
Raeford, NC 28376 } In AF
- ④ From Lt 14 DEC 1990 Joseph Allan U of Fayetteville, AR  
to RPH - Newspaper & Date not stated.



Associated Press

### Trotting out the turkey

President Bush laughs as he is presented a Thanksgiving turkey by National Turkey Federation President Wyatt Upchurch from his farm in Raeford, N.C. The 60-pound gobbler, received in a traditional Rose Garden ceremony, got a presidential pardon and will live out its days at the Kidwell Farm, a children's petting zoo in Herndon, Va.

(5) From Jt1 19 NOV 1990 Patho Janet McGee to RPM



The Associated Press

Upchurch poses with some of the turkeys at his hatchery and farm near Raeford

## President Will Have Holiday Dinner On Tar Heel Turkey

THE ASSOCIATED PRESS

RAEFORD — When North Carolina sends Tom Turkey to Washington for an audience with President Bush, he won't just be strutting his stuff.

The 62-pound breeder, along with a stand-in, will represent the nation's top turkey-producing state, which is faring well this holiday season, agriculture officials say.

"There's a war going on, kind of like a gas war," said Wyatt Upchurch, president of the Tar Heel Turkey Hatchery in Raeford, which raised the two presidential birds. "The holiday demand has been good for growers but it's hurting the retailer. Chain stores are taking a beating."

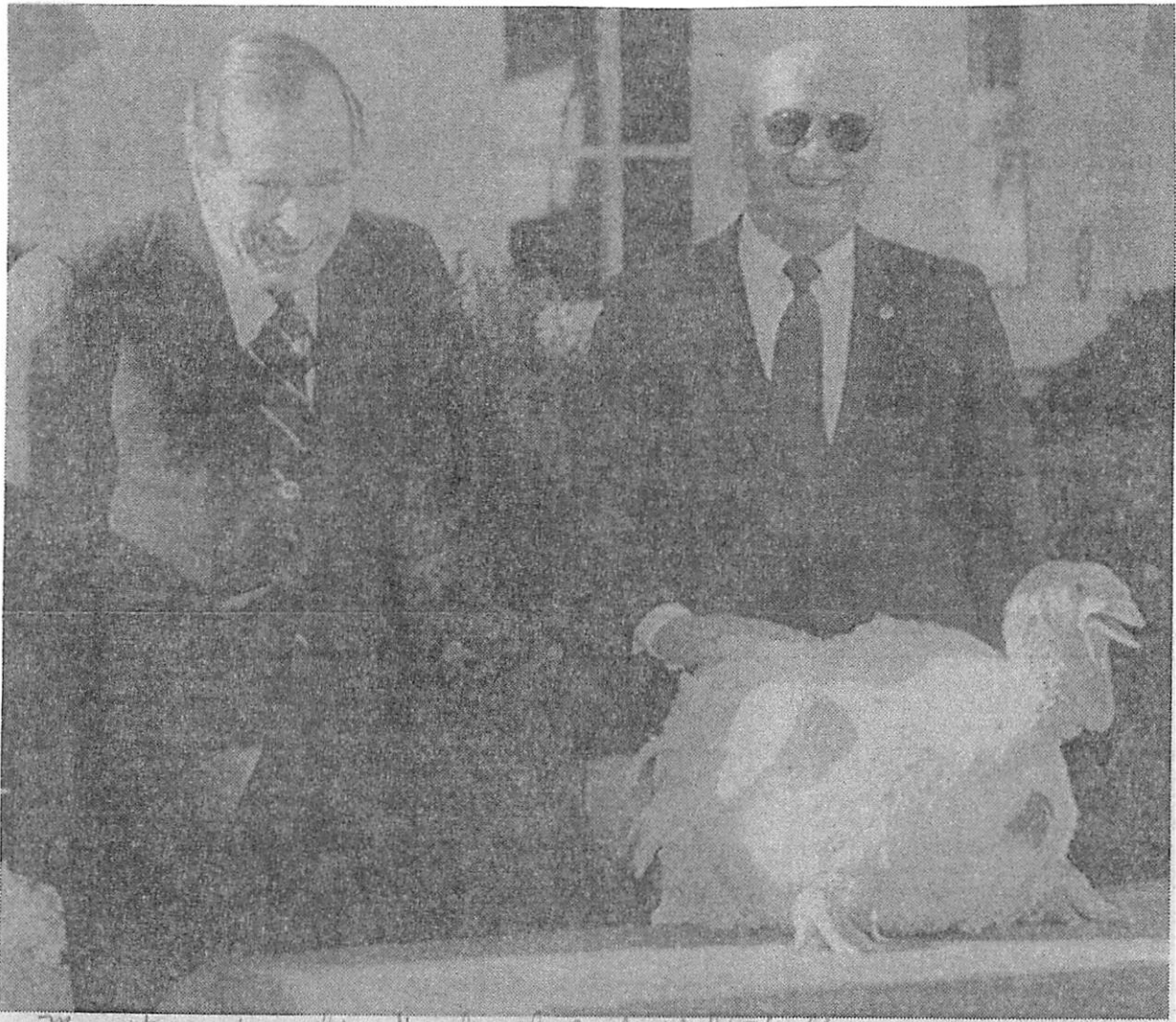
Wholesale prices for turkeys ranged from 67 cents to 74 cents a pound Friday. But supermarket

prices are running much lower as stores try to lure consumers into other purchases for their Thanksgiving feasts, Upchurch said.

The two birds representing North Carolina's turkey industry will be placed aboard an American Airlines flight today at Raleigh-Durham International Airport to Washington, for a Rose Garden ceremony tentatively set for 10 a.m. Wednesday.

NOTE: see associated article in 26 NOV 1990 issue of U.S. News & World Report. It seems quite clear that the turkey with President Bush is the same as one of the two shipped by Wyatt Gray. U - RPM

- (6) Item Rec'd 27 NOV 1990 by RPU from Truex Newman U. It was sent to him by his sister. It appeared in the Omaha World Herald



*My sister sent me this. It is from the Omaha World Herald*

## A Presidential Pat on the Back

This Thanksgiving turkey knows what it's like to have friends in high places. President Bush pats the turkey, presented Wednesday at the White House by the National Turkey Federation. In an annual display of holiday charity,

*Do he any relation to us?*

Bush pardoned the bird, which will live out its days at an animal farm outside Washington, never having to worry about sharing a plate with cranberries or candied yams. Turkey Federation President Wyatt Upchurch is at right.

- (7) See packet 27 APR 1993 Waylon Cline U Ad RPU  
Proper name = Wyatt Gray U b 22 APR 1935 and  
6 FEB 1954 Mary Frances Garner b 18 DEC 1934. They had  
two children. He has Tar Heel Turkey Hatchery, Inc  
in Raeford, NC



⑧ Two Artiles Reid 12 DEC 1990 by RPD from  
Patsy Penny Norton

## N.C. turkey presented to president

RAEFORD (AP) - When North Carolina sends Tom Turkey to Washington for an audience with President Bush, he won't just be strutting his stuff.

The 62-pound breeder, along with a stand-in, will represent the nation's top turkey-producing state, which is faring well this holiday season, agriculture officials say.

"There's a war going on, kind of like a gas war," said Wyatt Upchurch, president of the Tar Heel Turkey Hatchery in Raeford, which raised the two presidential birds. "The holiday demand has been good for growers but it's hurting the retailer. Chain stores are taking a beating."

Wholesale prices for turkeys ranged from 67 cents to 74 cents a pound Friday. But supermarket prices are running much lower as stores try to lure consumers into other purchases for their Thanksgiving feasts, Upchurch said.

The two birds representing North Carolina's turkey industry will be placed aboard an American Airlines flight today at Raleigh-Durham International Airport to Washington, for a Rose Garden ceremony tentatively set for 10 a.m. Wednesday.

The glory will be shortlived for



(AP laserphoto)

**Wyatt Upchurch owns Tar Heel Turkey Hatchery of N.C.  
He will donate a 50-pounder to the White House**

the turkeys, however. Their next stop is a petting farm in Herndon, Va., quite a change of pace for these prolific breeders.

For the rest of North Carolina's gobblers, life is not so lucky. The industry hopes to put 57 million turkeys to slaughter this year.

That's about 20 percent of the projected national turkey production but only about the amount Americans eat every Thanksgiving. It's about 5 million more birds than the record set last year in North Carolina.

"The market at the present is profitable for the growers, but this year in and out it's been pretty close to a break-even situation,"

Upchurch said.

As president of the National Turkey Federation, which represents the industry, the 55-year-old Upchurch earned the honor of donating the White House gobblers.

North Carolina became the No. 1 turkey state in 1981, in large part due to its temperate climate.

"Weather is one of our biggest advantages," Upchurch said. Like chickens, turkeys fear cold weather.

In years past, the booming turkey business has led to oversupply, causing prices to plunge and hurting hatchers like Upchurch.

Tuesday, November 13, 1990

# Lifestyles

## High Point Enterprise

## White house gets the bird



President Bu  
pets a turkey  
the Rose Gar  
of the White  
House on  
Wednesday a  
Wyatt Upchu  
president of  
National Tur  
Federation tl  
presented the  
bird, looks or  
The  
Thanksgiving  
turkey is give  
an animal far  
near  
Washington.

## OUTLOOK

### ONE WEEK

# The growing call to talk turkey on the Gulf

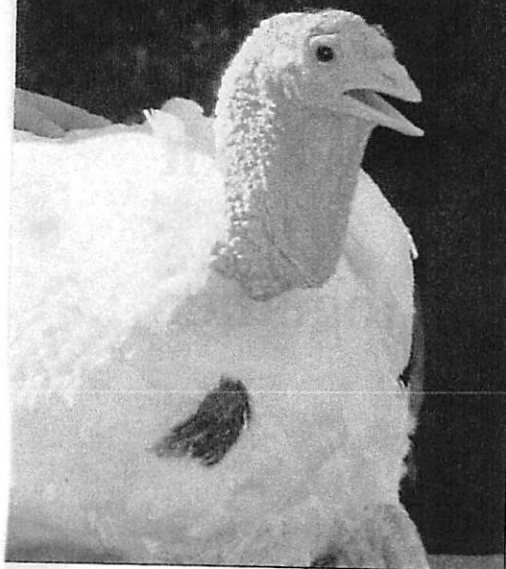
One of the President's many guises is Chief Druid, performing the same rituals every year to mark the turning of the seasons: Throwing out the first ball on Opening Day, or lighting the national Christmas tree. So it was that George Bush came face to face in the Rose Garden last week with an edible icon, the official Thanksgiving turkey, a 62-pound hunk of instant leftovers. After the obligatory joke — "it's great to finally be sharing the stage with someone I can call a turkey, and get away with it" — the President turned serious, invoking the American hostages and soldiers in the Persian Gulf. "Perhaps their sacrifice," he said, "will make those of us at home this Thanksgiving Day reflect even more deeply. . . ."

Beware the curse of answered prayers. Americans are in a reflective mood this holiday season, and they do not like what they see. As the economy sputters and stalls like an untuned engine, consumers are losing confidence. In public-opinion polls, 3 out of 4 say the country is headed down the wrong track. Barely half support the President's handling of the Persian Gulf crisis, down from 82 percent three months ago. It is no longer morning in America. The chill shadows of possible war and likely recession are falling long on the ground.

This somber mood contrasts sharply with the days immediately following Saddam Hussein's aggression. As the first U.S. troops headed for the Gulf, right behind them came the TV anchormen, safari shirts opened wide, proudly displaying their chest hair and their patriotism. But now, with cardboard Santa Clauses popping up in store windows, the TV postcards of kid soldiers have lost much of their charm. In hundreds of thousands of homes this year, there will be an empty chair where a soldier used to sit, and nobody knows when — or if — it will be filled again. The correspondents, who proclaimed months ago that the "post-Vietnam syndrome" was being buried in the sands of Saudi Arabia, may well have spoken too soon. The parents of today's soldiers belong to the Vietnam generation, and for them the memories have not faded. They remain deeply suspicious of any President who talks of war, and as they give thanks this week for their blessings, they are also asking increasingly urgent questions: Why have their children been sent to that distant desert? What vital national interests are really at stake there?

So far, George Bush and his aides seem unable to answer coherently. And because they have not explained fully and consistently why Saddam Hussein is an intolerable danger who must be eliminated, many families in America are puzzling over the reason for the empty chair at the dinner table this holiday. As he heads for the Persian Gulf to share Thanksgiving with his troops, the Commander in Chief will be faced with a most difficult job: To explain to the soldiers and their loved ones why they have come to that distant desert to risk their lives. □ BY STEVEN V. ROBERTS

*'Many families  
in America  
are puzzling  
over the reason  
for the empty  
chair at the  
dinner table  
this holiday'*





(9) - CONTINUED

DARRYL HEIKES - USN&WR



**Ritual of the season.** But after the traditional Rose Garden ceremony, Bush headed for Europe. Then, it's Thanksgiving in the Gulf



(9) - CONTINUED

DARRYL HEIKES - US&WR



**Ritual of the season.** But after the traditional Rose Garden ceremony, Bush headed for Europe. Then, it's Thanksgiving in the Gulf



⑩ Item handed to RPU by Patricia Lane on 16 SEP 1991 FROM: GREENSBORO DAILY NEWS SUN 18 AUG 1991 Greensboro, NC

HOKE CO, NC  
WYATT GREY U↑

# Ex-sheriff blames ouster on plotters

By TAFT WIREBACK  
Staff Writer

RAEFORD — For the last three years, Alex Norton was sheriff of Hoke County, a place he describes as having a lot in common with television's folksy, fictional Mayberry.

But this Mayberry, Norton says, had a dark side.



Norton

To hear Norton and his supporters tell it, the local political leadership plotted against him. Gossip spread like wild-fire. Racial tension festered. And some of Norton's own deputies turned against him.

In the end, a Superior Court judge removed Norton from office Aug. 5 on a petition filed by county officials and the local prosecutor. That action made Norton one of the few sheriffs in recent North Carolina history to be ousted by court order for something other than criminal misconduct.

"What happened to me, it's like taking a fish out of the water and throwing it on the bank," Norton said last week.

To hear Norton's critics tell it, Norton has only himself to blame. After a three-week hearing in June, Judge Donald Stephens found Norton unfit for office because Norton once ordered some court papers falsified and because he failed to arrest a jail employee for carrying a gun illegally.

Good riddance, said Wyatt Upchurch, chairman of the Hoke County Board of Commissioners.

"I told Alex, 'You better handle it and handle it correctly because there are people out there watching you,'" Upchurch said of the incident last February involving the jail cook.

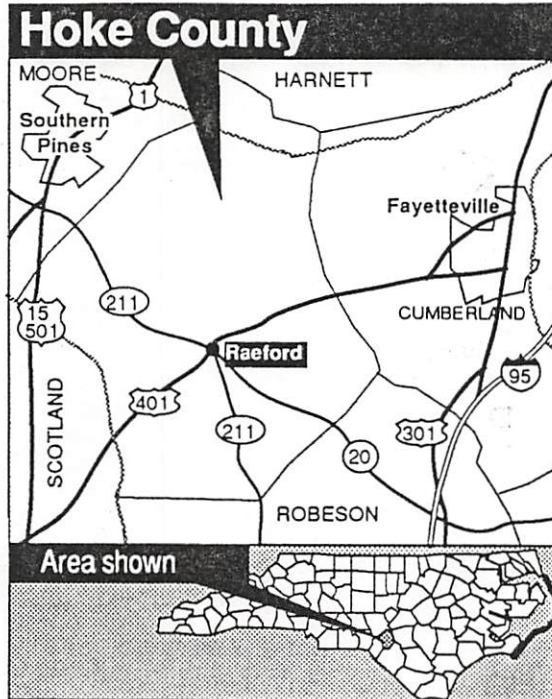
"Oh," he said, "I'll be careful with it." I reckon he did handle it. He handled it his way but not by the

law, which is how I wanted it handled."

Upchurch said Norton had had other problems, including an inability to keep department spending within his yearly budget — important in a rural county that ranks last in the state in per-capita income and tax base.

Raeford, the county seat, is about 100 miles southeast of Greensboro. The area is known for turkey farms and a large turkey-processing operation, House of Raeford.

Norton, 60, a 29-year veteran of the department, denies the criticism and the charges that led to his ouster. But he declines to discuss specifics because he is appealing Judge Stephens' decision to the N.C. Court of Appeals.



His friends aren't so reticent.

"Look, this was a political thing," said Clayton Buoyer, Norton's campaign manager in last November's election. "They were out to get him since day one."

Norton won the election by fewer than 300 votes. His opponent — former Army game warden James Madden — almost immediately asked for the State Bureau of Investigation probe that ultimately led to the sheriff's ouster.

Norton had been appointed sheriff in 1988 to finish out two years remaining in the term of the previous sheriff, David Barrington, who had retired. Norton had been Barrington's chief deputy.

One reason Upchurch and other leaders didn't like Norton was because he had heavy support among the county's black and Native American voters, Buoyer contends. The two minorities make up 56 percent of the county's population of 22,856.

Jimmy Morrissey, head of the Hoke chapter of the National Association for the Advancement of Colored People, said he worried about Norton's fate ever since receiving an anonymous call the day after the election last year.

"It was early in the morning, 7 or 7:30. A white male voice," Morrissey said. "He said, 'I just thought you ought to know, we're going to get rid of that nigger-loving sheriff.'"

Others dispute that racism was linked to Norton's ouster, noting that the county board is made up of three black and two white commissioners. The board voted unanimously this spring to join District Attorney Jean Powell in the petition that led to Norton's ouster.

"If anybody is trying to paint the county commissioners as part of a posse out to get the sheriff, that's really misdirected," said board member Thomas Howell.

"We had nothing to do with investigating and having that petition brought to us. Our vote was just saying that these issues should be decided in the proper forum, the court."

Buoyer said some deputies in the department wanted Norton's job and worked with his foes. Two deputies had been unsuccessful applicants for the job in 1988. Several testified against Norton during the three-week hearing.

Norton and his supporters say he also had an uneasy relationship with Powell, the district attorney. While they weren't close friends, Powell said, she thought they had a satisfactory working relationship before the petition.

She bristles at suggestions by Norton partisans that the charges against him weren't serious or that they should have been handled as reprimands. Forging legal documents, Powell says, undermines the credibility of the entire court system.

In the case of the armed jail cook — a woman on probation for a cocaine offense — Judge Stephens ruled that Norton chose not to press

charges to avoid negative publicity. Probation rules prohibited her from owning a firearm.

"It was not only of benefit to her but of benefit to him," Powell said of Norton's decision not to charge the cook. "I think that is a serious failure to perform a duty of his office."

Norton's supporters note that the previous sheriff, Barrington, admitted ordering drunken-driving charges dropped against the daughter of Barrington's predecessor, former Hoke Sheriff David Hodgkin. The charges were reduced to driving on the wrong side of the road.

(10) - CONTINUED

(1-8)

Yet a judge later ruled Barrington guilty "of poor judgment rather than an act of willful misconduct."

"That's a double standard," said Norton supporter J.H. Blue.

Norton's troubles started two days after the election last year. The man he beat, James Madden, complained about the falsified court documents to the State Bureau of Investigation.

He told agents that in late 1989, Norton ordered a deputy to erase another officer's signature from some court papers and substitute his own. Norton allegedly wanted to conceal the age of the first deputy, who was too young to be working for the department.

After SBI agents told Powell about that complaint, she asked for a formal investigation.

"Once I got that report, there were other complaints that started coming to my attention," Powell said.

She took her evidence to the Board of Commissioners, and that board authorized the county attorney to support the removal petition. Norton's other alleged failings ranged from inept burglary investigations to a juvenile inmate being raped at the county jail because guards were lax.

During the three-week hearing, nine of the original 11 petition charges against Norton were either dismissed by Judge Stephens or withdrawn by Powell and County Attorney Duncan McFadyen.

Madden, the unsuccessful challenger, said he doesn't feel any animosity toward Norton. "He wasn't doing the doggone job," he said.

Since Norton's ouster, Madden has joined the department's auxiliary and has applied to replace Norton as sheriff. The county board will appoint a successor later this year. The county coroner, Frank Crumpler, was named interim sheriff.

For his part, Norton said he's just biding his time, puttering around the house and hoping the Court of Appeals will reinstate him.

(11) See ltr 3 NOV 1999 Waylan Child U Ed R 14

WGU and Buffalo Presbyterian Church, Sanford, Lee Co, NC Mary Frances Garner to Lee Co, NC. They have only two children

(12) FROM 1995 CD-ROM

Upchurch Charles J  
Upchurch M V  
Upchurch Wyatt G ↑

347 Sabra Dr  
2912 Park Ave

Wilmington  
Wilmington  
Wilmington

NC 28405-3844 910-392-6556  
NC 28403-4033 910-251-0762  
NC 28405 910-686-9983

(13) WGU and his wife Mary & daughter Jodie attended the Upchurch Festival in Raeford, NC on 1 MAY 2007.  
He was sent a copy of U 28#1 on 25 JUN 2007



Item Recd 10 DEC 1990 by RPU from Robert Williams 4  
The Asheville Citizen 13 NOV 1990 Asheville, NC

1-9

## N.C. Gobbler Has Date In Rose Garden

The Associated Press

RAEFORD — North Carolina's turkey industry owes a lot to birds such as the one chosen to represent the state in an audience with President Bush.

The breeder turkey, weighing 62 pounds, is only a little more than a year old, but already it has serviced thousands of hens, doing its part to make the state's turkey industry the most productive in the nation.

The turkey, along with a stand-in similar in size, will board an American Airlines flight Tuesday at Raleigh-Durham International Airport to Washington, where it will be the guest of honor at a Rose Garden ceremony tentatively set for 10 a.m. Wednesday.

It's North Carolina's way of showing off one of its biggest agricultural commodities.

The glory will be shortlived for the turkeys,

however. Their next stop is a petting farm in Herndon, Va., quite a change of pace for these prolific breeders.

For the rest of North Carolina's gobblers, life is not so lucky. The industry hopes to put 57 million turkeys to slaughter this year.

That's about 20 percent of the projected national turkey production but only about the amount Americans eat every Thanksgiving. It's about 5 million more birds than the record set last year in North Carolina.

"The market at the present is profitable for the growers, but this year in and out it's been pretty close to a break-even situation," said Wyatt Upchurch, president of the Tar Heel Turkey Hatchery in Raeford, which raised the two presidential birds.

As president of the National Turkey Federal, which represents the industry, the 55-year-old Up-

church earned the honor of donating the White House gobblers.

"There's a war going on, kind of like a gas war. The holiday demand has been good for growers but it's hurting the retailer," he said. "Chain stores are taking a beating."

Wholesale prices for turkeys ranged from 67 cents to 74 cents a pound Friday, the last day for which federal agriculture figures were available.

But supermarket prices are running much lower as stores try to lure consumers into other purchases for their Thanksgiving feasts, Upchurch said.

While the gobbler growers are faring well for the holiday season, it's the rest of the year that has Upchurch worried.

North Carolina became the No. 1 turkey state in 1981, in large part due to its temperate climate.

The Asheville Citizen 11-13-90



— AP Photo

### Presidential Turkey

Wyatt Upchurch, owner of Tar Heel Turkey Hatchery of Raeford, will supply a 62-pound turkey to the White House for Thanksgiving. Upchurch is also president of the National Turkey Federation.

0

CONTINUED

WYATT GA441 u

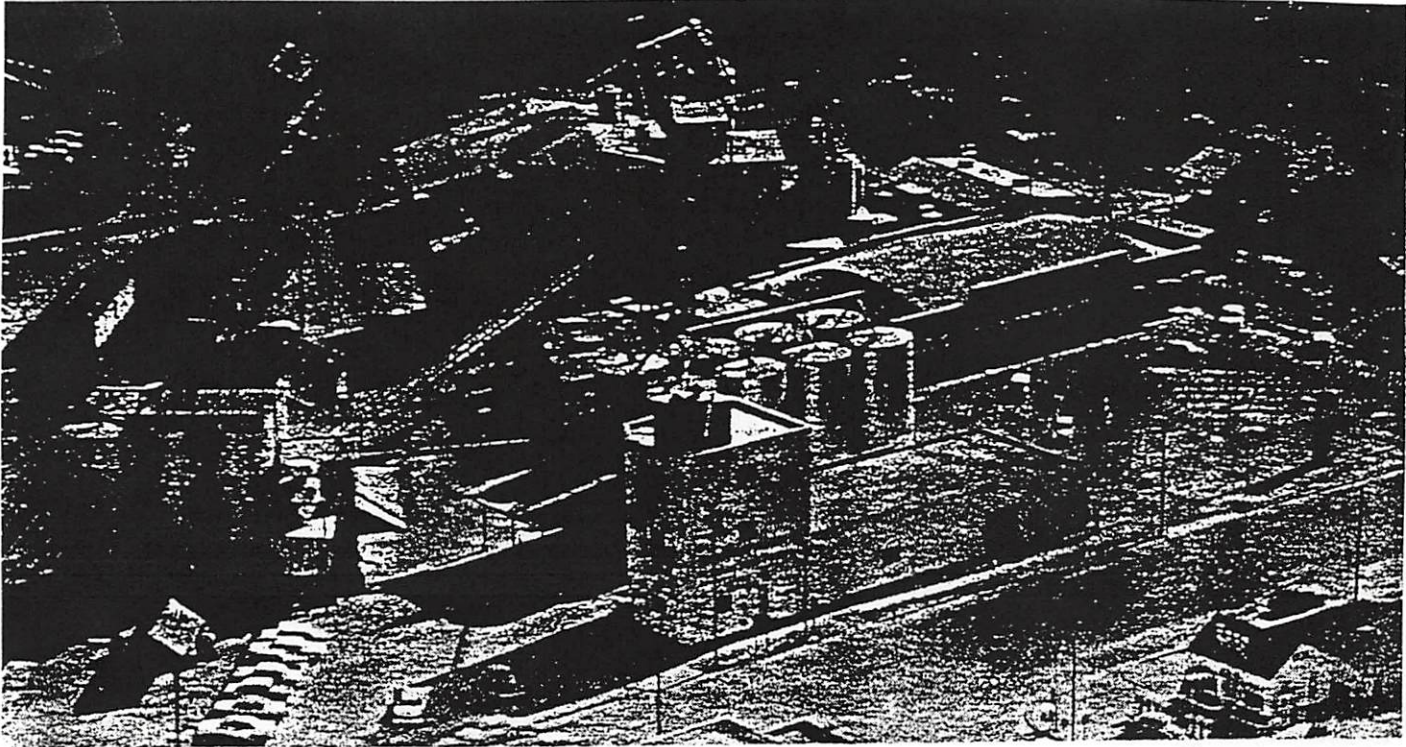
PG 10  
1-10

XIN-3664



From: Thomas Benton U, Sr Scripbook 20 MAY 1999

# New Mill Will Save \$50,000 a Year



Aerial view of company's physical properties—grain storage tanks (far left); flour mill and storage (center); old mill building (center background), and attached to this building (right), new mill, storage tanks and bulk load-out station.

A = THOMAS UPCHURCH  
CAMERON, SR

That's the estimate of Tom Cameron, who  
heads the diversified operations of Upchurch  
Milling and Storage Co., Raeford, N. C.

B. T. B U = THOMAS BENTON  
U, SR

C. H. A. CAMERON = HUGO  
ARCHIE CAMERON

D.  
L. M. U = LEWIS MARVIN  
U, SR

E. WYATT U = WYATT  
GRAY U

F. DONALD BENNETT  
CAMERON, SR

A NEW plant for "Live At Home Feeds" was recently placed in operation at Raeford, N. C., by the Upchurch Milling & Storage Co. Built at a cost of \$200,000, the mill is completely modern in every respect; so modern, in fact, that only two mixing items are handled manually—vitamin premixes and salt. Both are packed in red bags for easy identification to prevent mixing errors.

Company President Tom Cameron estimates that the new feed

mill will save the company about \$50,000 annually through the bulk handling of ingredients and finished feeds, increased production, better quality control and less labor. Cameron singled out the materials handling systems and electronic control panels as the most important factors in reducing costs and improving quality. The business was founded in 1916 by Cameron's grandfather, T. B. Upchurch, and father, H. A. Cameron. The unusual brand name for the

Article 57 (46-50) - only  
Pg 46 Copied for Briefing  
of "A" → "F"

Article copied MAY 1963



1 MAY 2007 - TUE Water of All Day Trip to Raeford, NC  
to give an Upchurch Lecture - RPU picked up Jim Jones  
at 7:30 AM and we reached Raeford, NC at 9:30 AM

- AT Raeford 9:30 AM - 5:00 PM

9:30-11:00 Elsie Carter (D/O T.B.U. Jr) gave RPU, Jim  
Nancy & Alan a tour of the area - city, House, Farm,  
Cemetery. Learned T.B.U. Jr lost a leg.

11:00 AM - 1:00 PM Met people arriving for the event  
& had lunch. Two people brought articles about  
Hoyt U. Wyatt U of the Meade U/ Ruppins U Subclass  
was present & reported that his late Waylon  
Clyde U of El Paso, TX had a form of skin  
cancer but is now recovering. He tried to  
reach him by phone but could not.

About 35 people attended the event and they  
seemed to appreciate my talk & my efforts.  
This is the first "reunion" they have had in  
quite a few years. One couple came from  
Martinsburg, VA.

After the lunch we visited the local museum  
which is only a few years old. They borrowed  
50,000 to add to a 200,000 gift and bought a  
square block with a grand period house & they  
are now debt free. The collection & its display  
are impressive. It spans Raeford & Ashe Co.

There is a minimal presence of the Upchurch family

There are 2 Upchurch operations still present  
(+ the farms?). T.B.U. Jr gave a large donation  
for the Black school (now integrated) which  
is called Upchurch School. Elsie taught there.



WYATT GRAY U

3-2

NC BIRTHS - 5 SEP 2005 - PETERSON - MOORE CO PT3 F = UPCHURCH  
4 1920-1959

Upchurch	8 Jan 1921	Male	Moore	G M Upchurch	Lula Wilson
Upchurch	23 Apr 1921	Male	Moore	Newland Upchurch	Maud Ritter
John A Upchurch	20 Jul 1921	Male	Moore	Lonnie Upchurch	Mattie McDonald
Harold Vernon Upchurch	28 Apr 1923	Male	Moore	Roland H Upchurch	Lucy E E Kidd
Thomas Franklin Upchurch, Jr.	21 Oct 1923	Male	Moore	Thomas Franklin Upchurch, Sr.	Mamie Mcneill
Upchurch	14 Feb 1927	Male	Moore	Chas K Upchurch	Bessie Brady
Upchurch	20 Mar 1927	Female	Moore	E N Upchurch	Maud Ritter
Nellie Lois Upchurch	8 Jun 1930	Female	Moore	Heber G Upchurch	Ella Frances Hunter
Virginia Mae Upchurch	3 Jun 1931	Female	Moore	G M Upchurch	Lula Wilson
Upchurch	20 Aug 1931	Male	Moore	E N Upchurch	Maude E N Mrs. Upchurch
William Herbert Upchurch	17 Mar 1933	Male	Moore	William Alfred Upchurch	Mamie Mcneill
Upchurch	30 Sep 1932	Male	Moore	E N Upchurch	Maude Ritter
Upchurch	30 Nov 1934	Male	Moore	E N Upchurch	Maude Ritter
Upchurch	16 Nov 1935	Female	Moore	Frank Hampton Upchurch	Alma Estelle Riddle
Rachel Pauline Upchurch	3 Jul 1936	Female	Moore	Willie Jennina Upchurch	Jemima
Upchurch	13 Aug 1937	Male	Moore	Glenn Upchurch	Allie Craven
Jimmie Ray Upchurch	14 Jun 1938	Male	Moore	Glenn Upchurch	Allie Caviness
Upchurch	15 Nov 1938	Female	Moore	Willard N Upchurch	Evelyn Smith
Upchurch	2 Dec 1939	Male	Moore	W N Upchurch	Evelyn Smith
Ernest Clinton Upchurch	4 Jan 1941	Male	Moore		Jemima Upchurch
Jackie Franklin Upchurch	23 Jan 1941	Male	Moore	Willard N Upchurch	Evelyn Smith
Upchurch	12 Jul 1941		Moore	Glenn Upchurch	Allie Caviness
Upchurch	9 Jul 1942	Male	Moore	Marvin C Upchurch	Annie R Farrar
Josephine Upchurch	24 Aug 1942	Female	Moore		Jemirera Upchurch
Upchurch	17 Sep 1942	Male	Moore	W N Upchurch	Evelyn Smith
Fredrick Abel Upchurch	5 Jan 1944	Male	Moore	Willard Newton Upchurch	Evelyn Smith
Margaret Lou Upchurch	9 Aug 1945	Female	Moore	Marvin Clinton Upchurch	Annie Ruth Farror
Delorse Upchurch	15 Jul 1946	Female	Moore	Willard Newland Upchurch	Blennie Smith
Patricia Ann Upchurch	31 Dec 1946	Female	Moore	Willard Newland Upchurch	Blennie Evelyn Smith
Larry Vernon Upchurch	28 Oct 1948	Male	Moore	Harold Upchurch	Dorothy Hussey
Connie Maria Upchurch	19 Oct 1951	Female	Moore	Willard Newland Upchurch	Blinnie Evelyn Smith
Robert Junior Upchurch	25 Nov 1951	Male	Moore		Rachael Pauline Upchurch
Richard Michael Upchurch	24 Apr 1953	Male	Moore	William Glenn Upchurch	Allie Berta Caviness
Linda Diana Upchurch	5 Mar 1954	Female	Moore		Rachel Pauline Upchurch
Ann Swindell Upchurch	22 Jun 1954	Female	Moore	Thomas Joseph Upchurch	Dawn Ann Swindell
Deronda Gail Upchurch	13 Apr 1955	Female	Moore	Marion Ennis Upchurch	Bernice Mccrimon
Clyde Emmett Upchurch III,	20 Oct 1956	Male	Moore	Clyde Emmett Upchurch Jr.	Lorenna Love Falls
Jodi Ann Upchurch	29 Mar 1957	Female	Moore	Wyatt Gray Upchurch	Mary Frances Garner
Anthony Newland Upchurch	27 Nov 1958	Male	Moore	Bill Upchurch	Phyllis Moore Flinchum

WYATT GRAY U

3-3

NC BIRTHS - 5 SEP 2005 - PETERSON - MOORE CO PT 4 1660-1998 F=UPCHURCH

Wyatt Jeffery Upchurch	16 Sep 1960	Male	Moore	Wyatt Gray Upchurch	Mary Frances Garner
Lisa Sharon Upchurch	30 May 1961	Female	Moore	Johnnie Darrell Upchurch	Omie Lou Hussey
Michelle Dawn Upchurch	2 Oct 1963	Female	Moore	Jackie Franklin Upchurch	Brenda Sue Oldham
Wayne Allen Upchurch	29 Feb 1964	Male	Moore	Jerry Wayne Upchurch	Twila Janette Allen
Amy Yvette Upchurch	11 May 1965	Female	Moore	Jackie Frankie Upchurch	Brenda Sue Oldham
Darrell Lee Upchurch	6 Jan 1966	Male	Moore	Johnnie Darrell Upchurch	Omie Lou Hussey
Elizabeth Allen Upchurch	2 Apr 1966	Female	Moore	Lewis Marvin Upchurch Jr.	Betty Allen Daniel
Tammy Renee Upchurch	13 Jul 1967	Female	Moore	Johnny Darrell Upchurch	Omie Lou Hussey
Kelly Jean Upchurch	9 Jan 1969	Female	Moore	Johnny Darrell Upchurch	Omie Lou Hussey
Karen Beth Upchurch	15 Mar 1969	Female	Moore	Donald Gene Upchurch	Shelby Jean Chase
Lewis Marvin Upchurch	14 May 1969	Male	Moore	Lewis Marvin Upchurch Jr.	Betty Allen Daniel
Jackie Shane Upchurch	25 Dec 1969	Male	Moore	Jackie Franklin Upchurch	Brenda Sue Oldham
Vernon Chad Upchurch	17 Mar 1971	Male	Moore	Jackie Franklin Upchurch	Brenda Sue Oldham
Johnny Newland Upchurch	9 Jun 1971	Male	Moore	Johnny Darral Upchurch	Omie Lou Hussey
Mollie Benton Upchurch	19 Aug 1971	Female	Moore	Lewis Marvin Upchurch Jr.	Betty Allen Daniel
William Lawrence Upchurch III,	23 Dec 1971	Male	Moore	William Lawrence Upchurch II,	Joyce Anne Langdon
James Odell Upchurch	13 Oct 1973	Male	Moore	James Robert Upchurch	Linda Diane Campbell
Kristy Lynn Upchurch	28 May 1974	Female	Moore	Frederick Able Upchurch	Neva Grace Williams
Dana Marie Upchurch	25 Sep 1974	Female	Moore	Tommy Mc Millian Upchurch	Margaret Doris Maness
James Allen Upchurch	9 Feb 1976	Male	Moore	James Franklin Upchurch	Norma Gail Lee
Brian Barlett Upchurch	27 Sep 1976	Male	Moore	William Lawrence Upchurch	Joyce Anne Langdon
Bradley Drew Upchurch	31 Jan 1977	Male	Moore	Tommy Mc Millian Upchurch	Margaret Doris Maness
William Glenn Upchurch	14 Jan 1979	Male	Moore	Richard M Upchurch	Sara F Williams
William Robert Upchurch	21 Feb 1979	Male	Moore	James R Upchurch	Linda D Campbell
Lauren Ashley Upchurch	23 Sep 1983	Female	Moore	Larry Vernon Upchurch	Nina Margaret Williams
Alexandria Christian Upchurch	5 Nov 1983	Female	Moore	Donald Gene Upchurch	Rosa Jeannette Stone
Amber Lynn Upchurch	20 Jul 1988		Moore	Steven Frederick Upchurch	Freida Freeman
Tory Kwame Rayshawe Upchurch	3 Nov 1989		Moore	Not Stated	Felicia Cordelia Rosetta Gardn
William Lawrence Upchurch	2 May 1990		Moore	Larry Vernon Upchurch	Nina Margaret Williams
Johnny Austin Upchurch	7 Jun 1998	Male	Moore	Johnny Newland Upchurch	Melissa Ann Mccaskill



WYATT GRAY U

3-4

NC BIRTHS - 5 SEP 2005 - PETERSON - LEE CO PART 35  
1915 - 1951 FAT-UPCHURCH

Ouida Upchurch	17 Dec 1915	Female	Lee	Carl E Upchurch	Annie Thomas
Upchurch	14 Nov 1917		Lee	Will Upchurch	Carrie McCormack
Upchurch	11 May 1918	Male	Lee	C E Upchurch	Annie K Thomas
Unnamed Upchurch	18 Jun 1920	Male	Lee	Angus Upchurch	Almeria Edwards
Carmetia Upchurch	20 Jan 1922	Female	Lee	Carley E Upchurch	Annie Thomas
Lonnie Willie Evander Upchurch	20 May 1923	Male	Lee	Lonnie Upchurch	Mattie McDonald
Ernest M Upchurch	7 Jul 1924	Male	Lee	O Jackson Upchurch	Clara Bell Myers
Upchurch	22 Oct 1924	Female	Lee	Carley Upchurch	Annie Thomas
Tasker Mc L Upchurch	20 Oct 1925	Male	Lee	Carley Mc Leod Upchurch	Annie Thomas
Ireland Stanfield Upchurch	2 Jun 1926	Male	Lee	Kurley U Upchurch	Elizabeth S Campbell
Mattie E Upchurch	23 Jun 1926	Female	Lee	Lonnie Upchurch	Mattie I McDonald
Emerel ?? Upchurch	11 Dec 1926	Male	Lee	Rupert H Upchurch	Marv H Bell
Doris C Upchurch	28 Jun 1927	Female	Lee	Kurley V Upchurch	Sulu Campbell
Walter Avron Upchurch	30 May 1928	Male	Lee	Lonnie Upchurch	Mattie McDonald
A Buron Upchurch	21 Aug 1929	Male	Lee	Kurley Upchurch	Sulie Campbell
Jesse Upchurch	15 Aug 1930	Male	Lee	Lonnie Upchurch	Mattie McDonald
Waylon Cline Upchurch	23 Jul 1931	Male	Lee	Kurley Ustrage Upchurch	Elizabeth Sulu Campbell
Alvah Melvin Upchurch	10 Feb 1934	Male	Lee	Curley Upchurch	E Sula Campbell
Darcenia Mae Upchurch	13 Aug 1934	Female	Lee	Illegitimate	Lillie Upchurch
<u>Wyatt Gray Upchurch</u> ↑	22 Apr 1935	Male	Lee	K U Upchurch	Sulu Campbell
Roger Clifford Upchurch	21 Dec 1935	Male	Lee	Hudge Upchurch	Mary Melen Bell
Arlis Lindsey Upchurch	30 Mar 1937	Male	Lee	Kurley Upchurch	Sulu Campbell
Henry Lyles Upchurch	11 Oct 1938	Male	Lee	F C Upchurch	Katherine Winfield
Jason Blue Upchurch	2 Mar 1939	Male	Lee	Claude Upchurch	Bethenia Baker
Howard B Upchurch Jr.	14 Aug 1941	Male	Lee	Howard Upchurch, SR	Harriet W Harry
Sandra Upchurch	23 Aug 1942	Female	Lee	E C Upchurch	Mary Alice Kelly
Joe Ann Upchurch	20 Jul 1946	Female	Lee	Frank Upchurch	Alberta Collins
Carver Lee Upchurch	24 Dec 1947	Male	Lee	Winston Upchurch	Clara Esther Brown
Jessie Lee Upchurch	16 May 1948	Male	Lee		Kittie J Upchurch
Tonny Edward Upchurch	12 Nov 1948	Male	Lee	Edward T Upchurch	Ellon Dennis
Linda Ann Upchurch	13 Sep 1949	Female	Lee	Winston Upchurch	Clara E Brown
Brenda Ann Upchurch	23 Feb 1950	Female	Lee	James B Upchurch	Lucy F White
Mary Lillian Upchurch	31 Oct 1950	Female	Lee	Emeral U Upchurch	Betty B Lett
Barbara Jean Upchurch	3 Mar 1951	Female	Lee	Winston Upchurch	Clara Brown
Claude Upchurch III,	16 Sep 1951	Male	Lee	Claude Upchurch Jr.	Lillie Brown

NC MARRIAGES-SEPO5-PETERSON- LEE CO

Celia Upchurch	Female	Dave McDonald	27 Feb 1910	Lee
Lowney Upchurch	Male	Mattie McDonald	14 Nov 1916	Lee
William A Upchurch	Male	Almura Edwards	14 Jan 1920	Lee
Kurley U Upchurch	Male	Sulu Campbell	26 Nov 1925	Lee
Rupert H Upchurch	Male	Hellen Bell	25 Feb 1926	Lee
R B Upchurch	Male	Maude Crews	23 Oct 1928	Lee
R P Upchurch	Male	Minnie Pattishall	31 Aug 1929	Lee
Will Upchurch	Male	Mamie Mcneill	11 Apr 1935	Lee
Jessie M Upchurch	Female	Wm Howard Espey	15 Apr 1936	Lee
Rondo B Upchurch	Male	Nancy J Scoggins	10 Nov 1935	Lee
Winston Upchurch	Male	Clara Esther Brown	18 Feb 1946	Lee
Sarah J Upchurch	Female	Nelson Alex Patterson	30 Sep 1950	Lee
Meta Upchurch	Female	Hamp Beck	5 Mar 1951	Lee
Betty Upchurch	Female	Henry Albert Garner	5 Dec 1952	Lee
<u>Wyatt Gray Upchurch</u>	Male	Mary Frances Garner	6 Feb 1954	Lee
Alvah Melvin Upchurch	Male	Meta Amanda Morgan	16 Jun 1957	Lee
Milton Upchurch	Male	Pauline Marks	23 Oct 1957	Lee
Arliss Lindsay Upchurch	Male	Sidney Ann Epps	14 Jun 1958	Lee
Anita Upchurch	Female	Joseph Reid Spivey	4 Nov 1966	Lee
Mary Lillian Upchurch	Female	John Joseph Bradley	5 Apr 1969	Lee
Arliss Lindsay Upchurch	Male	Nancy Oldham Garner	14 Aug 1971	Lee
Linda Dianne Upchurch	Female	Ronald Eric Vaughn	18 Aug 1973	Lee
Mary Lillian Upchurch	Female	Michael Anthony Barnard	15 Jun 1975	Lee
Claude Upchurch III,	Male	Carolyn Deborah Maxwell	23 Dec 1976	Lee
Vickie Lynn Upchurch	Female	Ronald Scott Gaster	1 Jul 1978	Lee
Linda Fay Upchurch	Female	Henry Lee Johnson	27 May 1980	Lee
Rhonda Lorraine Upchurch	Female	J Carlos Zarate	18 Jan 1984	Lee
Robert Mitchell Upchurch	Male	Lessie Gearldine Millhouse	29 Dec 1984	Lee
Alvah Mark Upchurch	Male	Donna Sharlene Morrison	23 Feb 1984	Lee
Cassandra Ann Upchurch	Female	Stevie Kyle Sellers	1 Apr 1986	Lee



WYATT JEFFERY U (4-1) XID- 32508

① From Packet 27 APR 1993 Waylen Cline U & RPA

I. Kurley Vstrage U of the Moore U / Pappin U  
Suburban - Raper U Line.

A. Wyatt Gray U b 22 APR 1965 (Lee Co, NC)

md 6 FEB 1994 Mary Frances Garner b 18 DEC 1934

1. Jodi Ann U b 29 MAR 1957 md 3 JUN 1977

Clarence Wayne Miller b 28 MAR 1956

a. Megan Suzanne Miller b 10 NOV 1981

b. Sarah Catherine Miller b 17 DEC 1986

2. Wyatt Jeffery U b 16 SEP 1960 d 7 OCT 1976  
(died of leukemia)

Wyatt Gray U owns the Tarheel Turkey Hatchery in Raeford,  
NC. Wayne works at the Hatchery. Jodi works for  
the Hoke Co Dept of —. Jodi & Wayne live in Raeford, NC

② See It 3 NOV 1998 Waylen Cline U & RPA

WJUG b Pinelhurst, Moore Co, NC d Moore Co, NC

Bur - Raeford, Hoke Co, NC

③ North Carolina Death Records 1968-1996  
UPCHURCH, WYATT JEFFREY Birth Date: 16 September 1960  
Death Date: 07 October 1976  
Gender: Male Race: White  
Age: 16 Years Place of Death: Hoke, North Carolina  
Residence: Hoke, North Carolina Marital Status:  
Never Married  
Attendant: Physician Mode of Burial: Burial in state  
Hospital:

# WYATT JEFFERY U

NC BIRTHS - 5 SEP 2005 - PETERSON - MOORE CO PT 4 F=UPCHURCH 1660-1998

Wyatt Jeffery Upchurch ↑	16 Sep 1960	Male	Moore	Wyatt Gray Upchurch	Mary Frances Garner
Lisa Sharon Upchurch	30 May 1961	Female	Moore	Johnnie Darrell Upchurch	Omie Lou Hussey
Michelle Dawn Upchurch	2 Oct 1963	Female	Moore	Jackie Franklin Upchurch	Brenda Sue Oldham
Wayne Allen Upchurch	29 Feb 1964	Male	Moore	Jerry Wayne Upchurch	Twila Janette Allen
Amy Yvette Upchurch	11 May 1965	Female	Moore	Jackie Frankie Upchurch	Brenda Sue Oldham
Darrell Lee Upchurch	6 Jan 1966	Male	Moore	Johnnie Darrell Upchurch	Omie Lou Hussey
Elizabeth Allen Upchurch	2 Apr 1966	Female	Moore	Lewis Marvin Upchurch Jr.	Betty Allen Daniel
Tammy Renee Upchurch	13 Jul 1967	Female	Moore	Johnny Darrell Upchurch	Omie Lou Hussey
Kelly Jean Upchurch	9 Jan 1969	Female	Moore	Johnny Darrell Upchurch	Omie Lou Hussey
Karen Beth Upchurch	15 Mar 1969	Female	Moore	Donald Gene Upchurch	Shelby Jean Chase
Lewis Marvin Upchurch	14 May 1969	Male	Moore	Lewis Marvin Upchurch Jr.	Betty Allen Daniel
Jackie Shane Upchurch	25 Dec 1969	Male	Moore	Jackie Franklin Upchurch	Brenda Sue Oldham
Vernon Chad Upchurch	17 Mar 1971	Male	Moore	Jackie Franklin Upchurch	Brenda Sue Oldham
Johnny Newland Upchurch	9 Jun 1971	Male	Moore	Johnny Darral Upchurch	Omie Lou Hussey
Mollie Benton Upchurch	19 Aug 1971	Female	Moore	Lewis Marvin Upchurch Jr.	Betty Allen Daniel
William Lawrence Upchurch III,	23 Dec 1971	Male	Moore	William Lawrence Upchurch II,	Joyce Anne Langdon
James Odell Upchurch	13 Oct 1973	Male	Moore	James Robert Upchurch	Linda Diane Campbell
Kristy Lynn Upchurch	28 May 1974	Female	Moore	Frederick Able Upchurch	Neva Grace Williams
Dana Marie Upchurch	25 Sep 1974	Female	Moore	Tommy Mc Millian Upchurch	Margaret Doris Maness
James Allen Upchurch	9 Feb 1976	Male	Moore	James Franklin Upchurch	Norma Gail Lee
Brian Barlett Upchurch	27 Sep 1976	Male	Moore	William Lawrence Upchurch	Joyce Anne Langdon
Bradley Drew Upchurch	31 Jan 1977	Male	Moore	Tommy Mc Millian Upchurch	Margaret Doris Maness
William Glenn Upchurch	14 Jan 1979	Male	Moore	Richard M Upchurch	Sara F Williams
William Robert Upchurch	21 Feb 1979	Male	Moore	James R Upchurch	Linda D Campbell
Lauren Ashley Upchurch	23 Sep 1983	Female	Moore	Larry Vernon Upchurch	Nina Margaret Williams
Alexandria Christian Upchurch	5 Nov 1983	Female	Moore	Donald Gene Upchurch	Rosa Jeannette Stone
Amber Lynn Upchurch	20 Jul 1988		Moore	Steven Frederick Upchurch	Freida Freeman
Tory Kwame Rayshawe Upchurch	3 Nov 1989		Moore	Not Stated	Felicia Cordelia Rosetta Gardn
William Lawrence Upchurch	2 May 1990		Moore	Larry Vernon Upchurch	Nina Margaret Williams
Johnny Austin Upchurch	7 Jun 1998	Male	Moore	Johnny Newland Upchurch	Melissa Ann Mccaskill